

**BALDOR • RELIANCE**

---

# Customer information packet

## VJPFPM3314T-2/4

15HP, 3480RPM, 3PH, 60HZ, 215JP, 3734M, OPSB, F

A

Class - None

Division - Not Applicable

## Specifications

Enclosure	OPSB
Frame	215JP
Frame Material	Steel
Frequency	60.00 Hz
Haz Area Class and Group	None
Haz Area Division	Not Applicable
Motor Letter Type	Three Phase
Output @ Frequency	15.000 HP @ 60 HZ
Phase	3
Synchronous Speed @ Frequency	3600 RPM @ 60 HZ
Voltage @ Frequency	200.0 V @ 60 HZ 400.0 V @ 60 HZ
Agency Approvals	UL CSA EEV
Ambient Temperature	40 °C
Auxiliary Box	NO AUXILLARY BOX
Auxiliary Box Lead Termination	None
Base Indicator	No Mounting
Bearing Grease Type	Polyrex EM (-20F +300F)
Blower	None
Current @ Voltage	20.400 A @ 400.0 V 40.800 A @ 200.0 V
Design Code	B
Drip Cover	Drip Cover
Duty Rating	CONT
Efficiency @ 100% Load	89.5 %
Electrically Isolated Bearing	Not Electrically Isolated
Feedback Device	NO FEEDBACK
Front Face Code	Drip Cover Mounting
Front Shaft Indicator	None
Heater Indicator	No Heater
High Voltage Full Load Amps	20.4 a

## Part detail

Revision	J
Type	AC
Mech. spec.	37N800
Base	
Status	PRD/A
Elec. spec.	37WGR916
Layout	37LYN800
Eff. date	01-02-2026
CD Diagram	CD0005
Poles	02
Leads	9#12
Proprietary	False
Created date	01-12-2016

Insulation Class	F
Inverter Code	Not Inverter
KVA Code	G
Lifting Lugs	Vertical Lifting Lugs
Locked Bearing Indicator	Locked Bearing
Motor Lead Exit	Ko Box
Motor Lead Quantity/Wire Size	9 @ 12 AWG
Motor Lead Termination	Flying Leads
Motor Standards	NEMA
Motor Type	3734M
Mounting Arrangement	F1
Number of Poles	2
Overall Length	24.41 IN
Power Factor	88
Product Family	General Purpose
Pulley End Bearing Type	Ball
Pulley Face Code	C-Face
Pulley Shaft Indicator	Tapped & Key
Rodent Screen	None
RoHS Status	ROHS COMPLIANT
Service Factor	1.15
Shaft Diameter	1.250 IN
Shaft Extension Location	Pulley End
Shaft Ground Indicator	No Shaft Grounding
Shaft Rotation	Reversible
Shaft Slinger Indicator	Shaft Slinger
Speed	3480 rpm
Speed Code	Single Speed
Starting Method	Direct on line
Thermal Device - Bearing	None
Thermal Device - Winding	None
Vibration Sensor Indicator	No Vibration Sensor
Winding Thermal 1	None
Winding Thermal 2	None

**Nameplate**

**NP3454L**

<b>CAT.NO.</b>	VJPFPM3314T-2/4	<b>CUST P/N</b>		<b>I.P.</b>	23
<b>SPEC.</b>	37N800R916H1	<b>SER.NO.</b>		<b>FRAME</b>	215JP
<b>HZ</b>	60	<b>HP</b>	15	<b>RPM</b>	3480
<b>VOLTS</b>	200/400	<b>CODE</b>	G	<b>VOLTS</b>	
<b>AMPS</b>	40.8/20.4	<b>DES</b>	B	<b>AMPS</b>	
<b>EFF</b>	89.5	<b>SER.F.</b>	1.15	<b>PF</b>	88
<b>RATING</b>	40C AMB-CONT	<b>DE BRG</b>	6309	<b>GREASE</b>	POLYREX EM
<b>BLANK</b>		<b>ODE BRG</b>	6206	<b>MTR. WT.</b>	131
		<b>CLASS</b>	F	<b>PH</b>	3
		<b>ENCL</b>	OPSB	<b>CC</b>	010A
<b>HTR-VOLTS</b>		<b>HTR-AMPS</b>		<b>HTR-WATTS</b>	

## Parts list

Part number	Description	Quantity
SA313563	SA 37N800R916H1	1.000 ea
RA301028	RA 37N800R916H1	1.000 ea
37CB3006	37 CB CASTING W/1.38 LEAD HOLE @ 6:00	1.000 ea
51XW2520A10	.25-20 X .62, TAPTITE II, HEX WSHR SLTD	2.000 ea
11XW1032G06	10-32 X .38, TAPTITE II, HEX WSHR SLTD U	1.000 ea
37EP3203D02	D00 W/AXIAL FAN MTG	1.000 ea
HW4500A01	1641B(ALEMITE)400 UNIV, GREASE FITT	1.000 ea
HW4500A17	317400 ALEMITE GREASE RELIEF	1.000 ea
HW5100A06	W2420-025 WVY WSHR (WB)	1.000 ea
37EP3401A46	PUEP OPEN 309 BRG W/BAFFLE, GRS, REL, MF	1.000 ea
HW4500A01	1641B(ALEMITE)400 UNIV, GREASE FITT	1.000 ea
HW4500A17	317400 ALEMITE GREASE RELIEF	1.000 ea
10XN2520A36	1/4-20X 2 1/4 HEX HD X	4.000 ea
HW1001A25	LOCKWASHER 1/4, ZINC PLT .493 OD, .255 I	4.000 ea
37AD2000A02	BAFFLE PLATE, STAMPED PLATED	1.000 ea
60XW0632A06	6-32 X 3/8 TORX HEAD SCREW TAPTITE II	4.000 ea
XY3118A12	5/16-18 HEX NUT DIRECTIONAL SERRATION	4.000 ea
39FH4500A09	39 FRAME DRIP COVER FOR 36 FRAME OPSB MO	1.000 ea
HA1040A03	UNICORP #1725M09F162520 SPACER FOR FAN C	3.000 ea
10XN2520A08	1/4-20X1/2 HEX HEAD CAP	3.000 ea
37CB4516	LIPPED LID FOR 37 FRAME NEC KOBX	1.000 ea
51XW0832A07	8-32 X .44, TAPTITE II, HEX WSHR SLTD SE	4.000 ea
HW4600B67	V-RING SLINGER 1.770 X 2.170 X .28 VITON	1.000 ea
HW2501E21	KEY, 1/4 SQ X 2.375	1.000 ea
HA7000A02	KEY RETAINER RING, 1 1/8 DIA, 1 3/8 DIA	1.000 ea
85XU0407S04	4X1/4 U DRIVE PIN STAINLESS	4.000 ea
LB1182	WARNING LABEL FOR MOTORS WITH EYENUTS	1.000 ea
MJ1000A02	GREASE, POLYREX EM EXXON	0.050 lb
MG1025R44	WILKOFAS, 784.109, CARMINE RED #3002	0.028 ga
37AD2001C01	BAFFLE PLATE, PLASTIC 1.56" WIDTH	1.000 ea
HA3104A35	THRUBOLT .31-18 X 13.687	4.000 ea

LC0005	CONN.DIA.,TY M,9-LD,DUAL VOLT,REVERSING	1.000 ea
NP3454L	ALUM FIRE PUMP MOTOR(LEGACY/BALDOR ONLY)	1.000 ea
37PA1039	PALLET PACK GROUP, BLANK PK1148	1.000 ea
LB1624	COMBINED WARNING LABEL, ISO/ANSI PICTOGR	1.000 ea
PK3082	STYROFOAM CRADLE	1.000 ea
PK3085X	FOAM SHAFT SUPPORT PRECUT 4-1/4 X 6-3/4	1.000 ea
MN416A01	TAG-INSTAL-MAINT no wire (2500 bx)11/22	1.000 ea

**AC Induction Motor Performance Data**

Record # 54855

Typical performance - not guaranteed values

<b>Winding:</b> 37WGR916-R001		<b>Type:</b> 3734M		<b>Enclosure:</b> OPSB	
<b>Nameplate Data</b>			<b>400 V, 60 Hz: High Voltage Connection</b>		
<b>Rated Output (HP)</b>	15	<b>Full Load Torque</b>	22.7 LB-FT		
<b>Volts</b>	200/400	<b>Start Configuration</b>	direct on line		
<b>Full Load Amps</b>	40.8/20.4	<b>Breakdown Torque</b>	69.6 LB-FT		
<b>R.P.M.</b>	3480	<b>Pull-up Torque</b>	27.6 LB-FT		
<b>Hz</b>	60 <b>Phase</b>	3	<b>Locked-rotor Torque</b>	32.9 LB-FT	
<b>NEMA Design Code</b>	<b>B KVA Code</b>	G	<b>Starting Current</b>	126 A	
<b>Service Factor (S.F.)</b>	1.15	<b>No-load Current</b>	6.32 A		
<b>NEMA Nom. Eff.</b>	89.5 <b>Power Factor</b>	88	<b>Line-line Res. @ 25°C</b>	0.646 Ω	
<b>Rating - Duty</b>	40C AMB-CONT		<b>Temp. Rise @ Rated Load</b>	54°C	
<b>S.F. Amps</b>			<b>Temp. Rise @ S.F. Load</b>	68°C	
			<b>Locked-rotor Power Factor</b>	35.8	
			<b>Rotor inertia</b>	0.31 LB-FT <sup>2</sup>	

**Load Characteristics 400 V, 60 Hz, 15 HP**

<b>% of Rated Load</b>	<b>25</b>	<b>50</b>	<b>75</b>	<b>100</b>	<b>125</b>	<b>150</b>	<b>S.F.</b>
<b>Power Factor</b>	59	79	85	89	90	90	90
<b>Efficiency</b>	89.8	91.6	91.8	90.2	88.1	86	88.9
<b>Speed</b>	3574	3546	3518	3484	3444	3400	3460
<b>Line amperes</b>	7.95	11.4	15.5	20.3	25.7	31.4	23.5

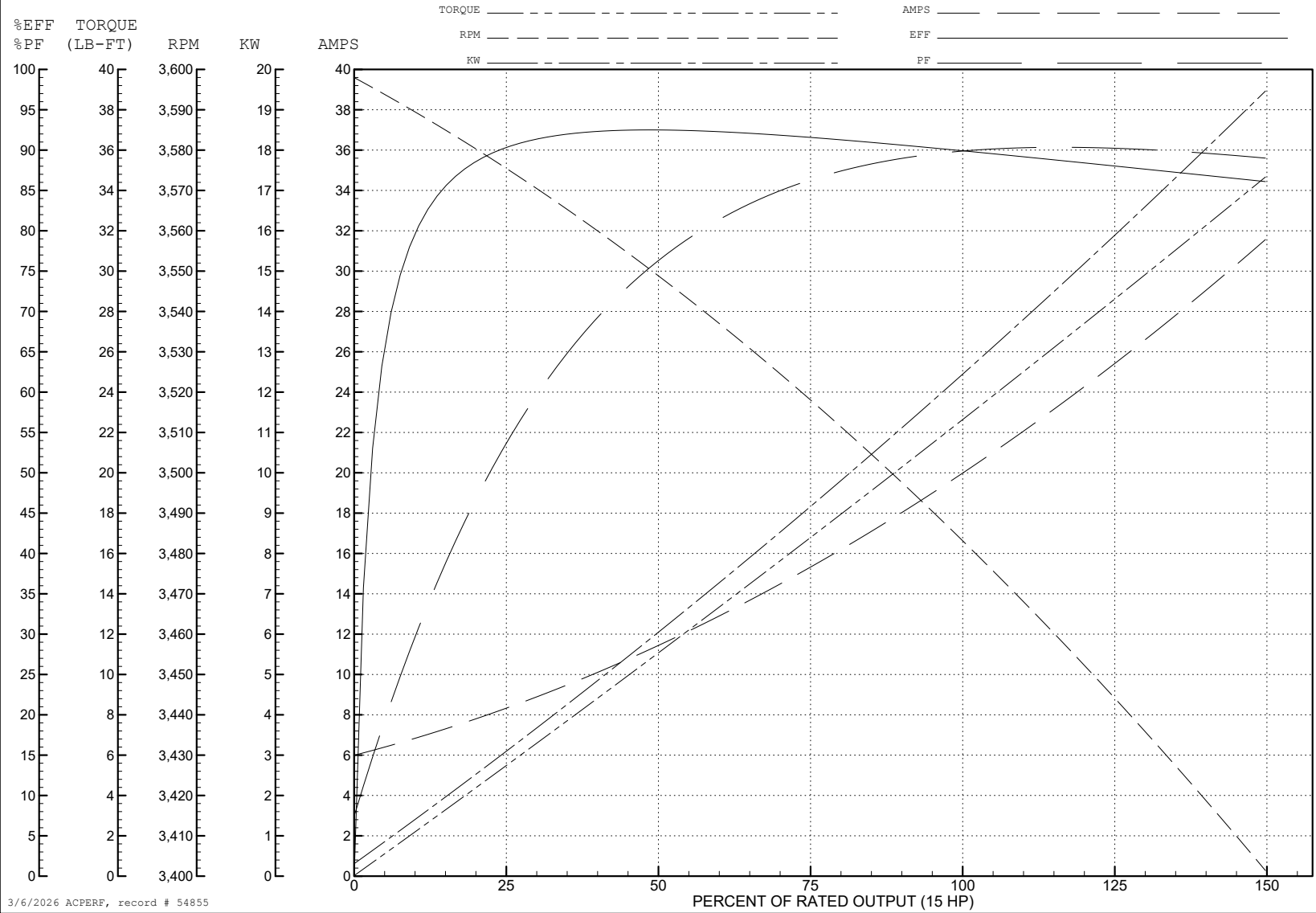
ABB Motors and Mechanical Inc.

WINDING # 37WGR916

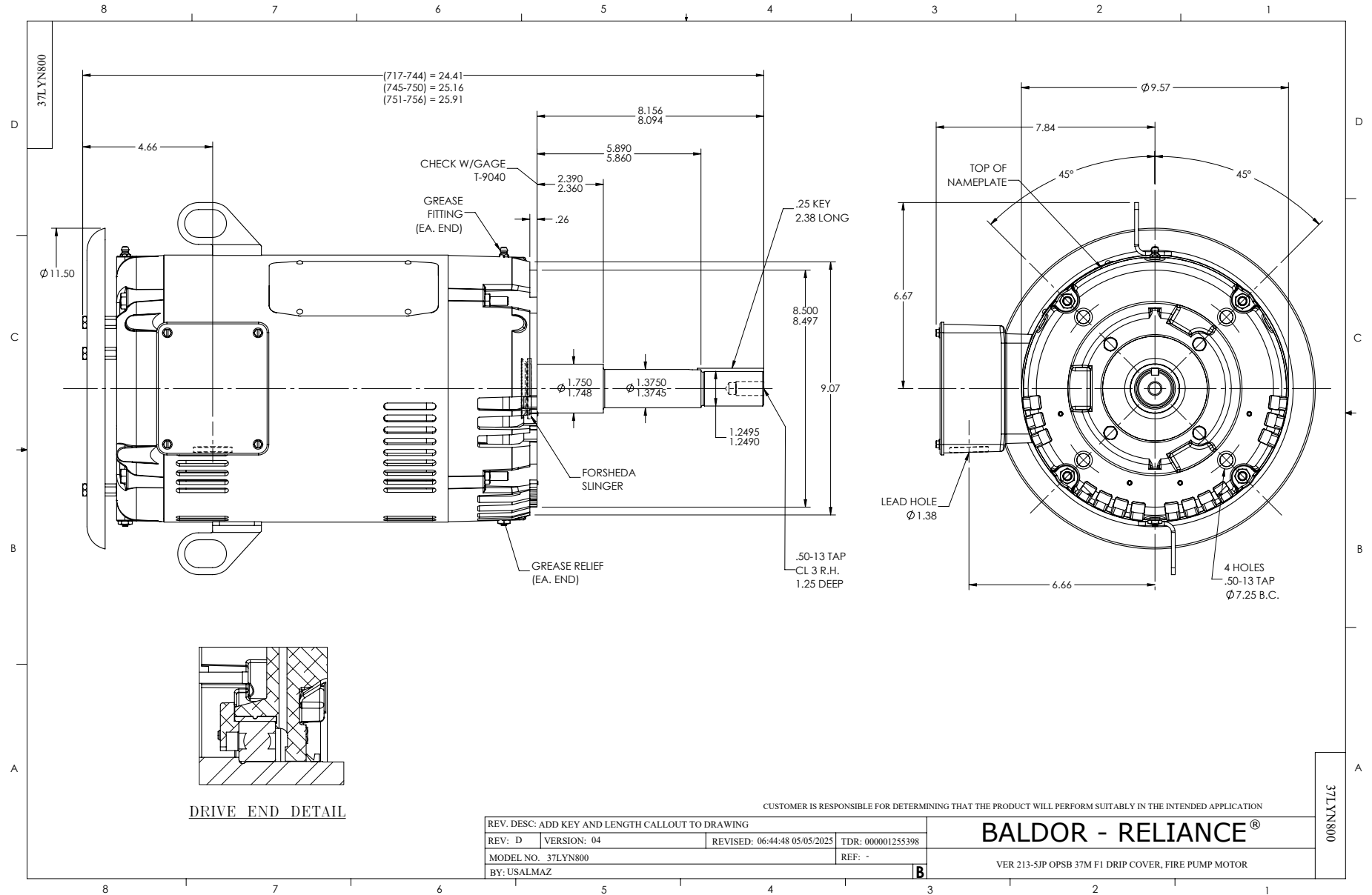
Typical performance - not guaranteed values.

15 HP 3 PH 60 HZ 3480 RPM 400 V 3734M

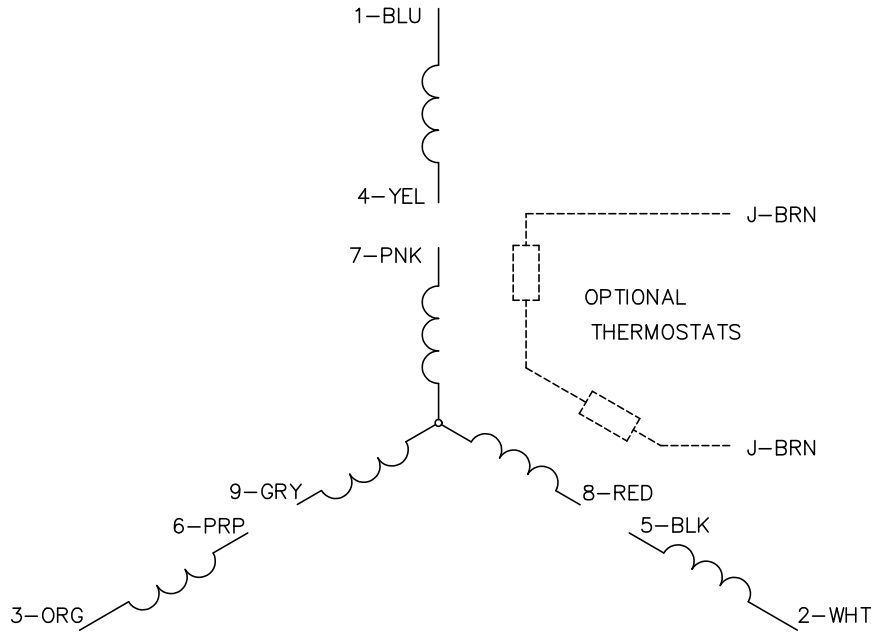
TORQUES (LB-FT): PO=69.6 PU=27.6 LR=32.9 LRA=126



3/6/2026 ACPERF, record # 54855



CD0005

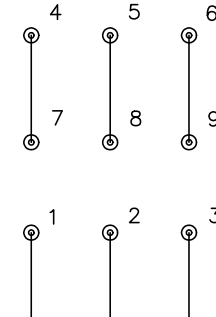


LOW VOLTAGE  
(2Y)



LINE

HIGH VOLTAGE  
(1Y)



LINE

**NOTES:**

1. INTERCHANGE ANY TWO LINE LEADS TO REVERSE ROTATION.
2. OPTIONAL THERMOSTATS ARE PROVIDED WHEN SPECIFIED.
3. ACTUAL NUMBER OF INTERNAL PARALLEL CIRCUITS MAY BE A MULTIPLE OF THOSE SHOWN ABOVE.
4. LEAD COLORS ARE OPTIONAL. LEADS MUST ALWAYS BE NUMBERED AS SHOWN.

CD0005

REV. DESC: REVISE TO SHOW OPTIONAL COLORS			
REV. LTR: E	BY: JLP	REVISED: 01/19/99 10:15	TDR: 0171435
S00000		FILE: AAA00005140	MDL: -
		MTL: -	

**BALDOR ELECTRIC Co.**

3PH, DV, 9 LEADS