

BALDOR • RELIANCE

Customer information packet

VJPFPM2549T-2/4

75HP, 3535RPM, 3PH, 60HZ, 364JP, 4250M, OPSB, F
A

Specifications

Enclosure	OPSB
Frame	364JP
Frame Material	Steel
Frequency	60.00 Hz
Motor Letter Type	Three Phase
Output @ Frequency	75.000 HP @ 60 HZ
Phase	3
Synchronous Speed @ Frequency	3600 RPM @ 60 HZ
Voltage @ Frequency	200.0 V @ 60 HZ 400.0 V @ 60 HZ
Agency Approvals	CSA EEV UL
Ambient Temperature	40 °C
Auxiliary Box	NO AUXILLARY BOX
Auxiliary Box Lead Termination	None
Base Indicator	No Mounting
Bearing Grease Type	Polyrex EM (-20F +300F)
Blower	None
Current @ Voltage	192.000 A @ 200.0 V 96.000 A @ 400.0 V
Design Code	B
Drip Cover	Drip Cover
Duty Rating	CONT
Efficiency @ 100% Load	93.0 %
Electrically Isolated Bearing	Not Electrically Isolated
Feedback Device	NO FEEDBACK
Front Face Code	Standard
Front Shaft Indicator	None
Heater Indicator	No Heater
High Voltage Full Load Amps	96.0 a
Insulation Class	F
Inverter Code	Not Inverter

Part detail

Revision	F
Type	AC
Mech. spec.	42E361
Base	
Status	PRD/A
Elec. spec.	42WGW982
Layout	42LYE361
Eff. date	10-31-2024
CD Diagram	CD0104
Poles	02
Leads	12#6
Proprietary	False
Created date	03-20-2017

KVA Code	F
Lifting Lugs	Vertical Lifting Lugs
Locked Bearing Indicator	Locked Bearing
Motor Lead Exit	Ko Box
Motor Lead Quantity/Wire Size	12 @ 6 AWG
Motor Lead Termination	Flying Leads
Motor Standards	NEMA
Motor Type	4250M
Mounting Arrangement	F1
Number of Poles	2
Overall Length	32.50 IN
Power Factor	90
Product Family	Fire Pump Motor
Pulley End Bearing Type	Ball
Pulley Face Code	C-Face
Pulley Shaft Indicator	Tapped & Key
Rodent Screen	Included
Service Factor	1.15
Shaft Diameter	2.125 IN
Shaft Extension Location	Pulley End
Shaft Ground Indicator	No Shaft Grounding
Shaft Rotation	Reversible
Shaft Slinger Indicator	Shaft Slinger
Speed	3535 rpm
Speed Code	Single Speed
Starting Method	Wye Start - Delta Run
Thermal Device - Bearing	None
Thermal Device - Winding	None
Vibration Sensor Indicator	No Vibration Sensor
Winding Thermal 1	None
Winding Thermal 2	None

Nameplate

NP3454L

CAT.NO.	VJPFPM2549T-2/4	CUST P/N		I.P.	23
SPEC.	42E361W982H2	SER.NO.		FRAME	364JP
HZ	60	HP	75	RPM	3535
VOLTS	200/400	CODE	F	VOLTS	
AMPS	192/96	DES	B	AMPS	
EFF	93	SER.F.	1.15	PF	90
RATING	40C AMB-CONT	DE BRG	6313	GREASE	POLYREX EM
BLANK		ODE BRG	6311	MTR. WT.	472
		CLASS	F	PH	3
		ENCL	OPSB	CC	010A
HTR-VOLTS		HTR-AMPS		HTR-WATTS	

Parts list

Part number	Description	Quantity
SA336197	SA 42E361W982H2	1.000 ea
RA324430	RA 42E361W982H2	1.000 ea
HA6360	LIFTING LUG FOR 42 FRAME MOTORS.	2.000 ea
HA6017	CAST ADAPTER, 40,42 KOBX	1.000 ea
19XW3118A12	.31-18 X .75 HEX WASHER HEAD TAPTITE II	2.000 ea
HW1001A31	LOCKWASHER 5/16, ZINC PLT.591 OD, .319 I	2.000 ea
12CB1002A48	CONDUIT BOX, W/3.62 DIA. LEAD HOLE	1.000 ea
19XW3118A16	.31-18 HEX WASHER HEAD TAPTITE II 1.00 L	4.000 ea
HW1001A31	LOCKWASHER 5/16, ZINC PLT.591 OD, .319 I	4.000 ea
WD1000B53	TERMINAL BURNDY KPA34	1.000 ea
10XN5013K10	1/2-13 X .625 HEX HD, GRADE 5	1.000 ea
HW1001A50	LOCKWASHER 1/2, ZINC PLT,.879 OD, .509 I	1.000 ea
42EP3200A02	FR ENDPLATE, MACH	1.000 ea
HA1108A01	RODENT SCREEN	1.000 ea
51XW1032A06	10-32 X .38, TAPTITE II, HEX WSHR SLTD S	4.000 ea
HW5100A13	W4627-047 WVY WSHR	1.000 ea
42EP1400A03	PU ENDPLATE, MACH W/ RODENT SCREENS	1.000 ea
HA1165A02	RODENT SCREEN FOR 42 PU. C-FACE E.P.	1.000 ea
51XW1032A06	10-32 X .38, TAPTITE II, HEX WSHR SLTD S	1.000 ea
10XN3816K56	3/8-16 X 3 1/2 HEX HEAD MACHINE SCREW,	4.000 ea
HW1001A38	LOCKWASHER 3/8, ZINC PLT .688 OD, .382 I	4.000 ea
HA7204	"L" SHAPE LIFTING LUG FOR 42 FRAME MOTOR	2.000 ea
XY5013A12	NUT,1/2-13,HEX,STEEL,ZINCPLATED	8.000 ea
42FH2500A01	DRIP COVER MOD 42 OPEN	1.000 ea
10XN2520K12	1/4-20 X.75 GRD 5	4.000 ea
HW1001A25	LOCKWASHER 1/4, ZINC PLT .493 OD, .255 I	4.000 ea
18CB1501A01	CONDUIT BOX LID, MODEL 318 OPEN	1.000 ea
10XN3118K16	5/16-18 X 1' GRADE #5, STL, ZINC PLATE	4.000 ea
HW1001A31	LOCKWASHER 5/16, ZINC PLT.591 OD, .319 I	4.000 ea
HW4600B82	V-RING SLINGER 2.500 X 2.900 X .28 VITON	1.000 ea
HW2501G18	SQUARE STEEL KEY .375 X 2.00 LONG	1.000 ea

LB1182	WARNING LABEL FOR MOTORS WITH EYENUTS	1.000 ea
HA4051A00	PLASTIC CAP FOR GREASE FITTING	1.000 ea
HW4500A03	GREASE FITTING, .125 NPT 1610(ALEMITE) 8	1.000 ea
HW4500A17	317400 ALEMITE GREASE RELIEF	1.000 ea
MJ1000A02	GREASE, POLYREX EM EXXON	0.030 lb
HA4051A00	PLASTIC CAP FOR GREASE FITTING	1.000 ea
HW4500A03	GREASE FITTING, .125 NPT 1610(ALEMITE) 8	1.000 ea
HW4500A17	317400 ALEMITE GREASE RELIEF	1.000 ea
MG1025R44	WILKOFAS, 784.109, CARMINE RED #3002	0.050 ga
85XU0407S04	4X1/4 U DRIVE PIN STAINLESS	4.000 ea
HA3151A07	THRUBOLT STUD 1/2-13 X 20.000	4.000 ea
42AD2001C01	BAFFLE PLATE 42 OPEN, SLOTTED BAND MTRS	1.000 ea
LB1624	COMBINED WARNING LABEL, ISO/ANSI PICTOGR	1.000 ea
42AD2001C01	BAFFLE PLATE 42 OPEN, SLOTTED BAND MTRS	1.000 ea
LC0104A01	CONNECTION DIAGRAM	1.000 ea
NP3454L	ALUM FIRE PUMP MOTOR(LEGACY/BALDOR ONLY)	1.000 ea
44PA2000	PKGP, CTN ID 42X34X25, STD BASE	1.000 ea
MN416A01	TAG-INSTAL-MAINT no wire (2500 bx)11/22	1.000 ea

AC Induction Motor Performance Data

Record # 54842

Typical performance - not guaranteed values

Winding: 42WGW982-R001		Type: 4250M		Enclosure: OPSB	
Nameplate Data			400 V, 60 Hz: High Voltage Connection		
Rated Output (HP)	75	Full Load Torque	112 LB-FT		
Volts	200/400	Start Configuration	direct on line		
Full Load Amps	192/96	Breakdown Torque	381 LB-FT		
R.P.M.	3535	Pull-up Torque	111 LB-FT		
Hz	60	Locked-rotor Torque	148 LB-FT		
NEMA Design Code	B	Starting Current	585 A		
Service Factor (S.F.)	1.15	No-load Current	22.7 A		
NEMA Nom. Eff.	93	Line-line Res. @ 25°C	0.0688 Ω		
Rating - Duty	40C AMB-CONT	Temp. Rise @ Rated Load	41°C		
S.F. Amps		Temp. Rise @ S.F. Load	51°C		
		Locked-rotor Power Factor	21.1		
		Rotor inertia	3.91 LB-FT ²		

Load Characteristics 400 V, 60 Hz, 75 HP

% of Rated Load	25	50	75	100	125	150	S.F.
Power Factor	67	84	89	90	90	89	90
Efficiency	92.4	94.6	94.4	94	93	91.3	93.4
Speed	3585	3572	3556	3539	3518	3496	3526
Line amperes	32.5	51	72.4	96.4	122	149	112

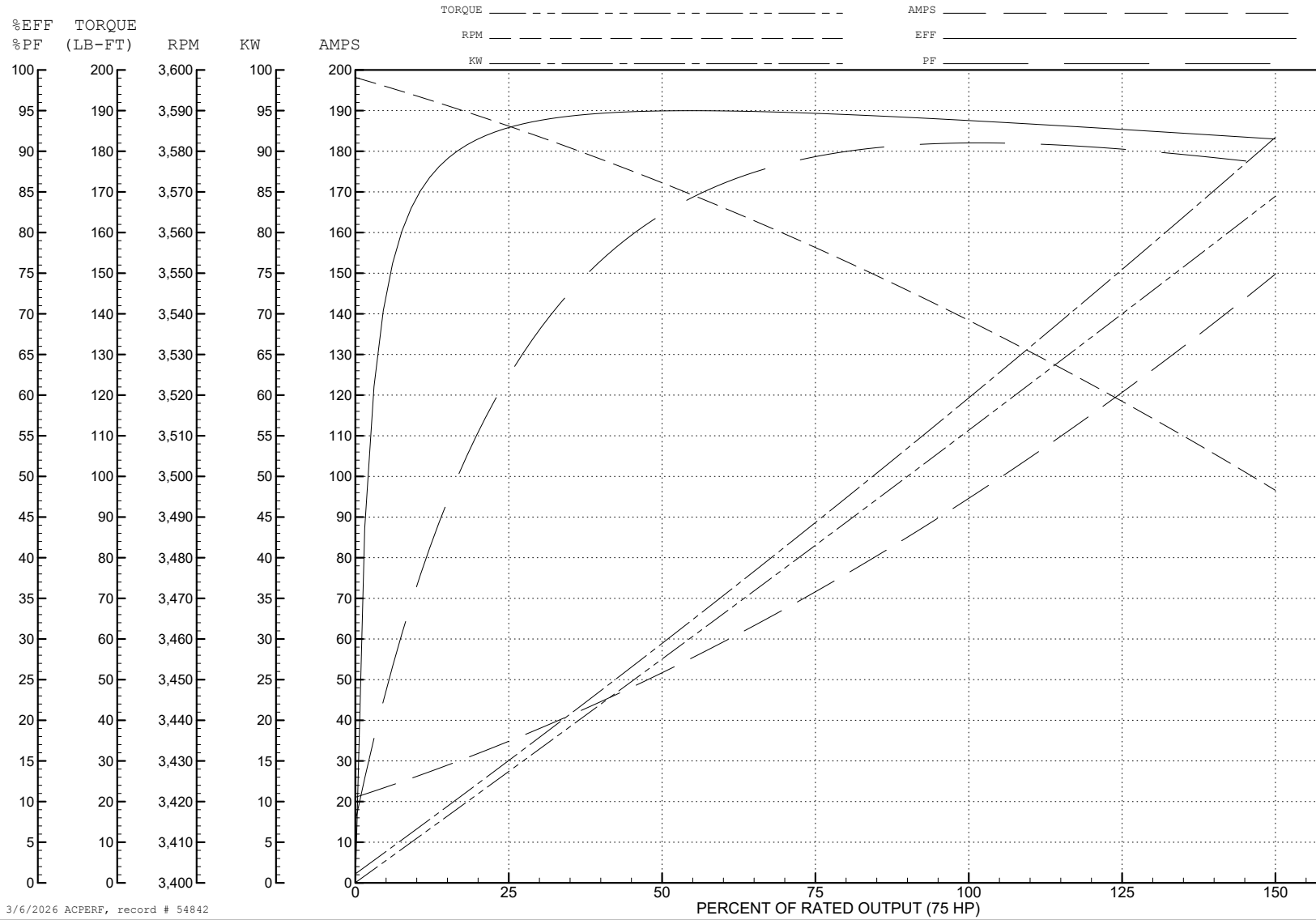
ABB Motors and Mechanical Inc.

WINDING # 42WGW982

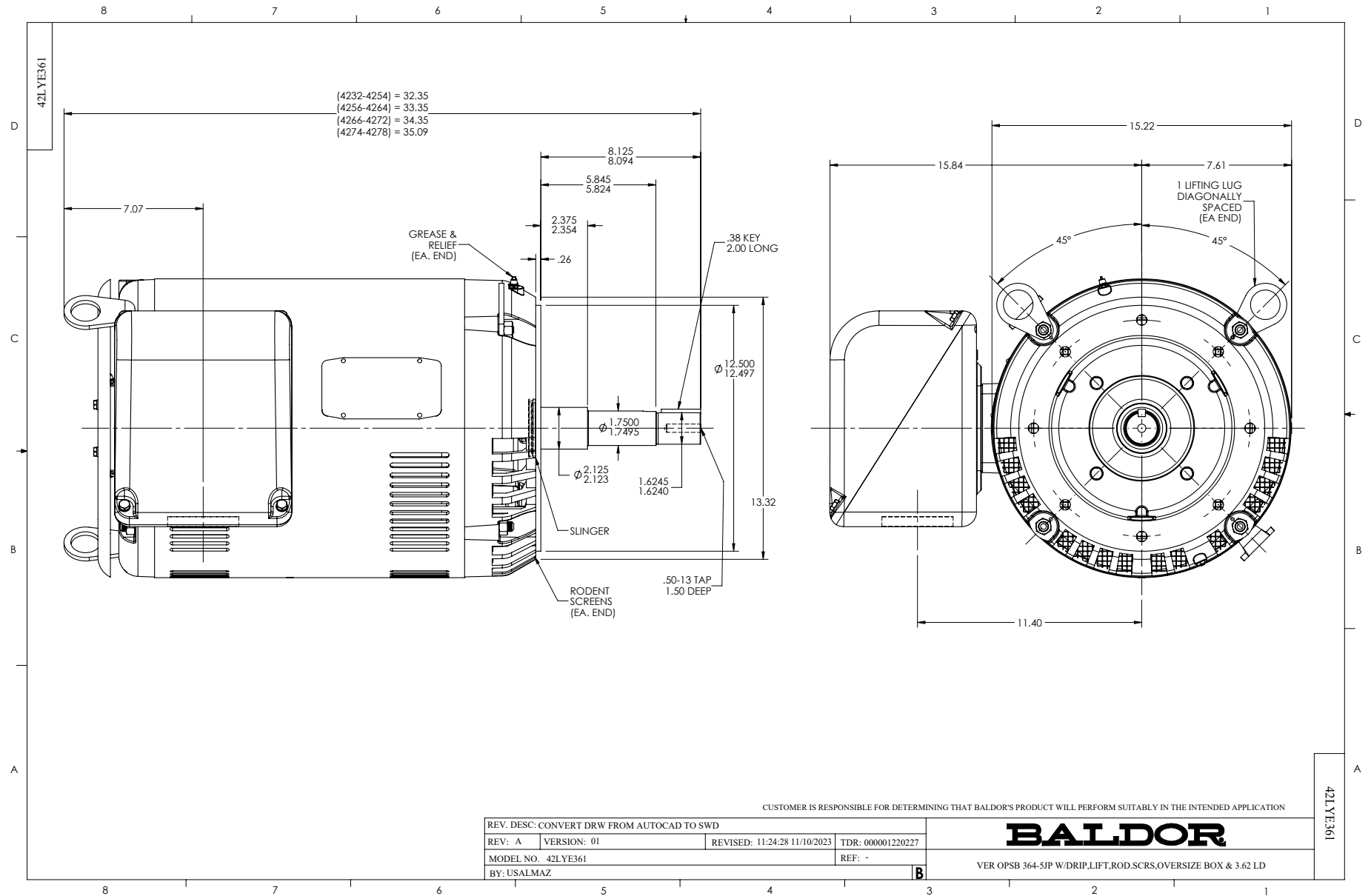
Typical performance - not guaranteed values.

75 HP 3 PH 60 HZ 3535 RPM 400 V 4250M

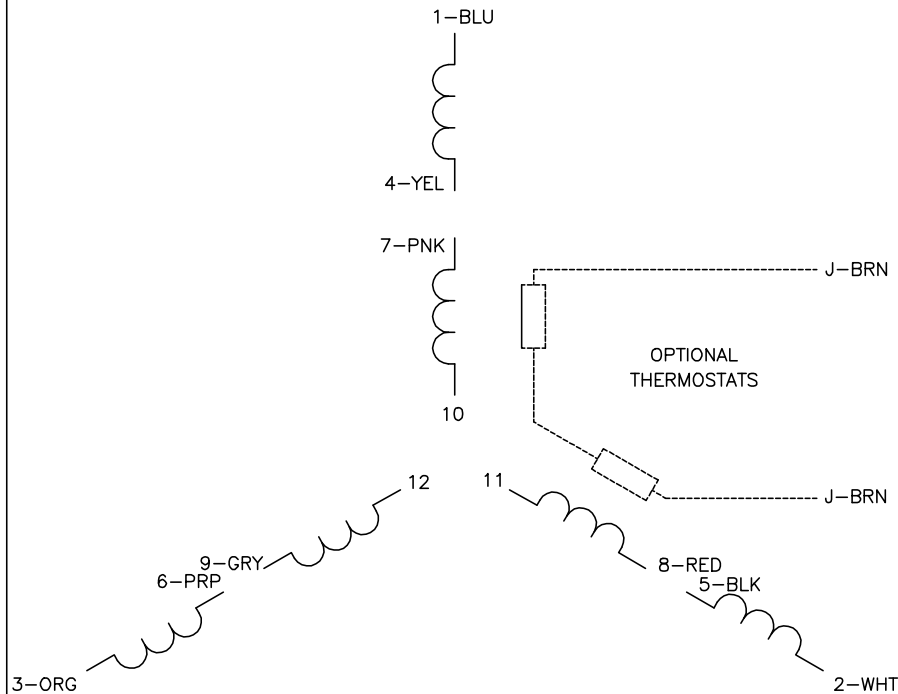
TORQUES (LB-FT): PO=381 PU=111 LR=148 LRA=585



3/6/2026 ACPERF, record # 54842

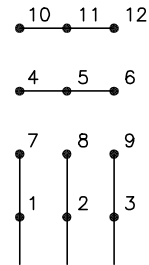


CD0104



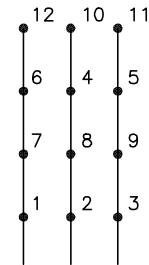
LOW VOLTAGE

START (2Y)



LINE

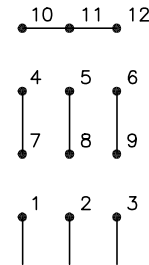
RUN (2D)



LINE

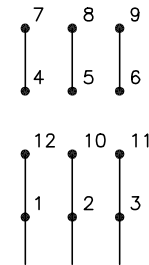
HIGH VOLTAGE

START (1Y)



LINE

RUN (1D)



LINE

NOTES:

1. INTERCHANGE ANY TWO LINE LEADS TO REVERSE ROTATION.
2. OPTIONAL THERMOSTATS ARE PROVIDED WHEN SPECIFIED.
3. ACTUAL NUMBER OF INTERNAL PARALLEL CIRCUITS MAY BE A MULTIPLE OF THOSE SHOWN ABOVE.
4. LEAD COLORS ARE OPTIONAL. LEADS MUST ALWAYS BE NUMBERED AS SHOWN.

CD0104

REV. DESC: ADD CLASS CONN00000007		
REV. LTR: D	VERSION: 01	TDR: 000001099922
FILE: \AAA\00008\377	REVISED: 09:02:55 02/19/2019	BY: ENBRIRO
MTL: -	© □	

BALDOR - RELIANCE®

3PH, DV, 12 LEADS, Y START/D RUN

SH 1 of 1