

BALDOR • RELIANCE

Customer information packet

VJPFPM2534T-2/4

30HP, 3510RPM, 3PH, 60HZ, 284JP, 3936M, OPSB, F

A

Class -

Division - Not Applicable

Specifications

Enclosure	OPSB
Frame	284JP
Frame Material	Steel
Frequency	60.00 Hz
Haz Area Division	Not Applicable
Motor Letter Type	Three Phase
Output @ Frequency	30.000 HP @ 60 HZ
Phase	3
Synchronous Speed @ Frequency	3600 RPM @ 60 HZ
Voltage @ Frequency	400.0 V @ 60 HZ 200.0 V @ 60 HZ
Agency Approvals	CSA EEV UL
Ambient Temperature	40 °C
Auxiliary Box	NO AUXILLARY BOX
Auxiliary Box Lead Termination	None
Base Indicator	No Mounting
Bearing Grease Type	Polyrex EM (-20F +300F)
Blower	None
Current @ Voltage	40.000 A @ 400.0 V 80.000 A @ 200.0 V
Design Code	B
Drip Cover	Drip Cover
Duty Rating	CONT
Efficiency @ 100% Load	91.0 %
Electrically Isolated Bearing	Not Electrically Isolated
Feedback Device	NO FEEDBACK
Front Face Code	Drip Cover Mounting
Front Shaft Indicator	None
Heater Indicator	No Heater
High Voltage Full Load Amps	40.0 a
Insulation Class	F

Part detail

Revision	T
Type	AC
Mech. spec.	39T043
Base	
Status	PRD/A
Elec. spec.	39WGX943
Layout	39LYT043
Eff. date	06-26-2024
CD Diagram	CD0104
Poles	02
Leads	12#10
Proprietary	False
Created date	01-11-2016

Inverter Code	Not Inverter
KVA Code	G
Lifting Lugs	Vertical Lifting Lugs
Locked Bearing Indicator	Locked Bearing
Motor Lead Exit	Ko Box
Motor Lead Quantity/Wire Size	12 @ 10 AWG
Motor Lead Termination	Flying Leads
Motor Standards	NEMA
Motor Type	3936M
Mounting Arrangement	F1
Number of Poles	2
Overall Length	29.23 IN
Power Factor	89
Product Family	Fire Pump Motor
Pulley End Bearing Type	Ball
Pulley Face Code	C-Face
Pulley Shaft Indicator	Tapped & Key
Rodent Screen	Included
Service Factor	1.15
Shaft Diameter	1.750 IN
Shaft Extension Location	Pulley End
Shaft Ground Indicator	No Shaft Grounding
Shaft Rotation	Reversible
Shaft Slinger Indicator	Shaft Slinger
Speed	3510 rpm
Speed Code	Single Speed
Starting Method	Wye Start - Delta Run
Thermal Device - Bearing	None
Thermal Device - Winding	None
Vibration Sensor Indicator	No Vibration Sensor

Nameplate

NP3454L

CAT.NO.	VJPFPM2534T-2/4	CUST P/N		I.P.	23
SPEC.	39T043X943H2	SER.NO.		FRAME	284JP
HZ	60	HP	30	RPM	3510
VOLTS	200/400	CODE	G	VOLTS	
AMPS	80/40	DES	B	AMPS	
EFF	91	SER.F.	1.15	PF	89
RATING	40C AMB-CONT	DE BRG	6312	GREASE	POLYREX EM
BLANK		ODE BRG	6208	MTR. WT.	277
		CLASS	F	PH	3
		ENCL	OPSB	CC	010A
HTR-VOLTS		HTR-AMPS		HTR-WATTS	

Parts list

Part number	Description	Quantity
SA313334	SA 39T043X943H2	1.000 ea
RA300791	RA 39T043X943H2	1.000 ea
HW3201A01	1/2-13 EYEBOLT	1.000 ea
09CB2800A01	ADAPTER MACH FOR 09CB3000 AND 10CB3000	1.000 ea
19XW3118A08	.31-18 X .50 HEX WASHER HEAD TAPTITE II	2.000 ea
HW1001A31	LOCKWASHER 5/16, ZINC PLT.591 OD, .319 I	2.000 ea
HW4600B41	V-RING SLINGER 2.125 X 2.880 X 0.280	1.000 ea
WD1000B25	GND LUG, BURNDY L125HP OR T&B L125HP-BB	1.000 ea
19XW3118G08	.31-18X.50,HEX WSHR HD,TAPTITE 2,GREEN	1.000 ea
10CB3000SP	KOBX, CAST W/2.00 LEAD HOLE	1.000 ea
19XW3118A12	.31-18 X .75 HEX WASHER HEAD TAPTITE II	4.000 ea
39EP3200A02	FR E P, MACH - DR CVR MTG	1.000 ea
HW5100A08	W3118-035 WVY WSHR (WB)	1.000 ea
HA1101A03	RODENT SCREEN, 39 FACE MTD.E.P.	1.000 ea
51XW1032A06	10-32 X .38, TAPTITE II, HEX WSHR SLTD S	4.000 ea
39EP1404A11	PUEP MACH, 284-6TC OPEN, RODENT SCREEN	1.000 ea
HA1101A06	RODENT SCREEN FOR 39EP1404	1.000 ea
51XW1032A06	10-32 X .38, TAPTITE II, HEX WSHR SLTD S	6.000 ea
10XN3118K40	5/16-18 X 2.50" HEX HD, GRADE 5	4.000 ea
HW1001A31	LOCKWASHER 5/16, ZINC PLT.591 OD, .319 I	4.000 ea
HW1001A31	LOCKWASHER 5/16, ZINC PLT.591 OD, .319 I	4.000 ea
80XN1032J06	10-32 X 3/8 SET SCREW, HEX SOC, CUP PT	1.000 ea
HW1001A38	LOCKWASHER 3/8, ZINC PLT .688 OD, .382 I	4.000 ea
HA7205	"L" SHAPE LIFTING LUG FOR 37,39 & 40 FRA	2.000 ea
39FH4500A01	DRIP COVER, STAMPED	1.000 ea
10XN2520K16	1/4-20 X 1" HX HD SCRW GRADE 5, ZINC P	2.000 ea
HA2001B08	SPL SPACER FOR AIR DEFLECTOR .50 O.D. X	2.000 ea
10CB3500SP	CONDUIT BOX LID, CAST	1.000 ea
51XW2520A12	.25-20 X .75, TAPTITE II, HEX WSHR SLTD	4.000 ea
HW2501E18	KEY, 1/4 SQ X 2.000	1.000 ea
LB1182	WARNING LABEL FOR MOTORS WITH EYENUTS	2.000 ea

PK6016	BASELESS FOOT BRACKET FOR 39 & 40 FRAME	3.000 ea
10XN6311K16	5/8-11 X 1.00 HEX HD CAP SCREW, GRADE 5	2.000 ea
HW1000N63	5/8 FLAT NYLON WASHER,OD=1.0,ID=.75,W=.0	2.000 ea
HW4500A03	GREASE FITTING, .125 NPT 1610(ALEMITE) 8	1.000 ea
HW4500A20	1/8NPT SL PIPE PLUG	1.000 ea
HA4051A00	PLASTIC CAP FOR GREASE FITTING	1.000 ea
HA3113A04	3/8-16 X 15.50 THRU BOLT	3.000 ea
HA31A1	.38-16 THRU BOLT 15.50 W/STUD .38-16 X.63	1.000 ea
MJ1000A02	GREASE, POLYREX EM EXXON	0.030 lb
HW4500A03	GREASE FITTING, .125 NPT 1610(ALEMITE) 8	1.000 ea
HW4500A20	1/8NPT SL PIPE PLUG	1.000 ea
HA4051A00	PLASTIC CAP FOR GREASE FITTING	1.000 ea
MG1025R44	WILKOFAS, 784.109, CARMINE RED #3002	0.050 ga
85XU0407S04	4X1/4 U DRIVE PIN STAINLESS	2.000 ea
39AD2002B01	BAFFLE PLATE 39 OPEN, SLOTTED BAND MTRS	1.000 ea
LB1624	COMBINED WARNING LABEL, ISO/ANSI PICTOGR	1.000 ea
39AD2002B01	BAFFLE PLATE 39 OPEN, SLOTTED BAND MTRS	1.000 ea
LC0104A01	CONNECTION DIAGRAM	1.000 ea
NP3454L	ALUM FIRE PUMP MOTOR(LEGACY/BALDOR ONLY)	1.000 ea
39PA1017	PACKAGING GP TALL CENTERED 09 CRATE	1.000 ea
LD7020D12	LEAD SET, 12AWG, 12 LEAD, 20" LONG LEADS	1.000 ea

AC Induction Motor Performance Data

Record # 54831

Typical performance - not guaranteed values

Winding: 39WGX943-R001		Type: 3936M	Enclosure: OPSB	
Nameplate Data			400 V, 60 Hz: High Voltage Connection	
Rated Output (HP)	30	Full Load Torque	44.9 LB-FT	
Volts	200/400	Start Configuration	direct on line	
Full Load Amps	80/40	Breakdown Torque	157 LB-FT	
R.P.M.	3510	Pull-up Torque	48 LB-FT	
Hz	60 Phase	3	Locked-rotor Torque	67.8 LB-FT
NEMA Design Code	B KVA Code	G	Starting Current	248 A
Service Factor (S.F.)		1.15	No-load Current	12 A
NEMA Nom. Eff.	91 Power Factor	89	Line-line Res. @ 25°C	0.287 Ω
Rating - Duty		40C AMB-CONT	Temp. Rise @ Rated Load	37°C
S.F. Amps			Temp. Rise @ S.F. Load	46°C
			Locked-rotor Power Factor	30.4
			Rotor inertia	0.92 LB-FT ²

Load Characteristics 400 V, 60 Hz, 30 HP

% of Rated Load	25	50	75	100	125	150	S.F.
Power Factor	61	81	87	89	89	88	89
Efficiency	89.3	92.1	92.4	91.5	90.2	88.5	90.7
Speed	3578	3556	3533	3509	3482	3451	3493
Line amperes	15.1	21.9	30.4	39.6	49.7	61.1	45.7

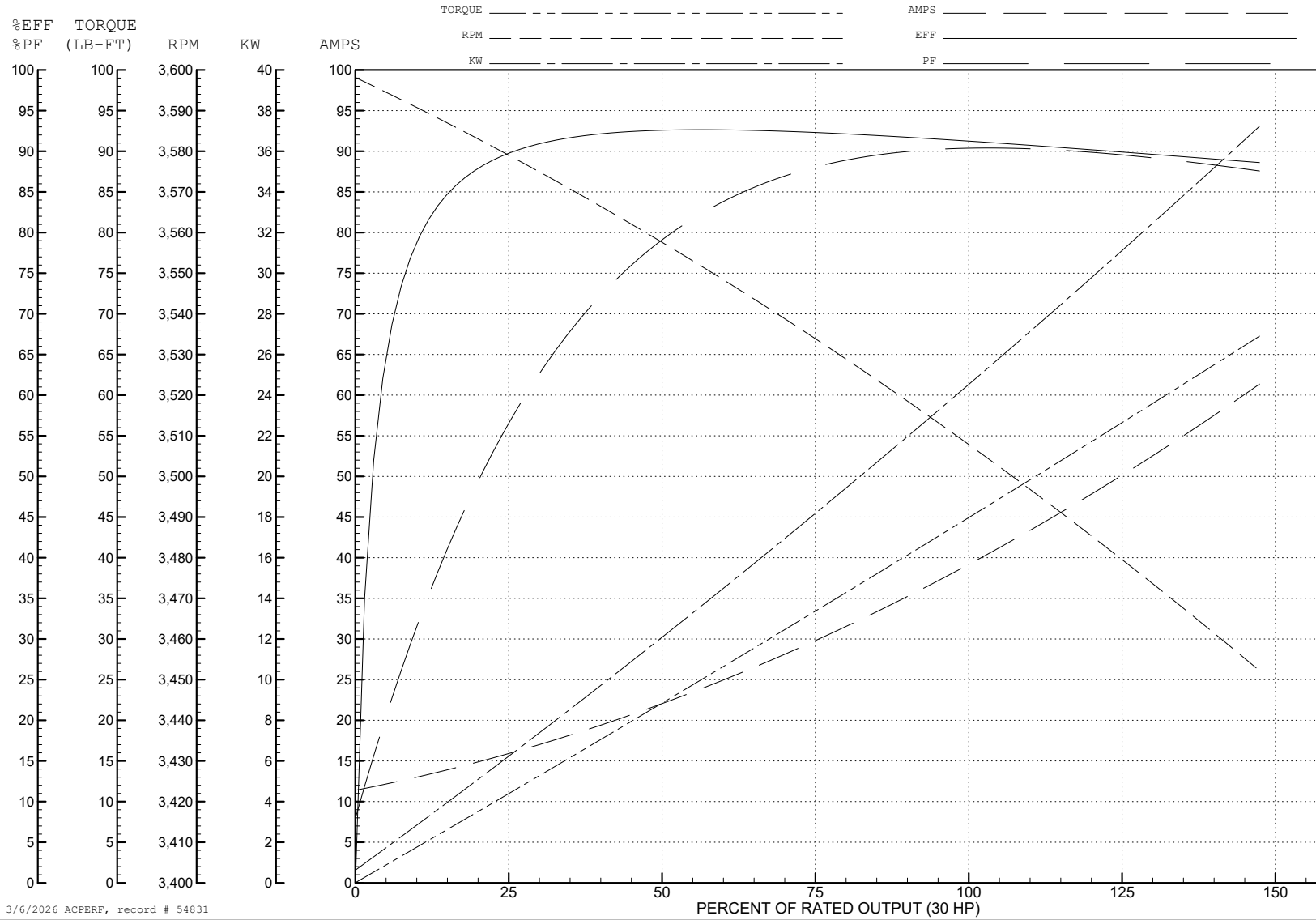
ABB Motors and Mechanical Inc.

WINDING # 39WGX943

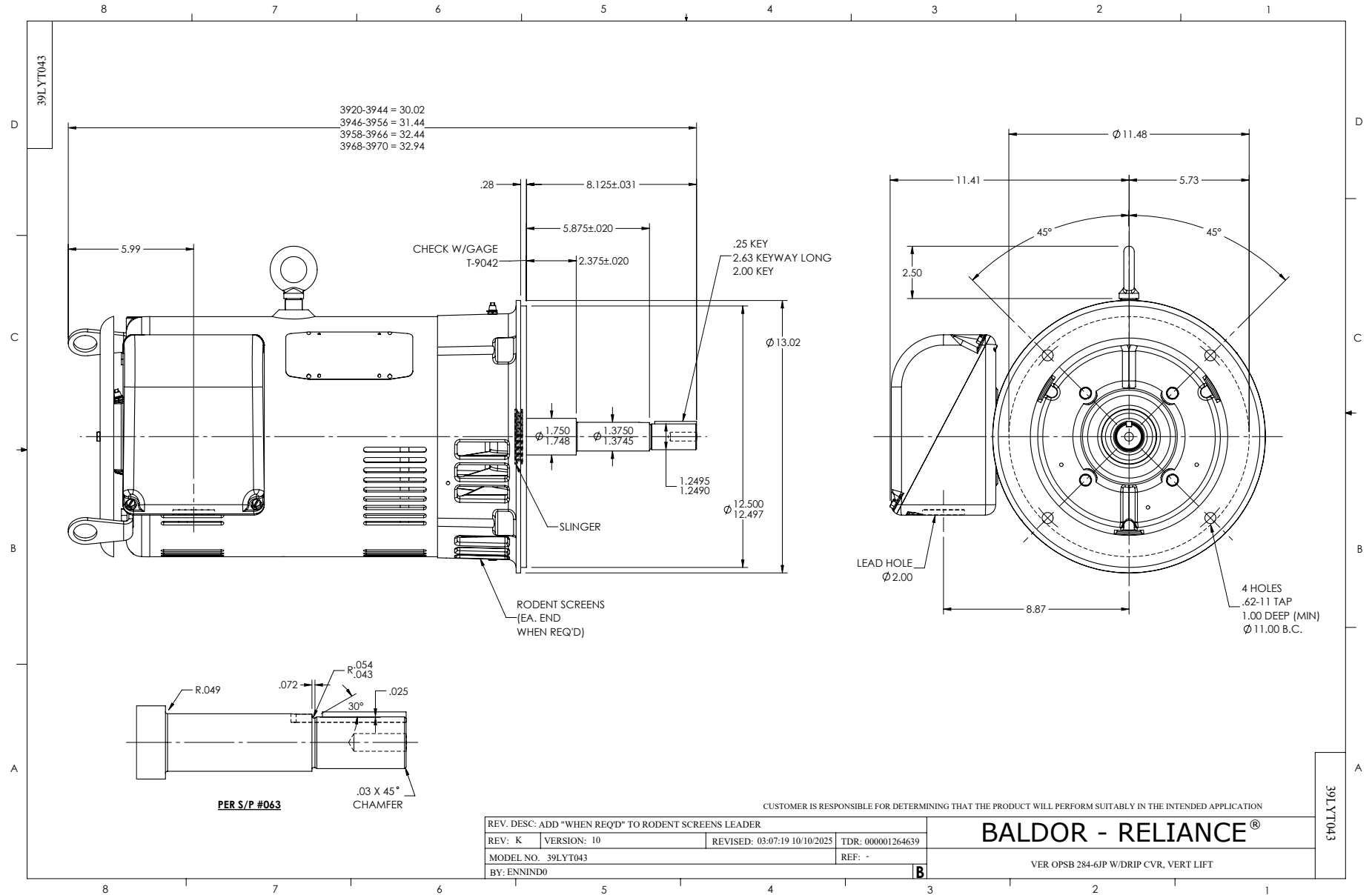
30 HP 3 PH 60 HZ 3510 RPM 400 V 3936M

Typical performance - not guaranteed values.

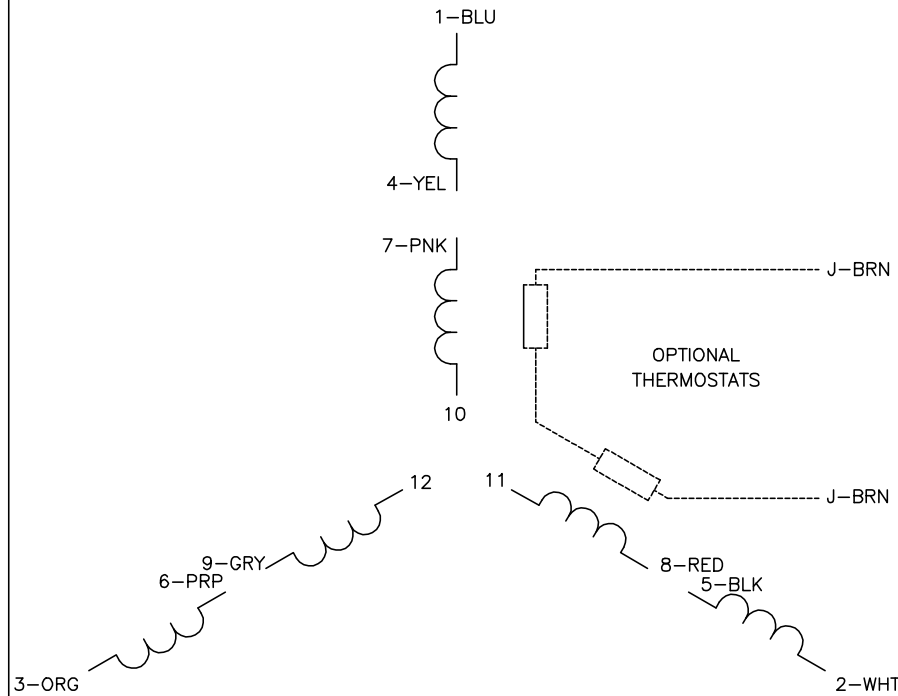
TORQUES (LB-FT): PO=157 PU=48 LR=67.8 LRA=248



3/6/2026 ACPERF, record # 54831

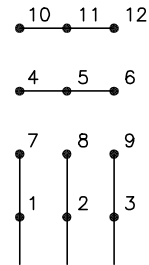


CD0104



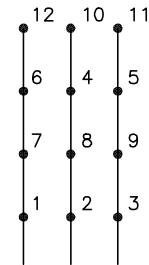
LOW VOLTAGE

START (2Y)



LINE

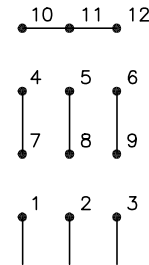
RUN (2D)



LINE

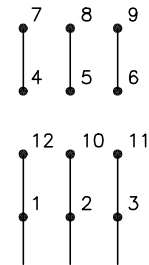
HIGH VOLTAGE

START (1Y)



LINE

RUN (1D)



LINE

NOTES:

1. INTERCHANGE ANY TWO LINE LEADS TO REVERSE ROTATION.
2. OPTIONAL THERMOSTATS ARE PROVIDED WHEN SPECIFIED.
3. ACTUAL NUMBER OF INTERNAL PARALLEL CIRCUITS MAY BE A MULTIPLE OF THOSE SHOWN ABOVE.
4. LEAD COLORS ARE OPTIONAL. LEADS MUST ALWAYS BE NUMBERED AS SHOWN.

CD0104

REV. DESC: ADD CLASS CONN00000007		
REV. LTR: D	VERSION: 01	TDR: 000001099922
FILE: \AAA\00008\377	REVISED: 09:02:55 02/19/2019	BY: ENBRIRO
MTL: -	© □	

BALDOR - RELIANCE®

3PH, DV, 12 LEADS, Y START/D RUN

SH 1 of 1