

BALDOR • RELIANCE

Customer information packet

RL1310A

1HP, 1725RPM, 1PH, 60HZ, 56H, 3520L, OPEN, F1, N

Class - None

Division - Not Applicable

Specifications

Enclosure	OPEN
Frame	56H
Frame Material	Steel
Frequency	60.00 Hz
Haz Area Class and Group	None
Haz Area Division	Not Applicable
Motor Letter Type	Cap Start, Induction Run
Output @ Frequency	1.000 HP @ 60 HZ
Phase	1
Synchronous Speed @ Frequency	1800 RPM @ 60 HZ
Voltage @ Frequency	115.0 V @ 60 HZ 230.0 V @ 60 HZ
Agency Approvals	C UR US
Ambient Temperature	40 °C
Auxiliary Box	NO AUXILLARY BOX
Auxiliary Box Lead Termination	None
Base Indicator	Resilient
Bearing Grease Type	Polyrex EM (-20F +300F)
Blower	None
Current @ Voltage	13.000 A @ 115.0 V 6.500 A @ 230.0 V
Design Code	N
Drip Cover	No Drip Cover
Duty Rating	CONT
Efficiency @ 100% Load	66.0 %
Electrically Isolated Bearing	Not Electrically Isolated
Feedback Device	NO FEEDBACK
Front Shaft Indicator	None
Heater Indicator	No Heater
High Voltage Full Load Amps	6.5 a
Insulation Class	F
Inverter Code	Not Inverter

Part detail

Revision	A
Type	AC
Mech. spec.	35F391
Base	
Status	PRD/A
Elec. spec.	35WGK600
Layout	35LYF391
Eff. date	03-18-2025
CD Diagram	CD0052
Poles	04
Leads	6#18,1#14 #1TH
Proprietary	False
Created date	01-14-2025

KVA Code	H
Lifting Lugs	No Lifting Lugs
Locked Bearing Indicator	No Locked Bearing
Motor Lead Quantity/Wire Size	6 @ 18 AWG
Motor Lead Termination	Flying Leads
Motor Standards	NEMA
Motor Type	3520L
Mounting Arrangement	F1
Number of Poles	4
Overall Length	11.42 IN
Power Factor	73
Product Family	General Purpose
Pulley End Bearing Type	Ball
Pulley Face Code	Resilient Mount
Pulley Shaft Indicator	Standard
Rodent Screen	None
RoHS Status	ROHS COMPLIANT
Service Factor	1.15
Shaft Diameter	0.625 IN
Shaft Ground Indicator	No Shaft Grounding
Shaft Rotation	Reversible
Shaft Slinger Indicator	No Slinger
Speed	1725 rpm
Speed Code	Single Speed
Starting Method	Direct on line
Thermal Device - Bearing	None
Thermal Device - Winding	None
Vibration Sensor Indicator	No Vibration Sensor
Winding Thermal 1	Automatic Thermal Overload
Winding Thermal 1 Location	ES
Winding Thermal 2	None

Nameplate

NP1257L									
CAT.NO.	RL1310A								
SPEC.	35F391K600G1								
HP	1								
VOLTS	115/230								
AMP	13/6.5								
RPM	1725								
FRAME	56H			HZ	60		PH	1	
SER.F.	1.15	CODE	H	DES	N	CL	F		
NEMA-NOM-EFF	66	PF	73						
RATING	40C AMB-CONT								
CC									
DE	6203	ODE	6203						
ENCL	OPEN	SN							

AC Induction Motor Performance Data

Record # 111272

Typical performance - not guaranteed values

Winding: 35WGK600-R001		Type: 3520L	Enclosure: OPSB	
Nameplate Data			115 V, 60 Hz: Low Voltage Connection	
Rated Output (HP)	1	Full Load Torque	3.049 LB-FT	
Volts	115/230	Start Configuration	direct on line	
Full Load Amps	13/6.5	Breakdown Torque	7.38 LB-FT	
R.P.M.	1725	Pull-up Torque	6.33 LB-FT	
Hz	60 Phase	1	Locked-rotor Torque	7.09 LB-FT
NEMA Design Code	N KVA Code	H	Starting Current	60.4 A
Service Factor (S.F.)		1.15	No-load Current	9.82 A
NEMA Nom. Eff.	66 Power Factor	73	Line-line Res. @ 25°C	0.78284 Ω A Ph 1.9 Ω B Ph
Rating - Duty		40C AMB-CONT	Temp. Rise @ Rated Load	48°C
S.F. Amps			Temp. Rise @ S.F. Load	58°C

Load Characteristics 115 V, 60 Hz, 1 HP

% of Rated Load	25	50	75	100	125	150	S.F.
Power Factor	35	50	63	73	80	85	77
Efficiency	47.1	62	67.1	68.2	66.5	62.6	67.2
Speed	1780.6	1765.2	1748	1727.1	1696.7	1658.3	1709
Line amperes	9.9	10.4	11.5	13.1	15.3	18.5	14.4

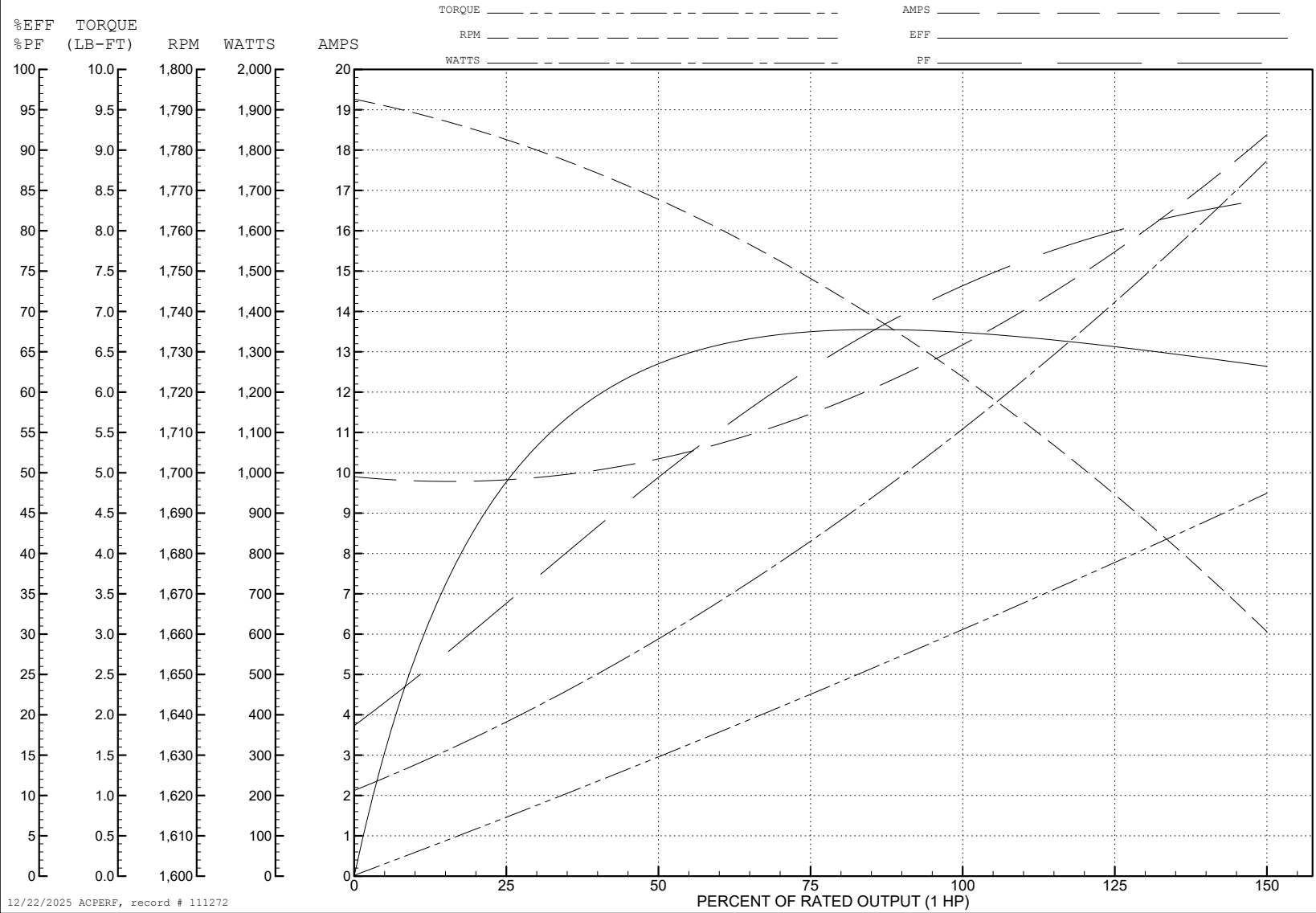
ABB Motors and Mechanical Inc.

WINDING # 35WGK600

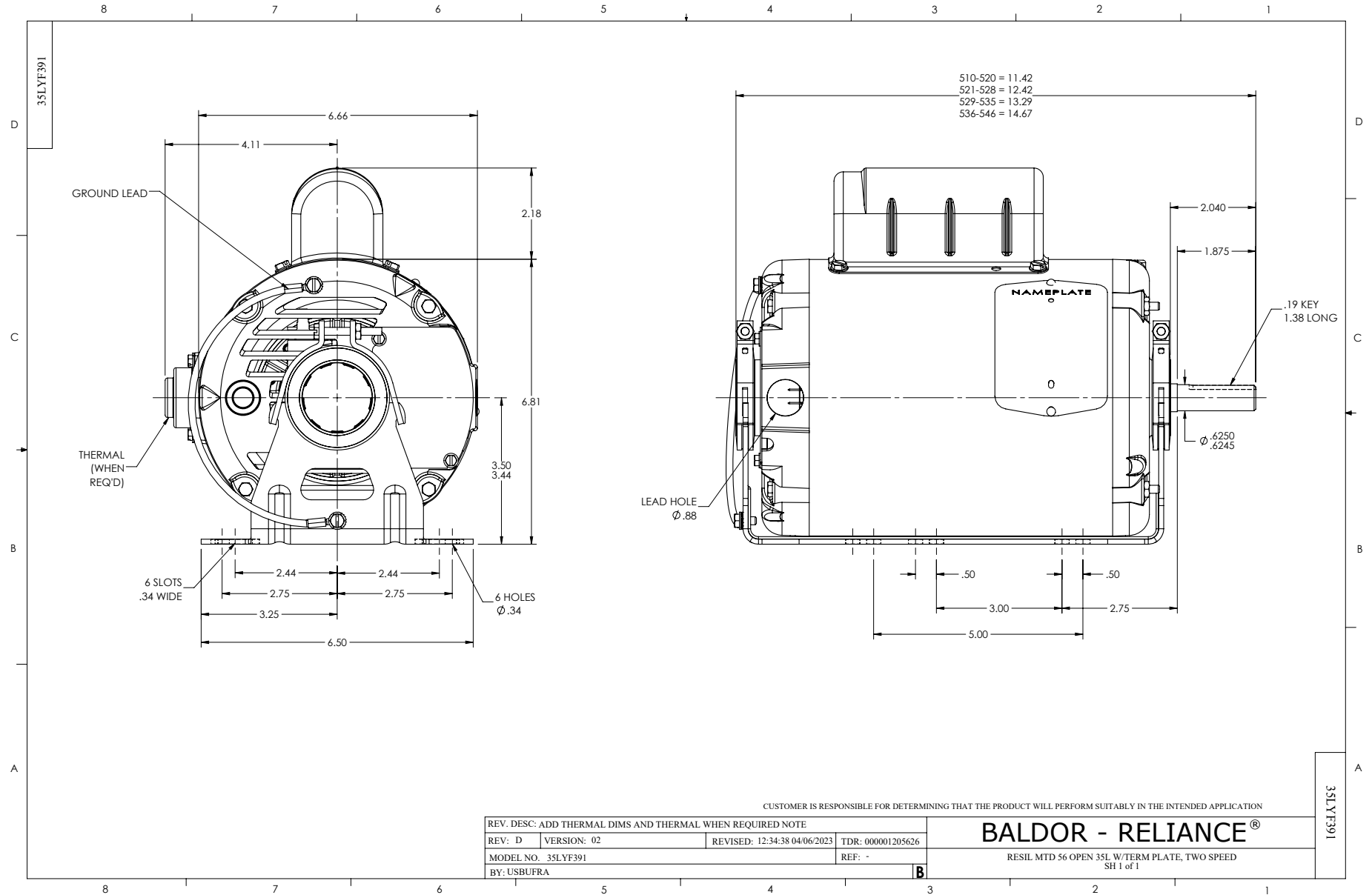
Typical performance - not guaranteed values.

1 HP 1 PH 60 HZ 1725 RPM 115 V 3520L

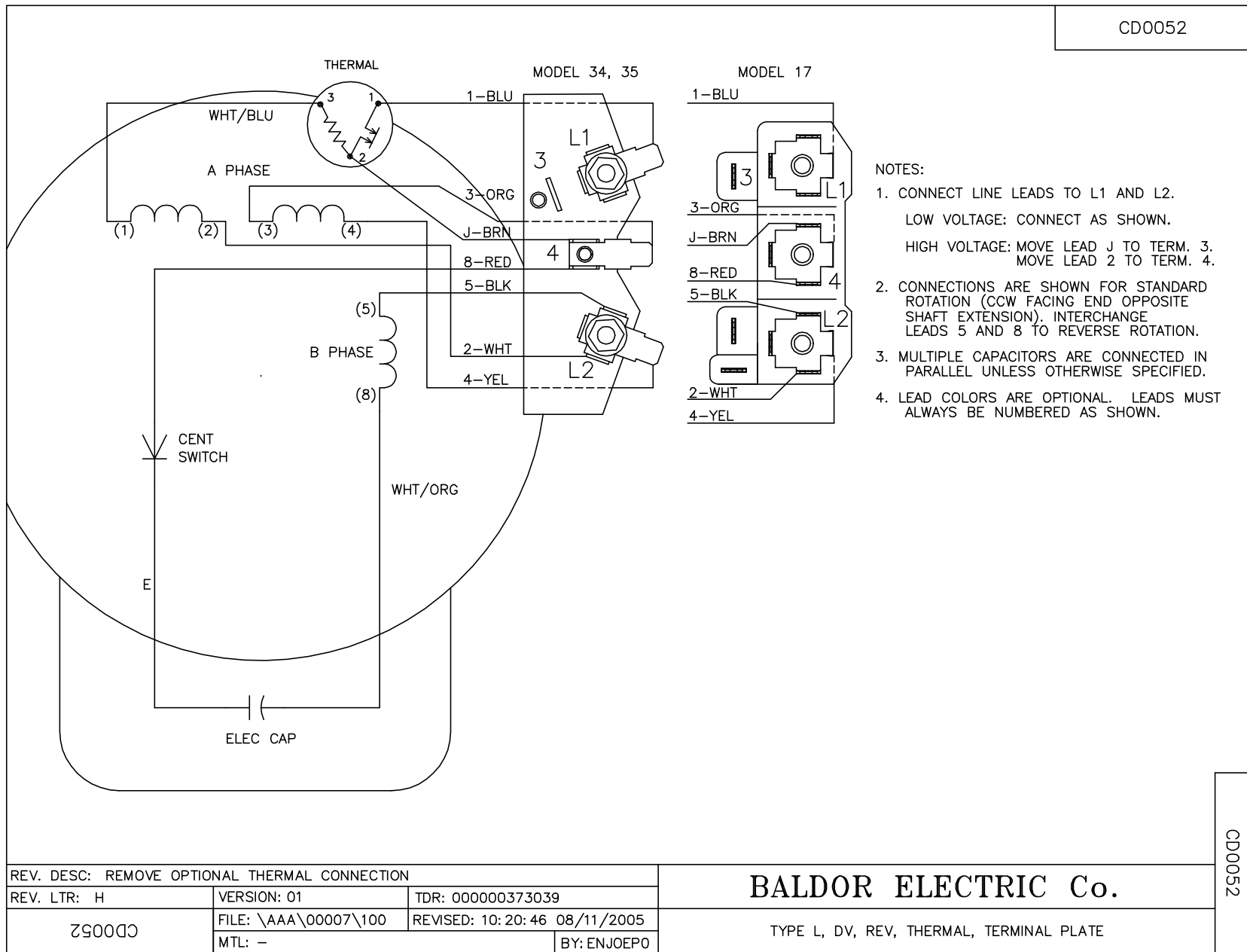
TORQUES (LB-FT): PO=7.38 PU=6.33 LR=7.09 LRA=60.4



12/22/2025 ACPERF, record # 111272



CD0052



REV. DESC: REMOVE OPTIONAL THERMAL CONNECTION		
REV. LTR: H	VERSION: 01	TDR: 000000373039
CD0052	FILE: \AAA\00007\100	REVISED: 10:20:46 08/11/2005
	MTL: -	BY: ENJOEPO

BALDOR ELECTRIC Co.

TYPE L, DV, REV, THERMAL, TERMINAL PLATE

CD0052