



---

# Customer information packet

## NM3454/35

.25HP, 1785RPM, 3PH, 60HZ, 56, 3512M, TENV, F1

A

Class - None

Division - Not Applicable

## Specifications

Enclosure	TENV
Frame	56
Frame Material	Steel
Frequency	60.00 Hz
Haz Area Class and Group	None
Haz Area Division	Not Applicable
Motor Letter Type	Three Phase
Output @ Frequency	.250 HP @ 60 HZ
Phase	3
Synchronous Speed @ Frequency	1800 RPM @ 60 HZ
Voltage @ Frequency	230.0 V @ 60 HZ 460.0 V @ 60 HZ
Agency Approvals	UR CSA
Ambient Temperature	40 °C
Auxiliary Box	NO AUXILLARY BOX
Auxiliary Box Lead Termination	None
Base Indicator	Rigid
Bearing Grease Type	Polyrex EM (-20F +300F)
Blower	None
Current @ Voltage	.800 A @ 460.0 V 1.600 A @ 230.0 V
Design Code	B
Drip Cover	No Drip Cover
Duty Rating	CONT
Efficiency @ 100% Load	70.0 %
Electrically Isolated Bearing	Not Electrically Isolated
Feedback Device	NO FEEDBACK
Front Shaft Indicator	None
Heater Indicator	No Heater
High Voltage Full Load Amps	0.8 a
Insulation Class	F

## Part detail

Revision	E
Type	AC
Mech. spec.	35A026
Base	
Status	PRD/A
Elec. spec.	35WGG155
Layout	35LYA026
Eff. date	01-12-2026
CD Diagram	CD0005
Poles	04
Leads	9#18
Proprietary	False
Created date	07-05-2022

<b>Inverter Code</b>	<b>Inverter Duty</b>
<b>KVA Code</b>	<b>U</b>
<b>Lifting Lugs</b>	<b>No Lifting Lugs</b>
<b>Locked Bearing Indicator</b>	<b>No Locked Bearing</b>
<b>Motor Lead Quantity/Wire Size</b>	<b>9 @ 18 AWG</b>
<b>Motor Lead Termination</b>	<b>Flying Leads</b>
<b>Motor Standards</b>	<b>NEMA</b>
<b>Motor Type</b>	<b>3512M</b>
<b>Mounting Arrangement</b>	<b>F1</b>
<b>Number of Poles</b>	<b>4</b>
<b>Overall Length</b>	<b>11.06 IN</b>
<b>Power Factor</b>	<b>42</b>
<b>Product Family</b>	<b>General Purpose</b>
<b>Pulley End Bearing Type</b>	<b>Ball</b>
<b>Pulley Face Code</b>	<b>Standard</b>
<b>Pulley Shaft Indicator</b>	<b>Standard</b>
<b>Rodent Screen</b>	<b>None</b>
<b>RoHS Status</b>	<b>ROHS COMPLIANT</b>
<b>Service Factor</b>	<b>1.15</b>
<b>Shaft Diameter</b>	<b>0.625 IN</b>
<b>Shaft Ground Indicator</b>	<b>No Shaft Grounding</b>
<b>Shaft Rotation</b>	<b>Reversible</b>
<b>Shaft Slinger Indicator</b>	<b>No Slinger</b>
<b>Speed</b>	<b>1785 rpm</b>
<b>Speed Code</b>	<b>Single Speed</b>
<b>Starting Method</b>	<b>Direct on line</b>
<b>Thermal Device - Bearing</b>	<b>None</b>
<b>Thermal Device - Winding</b>	<b>None</b>
<b>Vibration Sensor Indicator</b>	<b>No Vibration Sensor</b>
<b>Winding Thermal 1</b>	<b>None</b>
<b>Winding Thermal 2</b>	<b>None</b>

**Nameplate**

<b>NP1256L</b>									
<b>CAT.NO.</b>	NM3454/35								
<b>SPEC.</b>	35A026G155G2								
<b>HP</b>	.25								
<b>VOLTS</b>	230/460								
<b>AMP</b>	1.6/.8								
<b>RPM</b>	1785								
<b>FRAME</b>	56		<b>HZ</b>	60		<b>PH</b>	3		
<b>SER.F.</b>	1.15	<b>CODE</b>	U	<b>DES</b>	B	<b>CLASS</b>	F		
<b>NEMA-NOM-EFF</b>	70	<b>PF</b>	42						
<b>RATING</b>	40C AMB-CONT								
<b>CC</b>									
<b>DE</b>	6205		<b>ODE</b>	6203					
<b>ENCL</b>	TENV	<b>SN</b>							
	SFA 1.61/.81								

## Parts list

Part number	Description	Quantity
SA405528	SA 35A026G155G2	1.000 ea
RA396949	RA 35A026G155G2	1.000 ea
S/P111-000-002	CORONA TEST, SUPER E MOTORS - FT. SMITH	1.000 ea
NS2512A01	INSULATOR, CONDUIT BOX X	1.000 ea
35CB3007	35 CB CASTING W/.88 DIA. LEAD HOLE	1.000 ea
36GS1000SP	GASKET-CONDUIT BOX, .06 THICK #SV-330 LE	1.000 ea
51XB1016A07	10-16 X 7/16 HXWSSLD SERTYB	2.000 ea
11XW1032G06	10-32 X .38, TAPTITE II, HEX WSHR SLTD U	1.000 ea
35EP3122F00	MASTER ODE,203 BRG,#26 DRN	1.000 ea
HW5100A03	WAVY WASHER (W1543-017)	1.000 ea
35EP3123A00	MASTER DE,205 BRG,.998SH,#26 DRN	1.000 ea
XY1032A02	10-32 HEX NUT DIRECTIONAL SERRATION	4.000 ea
35CB4521GX	CONDUIT BOX LID KIT **ORDER INDIV PARTS	1.000 ea
51XW0832A07	8-32 X .44, TAPTITE II, HEX WSHR SLTD SE	4.000 ea
HW2501D13	KEY, 3/16 SQ X 1.375	1.000 ea
HA7000A04	KEY RETAINER 0.625 DIA SHAFTS	1.000 ea
85XU0407S04	4X1/4 U DRIVE PIN STAINLESS	2.000 ea
MJ1000A02	GREASE, POLYREX EM EXXON	0.050 lb
MG1050G01	CELEROL MEDIUM CHARCOAL METALLIC GRAY	0.017 ga
HA3100A15	THRUBOLT 10-32 X 8.375	4.000 ea
LB1624	COMBINED WARNING LABEL, ISO/ANSI PICTOGR	1.000 ea
LC0005	CONN.DIA.,TY M,9-LD,DUAL VOLT,REVERSING	1.000 ea
NP1256L	ALUM UL CC INDUSTRIAL MOTOR A60	1.000 ea
35PA1066	PKG GRP, PRINT PK1008A06	1.000 ea
MN416A01	TAG-INSTAL-MAINT no wire (2500 bx)11/22	1.000 ea
FE-0000001	ZRTG FE ASSEMBLY	1.000 ea
PE-0000001	ZRTG PE ASSEMBLY	1.000 ea

**AC Induction Motor Performance Data**

Record # 91140

Typical performance - not guaranteed values

Winding: 35WGG155-R061		Type: 3512M	Enclosure: TENV	
<b>Nameplate Data</b>			<b>460 V, 60 Hz: High Voltage Connection</b>	
Rated Output (HP)	.25	Full Load Torque	0.739 LB-FT	
Volts	230/460	Start Configuration	direct on line	
Full Load Amps	1.6/.8	Breakdown Torque	6.28 LB-FT	
R.P.M.	1785	Pull-up Torque	3.26 LB-FT	
Hz	60 Phase	3	Locked-rotor Torque	4.04 LB-FT
NEMA Design Code	B KVA Code	U	Starting Current	6.71 A
Service Factor (S.F.)		1.15	No-load Current	0.792 A
NEMA Nom. Eff.	70 Power Factor	42	Line-line Res. @ 25°C	43.2 Ω
Rating - Duty		40C AMB-CONT	Temp. Rise @ Rated Load	46°C
S.F. Amps			Temp. Rise @ S.F. Load	48°C
			Locked-rotor Power Factor	70.7767
			Rotor inertia	0.0866 lb-ft <sup>2</sup>

**Load Characteristics 460 V, 60 Hz, 0.25 HP**

% of Rated Load	25	50	75	100	125	150	S.F.
Power Factor	19	27	34	41	49	55	46
Efficiency	40.8	57	65.8	71.2	74.5	76.7	73.2
Speed	1795	1791	1787	1784	1779	1775	1781
Line amperes	0.782	0.78	0.787	0.796	0.813	0.843	0.806

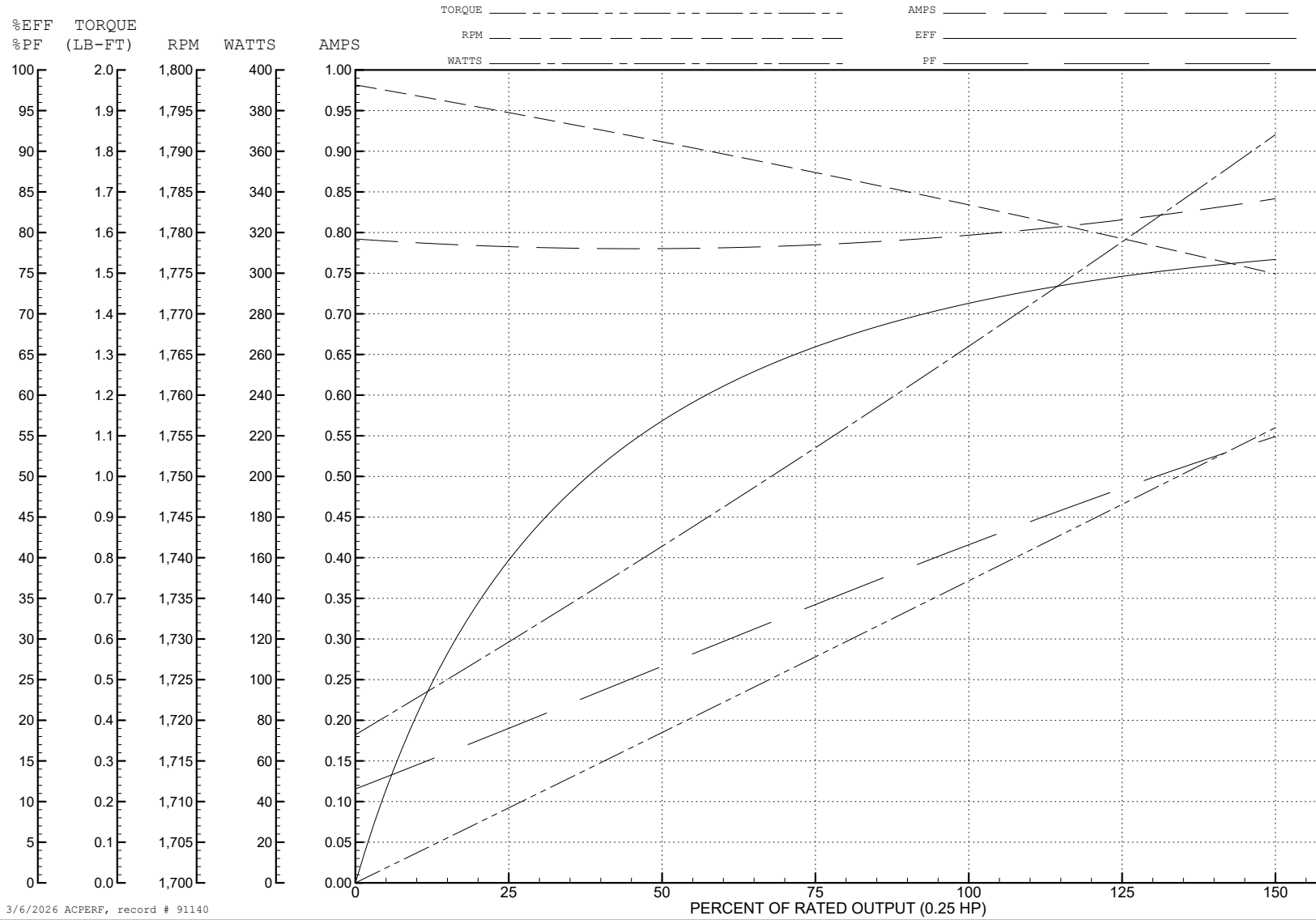
ABB Motors and Mechanical Inc.

WINDING # 35WGG155

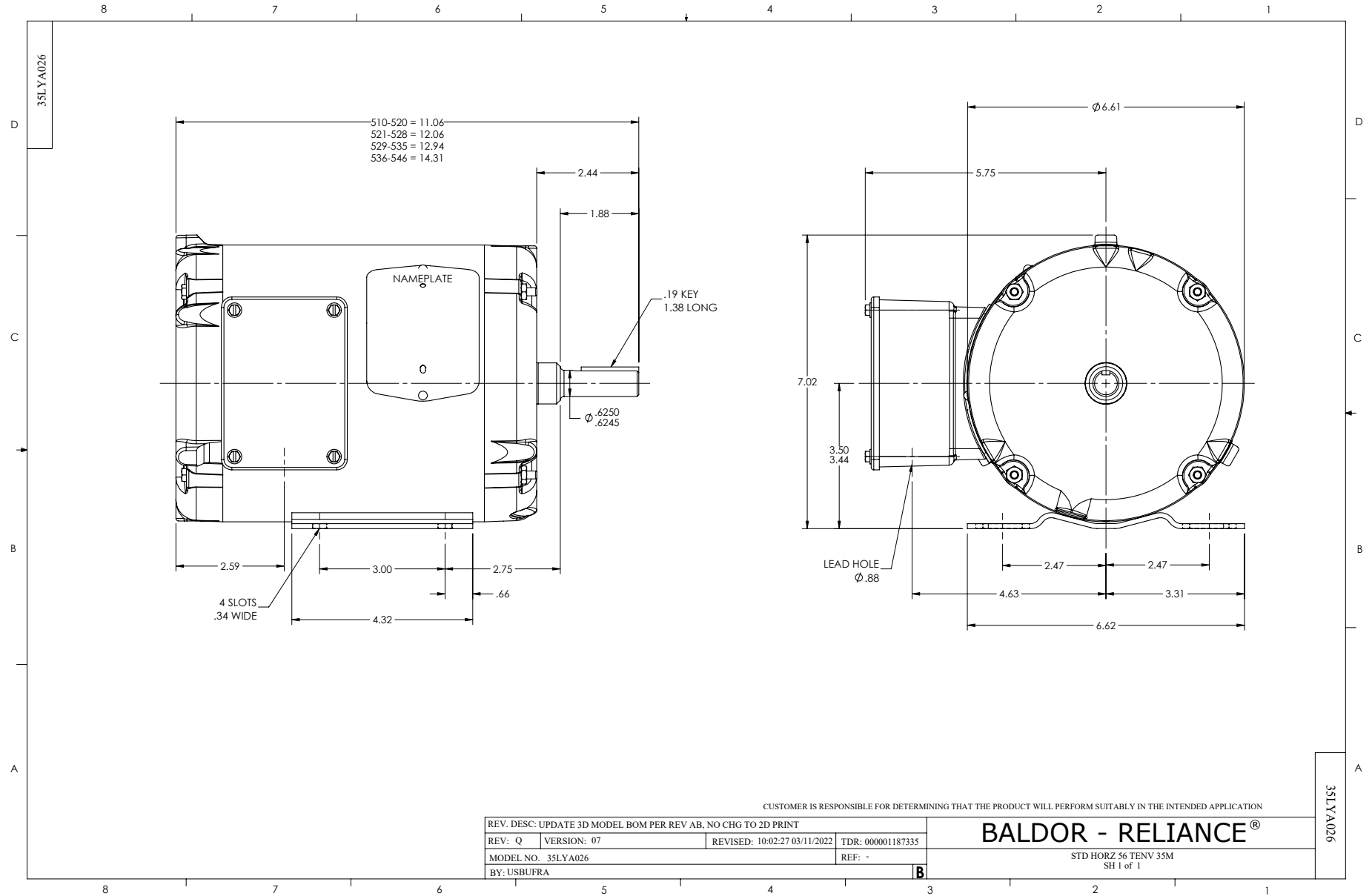
0.25 HP 3 PH 60 HZ 1785 RPM 460 V 3512M

Typical performance - not guaranteed values.

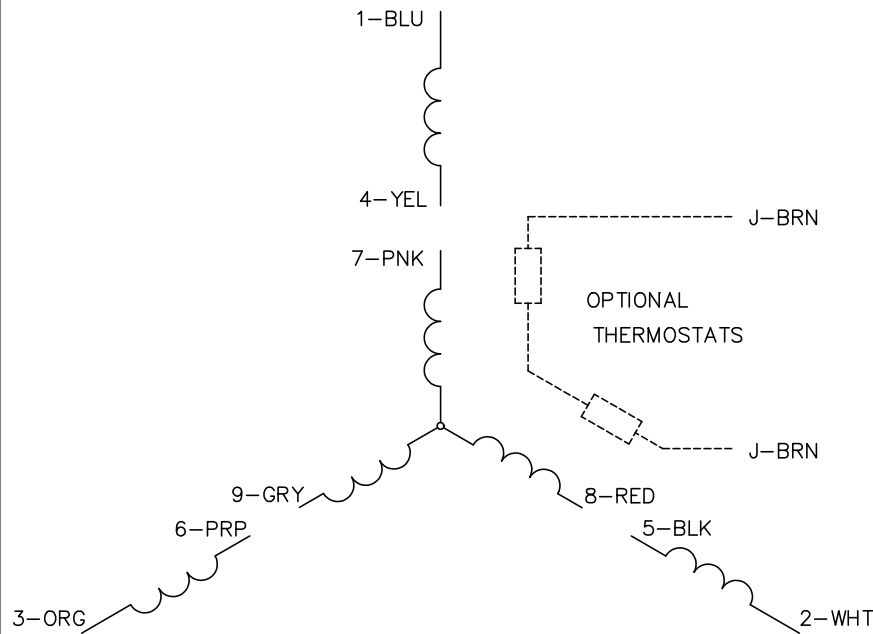
TORQUES (LB-FT): PO=6.28 PU=3.26 LR=4.04 LRA=6.71



3/6/2026 ACPERF, record # 91140



CD0005

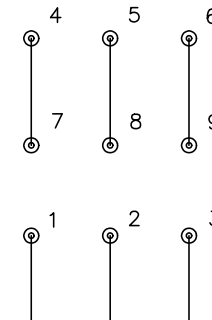


LOW VOLTAGE  
(2Y)



LINE

HIGH VOLTAGE  
(1Y)



LINE

**NOTES:**

1. INTERCHANGE ANY TWO LINE LEADS TO REVERSE ROTATION.
2. OPTIONAL THERMOSTATS ARE PROVIDED WHEN SPECIFIED.
3. ACTUAL NUMBER OF INTERNAL PARALLEL CIRCUITS MAY BE A MULTIPLE OF THOSE SHOWN ABOVE.
4. LEAD COLORS ARE OPTIONAL. LEADS MUST ALWAYS BE NUMBERED AS SHOWN.

REV. DESC: REVISE TO SHOW OPTIONAL COLORS			
REV. LTR: E	BY: JLP	REVISED: 01/19/99 10:15	TDR: 0171435
S00000		FILE: AAA00005140	MDL: -
		MTL: -	

**BALDOR ELECTRIC Co.**

3PH, DV, 9 LEADS

CD0005