

BALDOR • RELIANCE

Customer information packet

IR3507M

.75HP, 1755RPM, 1PH, 60HZ, 56NE, 3524L, TEFC, F

Class - None

Division - Not Applicable

Specifications

Enclosure	TEFC
Frame	56NE
Frame Material	Steel
Frequency	60.00 Hz
Haz Area Class and Group	None
Haz Area Division	Not Applicable
Motor Letter Type	Cap Start, Induction Run
Output @ Frequency	.750 HP @ 60 HZ
Phase	1
Synchronous Speed @ Frequency	1800 RPM @ 60 HZ
Voltage @ Frequency	230.0 V @ 60 HZ 208.0 V @ 60 HZ 115.0 V @ 60 HZ
Agency Approvals	C UR US
Ambient Temperature	40 °C
Auxiliary Box	NO AUXILLARY BOX
Auxiliary Box Lead Termination	None
Base Indicator	Rigid
Bearing Grease Type	Polyrex EM (-20F +300F)
Blower	None
Current @ Voltage	5.400 A @ 230.0 V 5.400 A @ 208.0 V 10.800 A @ 115.0 V
Design Code	L
Drip Cover	No Drip Cover
Duty Rating	CONT
Efficiency @ 100% Load	68.0 %
Electrically Isolated Bearing	Not Electrically Isolated
Feedback Device	NO FEEDBACK
Front Shaft Indicator	None
Heater Indicator	No Heater
High Voltage Full Load Amps	5.4 a

Part detail

Revision	B
Type	AC
Mech. spec.	35K634
Base	
Status	PRD/A
Elec. spec.	35WGG385
Layout	35LYK634
Eff. date	10-20-2025
CD Diagram	CD0831A02
Poles	04
Leads	6#18,1#16 #4TH
Proprietary	False
Created date	11-22-2024

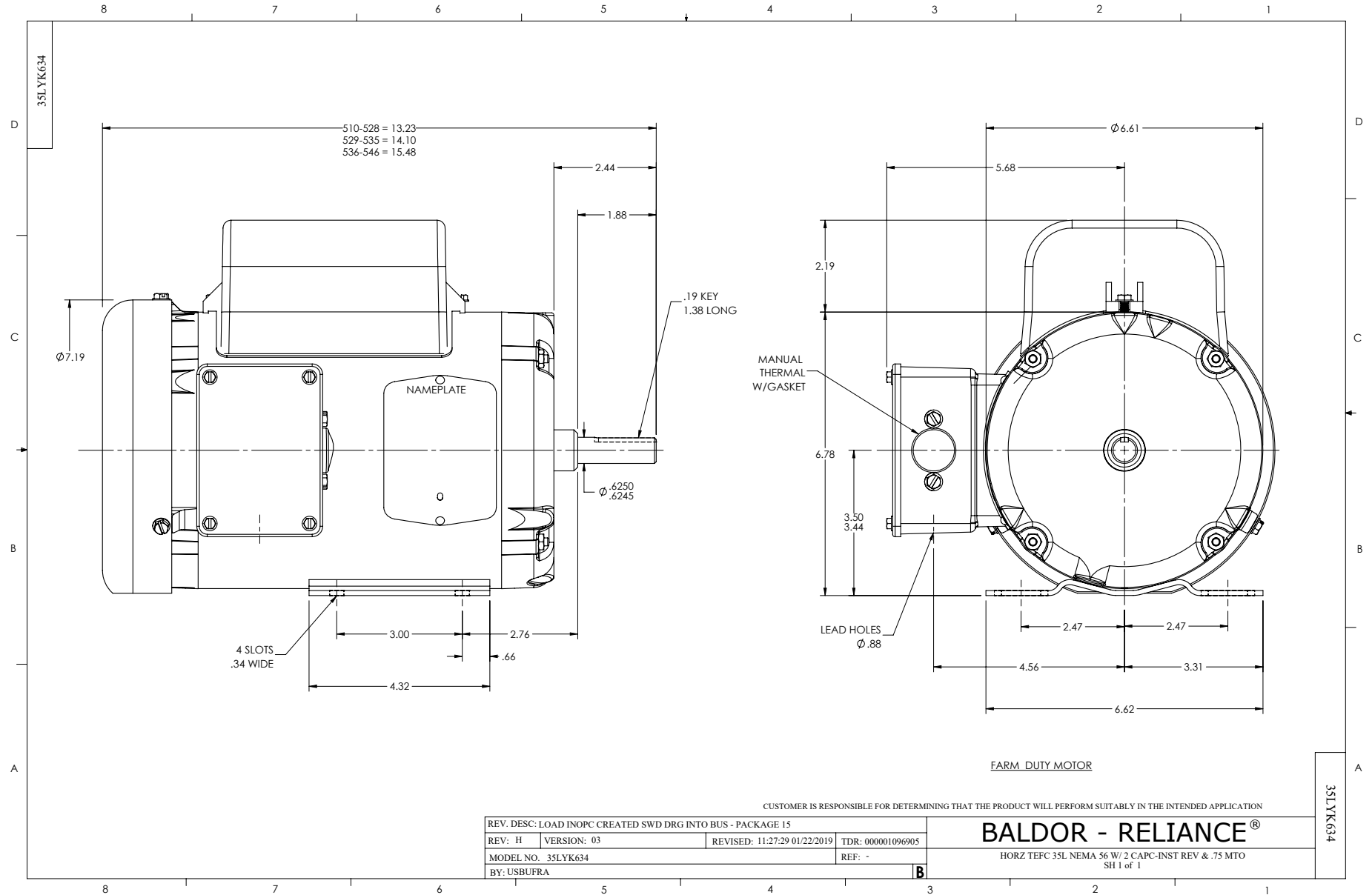
Insulation Class	F
Inverter Code	Not Inverter
KVA Code	N
Lifting Lugs	No Lifting Lugs
Locked Bearing Indicator	No Locked Bearing
Motor Lead Quantity/Wire Size	6 @ 18 AWG
Motor Lead Termination	Flying Leads
Motor Standards	NEMA
Motor Type	3524L
Mounting Arrangement	F1
Number of Poles	4
Overall Length	13.23 IN
Power Factor	66
Product Family	General Purpose
Pulley End Bearing Type	Ball
Pulley Face Code	Standard
Pulley Shaft Indicator	Standard
Rodent Screen	None
Service Factor	1.00
Shaft Diameter	0.625 IN
Shaft Ground Indicator	No Shaft Grounding
Shaft Rotation	Reversible
Shaft Slinger Indicator	No Slinger
Speed	1755 rpm
Speed Code	Single Speed
Starting Method	Direct on line
Thermal Device - Bearing	None
Thermal Device - Winding	None
Vibration Sensor Indicator	No Vibration Sensor
Winding Thermal 1	Manual Thermal Overload
Winding Thermal 1 Location	KO
Winding Thermal 2	None

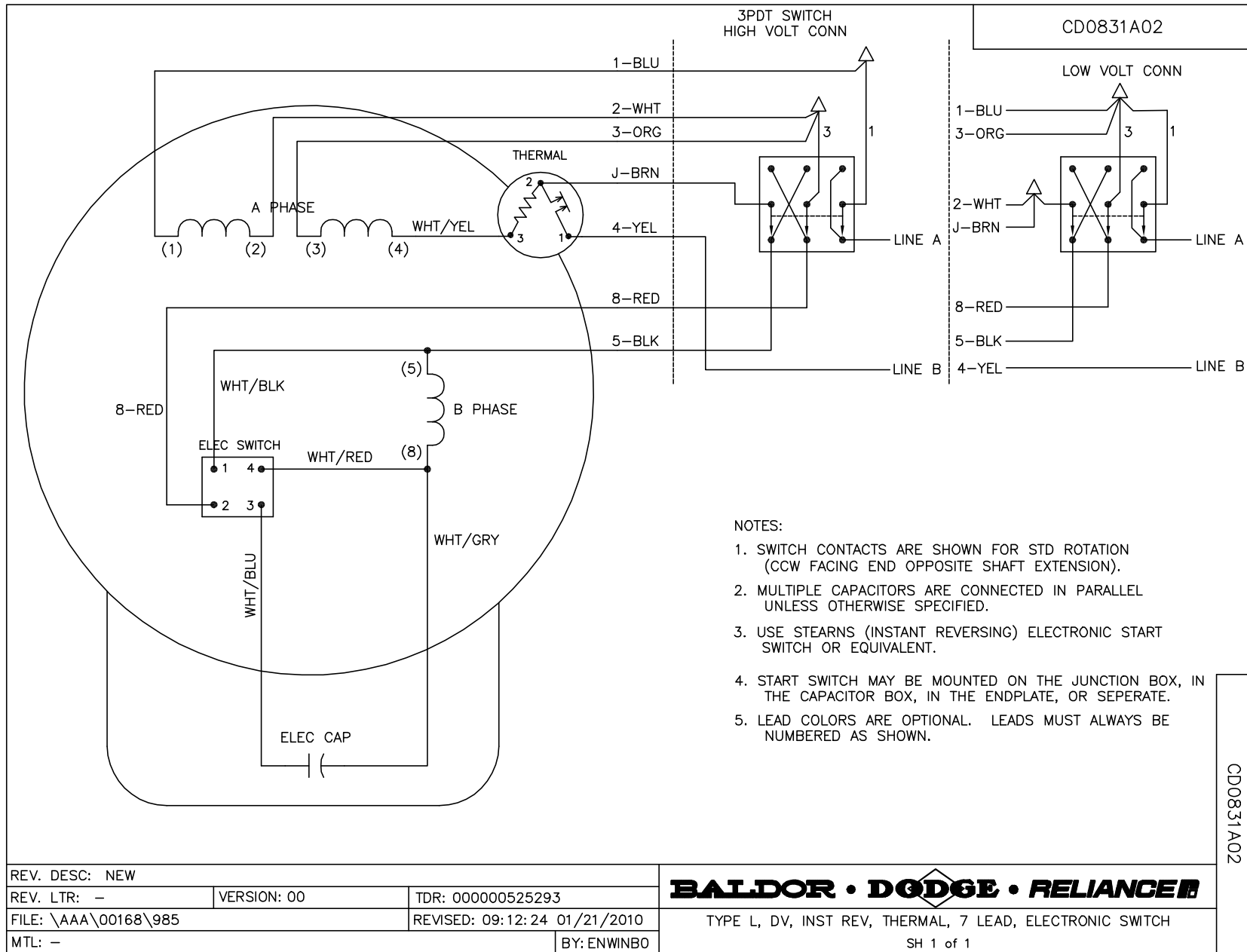
Nameplate

NP1280L									
CAT.NO.	IR3507M								
SPEC.	35K634G385G1								
HP	.75								
VOLTS	115/208-230								
AMP	10.8/5.4								
RPM	1755								
FRAME	56NE	HZ	60	PH	1				
SER.F.	1.00	CODE	N	DES	L	CL	F		
NEMA-NOM-EFF	68	PF	66						
RATING	40C AMB-CONT								
CC									
DE	6205	ODE	6203						
ENCL	TEFC	SN							

Accessories

Part number	Description	Multiplier
35-8762	C FACE KIT	A8
35EP1506A01SP	D-FLANGE KIT	A8





CD0831A02

REV. DESC: NEW		
REV. LTR: -	VERSION: 00	TDR: 000000525293
FILE: \AAA\00168\985	REVISED: 09:12:24 01/21/2010	
MTL: -	BY: ENWINBO	

BALDOR • DODGE • RELIANCE

TYPE L, DV, INST REV, THERMAL, 7 LEAD, ELECTRONIC SWITCH

SH 1 of 1