

**BALDOR • RELIANCE**

---

# Customer information packet

## IDM3764T

38M 6P TEBC HOR 215TC T'STATS INVERTER

Class - None

Division - Not Applicable

## Specifications

Enclosure	TEBC
Frame	215TC
Frame Material	Iron
Frequency	60.00 Hz
Haz Area Class and Group	None
Haz Area Division	Not Applicable
Motor Letter Type	Three Phase
Output @ Frequency	3.000 HP @ 60 HZ
Phase	3
Synchronous Speed @ Frequency	1200 RPM @ 60 HZ
Voltage @ Frequency	230.0 V @ 60 HZ 460.0 V @ 60 HZ
Agency Approvals	CSA UR
Ambient Temperature	40 °C
Auxiliary Box	NO AUXILLARY BOX
Auxiliary Box Lead Termination	None
Base Indicator	Rigid
Bearing Grease Type	Polyrex EM (-20F +300F)
Blower	BLOWER
Current @ Voltage	4.500 A @ 460.0 V 9.000 A @ 230.0 V 9.800 A @ 208.0 V
Design Code	B
Drip Cover	No Drip Cover
Duty Rating	CONT
Efficiency @ 100% Load	90.2 %
Electrically Isolated Bearing	Not Electrically Isolated
Feedback Device	NO FEEDBACK
Front Shaft Indicator	None
Heater Indicator	No Heater
High Voltage Full Load Amps	4.5 a

## Part detail

Revision	E
Type	AC
Mech. spec.	07D515
Base	
Status	PRD/A
Elec. spec.	07WGX822
Layout	07LYD515
Eff. date	09-30-2025
CD Diagram	CD0005
Poles	06
Leads	9#14
Proprietary	False
Created date	03-18-2019

Insulation Class	H
Inverter Code	Inverter Duty
KVA Code	K
Lifting Lugs	Standard Lifting Lugs
Locked Bearing Indicator	Locked Bearing
Max Speed	2300 rpm
Motor Lead Quantity/Wire Size	9 @ 14 AWG
Motor Lead Termination	Flying Leads
Motor Standards	NEMA
Motor Type	0738M
Mounting Arrangement	F1
Number of Poles	6
Overall Length	25.58 IN
Power Factor	70
Product Family	General Purpose
Pulley End Bearing Type	Ball
Pulley Face Code	C-Face
Pulley Shaft Indicator	Standard
Rodent Screen	None
RoHS Status	ROHS COMPLIANT
Service Factor	1.00
Shaft Diameter	1.375 IN
Shaft Ground Indicator	No Shaft Grounding
Shaft Rotation	Reversible: Connected Standard
Shaft Slinger Indicator	No Slinger
Speed	1165 rpm
Speed Code	Single Speed
Starting Method	Direct on line
Thermal Device - Bearing	None
Thermal Device - Winding	Normally Closed Thermostat
Vibration Sensor Indicator	No Vibration Sensor
Winding Thermal 1	None
Winding Thermal 2	None

**Nameplate**

NP4009L	
<b>CAT.NO.</b>	IDM3764T
<b>SPEC.</b>	07D515X822G1
<b>FRAME</b>	215TC <b>H.P.</b> 3 TE
<b>VOLTS</b>	230/460
<b>MAG. CUR.</b>	4.6/2.3 <b>F.L. AMPS</b> 9/4.5
<b>R.P.M.</b>	1165 <b>R.P.M. MAX</b> 2300
<b>HZ.</b>	60 <b>PH.</b> 3 <b>CLASS</b> H
<b>SER.F.</b>	1.00 <b>DES.</b> B <b>SL HZ</b> 1.7
<b>NEMA NOM. EFF.</b>	90.2 <b>WK2</b> 0.945
<b>BLOWER</b>	<b>V</b> <b>PH</b> <b>HZ</b> <b>AMPS</b>
<b>RATING</b>	40C AMB-CONT
<b>DE</b>	6307 <b>ODE</b> 6206
<b>CC</b>	010A <b>SN</b>
	1000:1 CT/VT

NP VOLTS	230/460	Base Volt	460	WYE CONN EQ CKT OHMS PER PHASE (BASE RATING, 20C)			
NP AMPS	9/4.5	NL AMPS	2.32	R1	1.380	X1	7.300
HP	3	Slip (HZ)	1.55	R2	1.660	X2	6.590
BASE SPEED	1169	WK <sup>2</sup> (lb-ft <sup>2</sup> )	0.945			XM	94.400
PHASE/HZ	3/60						

**Rated Full Load Data**

	RPM	HP	Torque	Volts	Freq-Hz	Amps
Base Speed	1169	3.0	13.5	460	60	4.5
Max Speed	1752	3.0	9.0	460	90	4.1
CT Min Speed	1,169	0.003	13.5	0.46	0.06	4.5

**Load Performance at Base Speed**

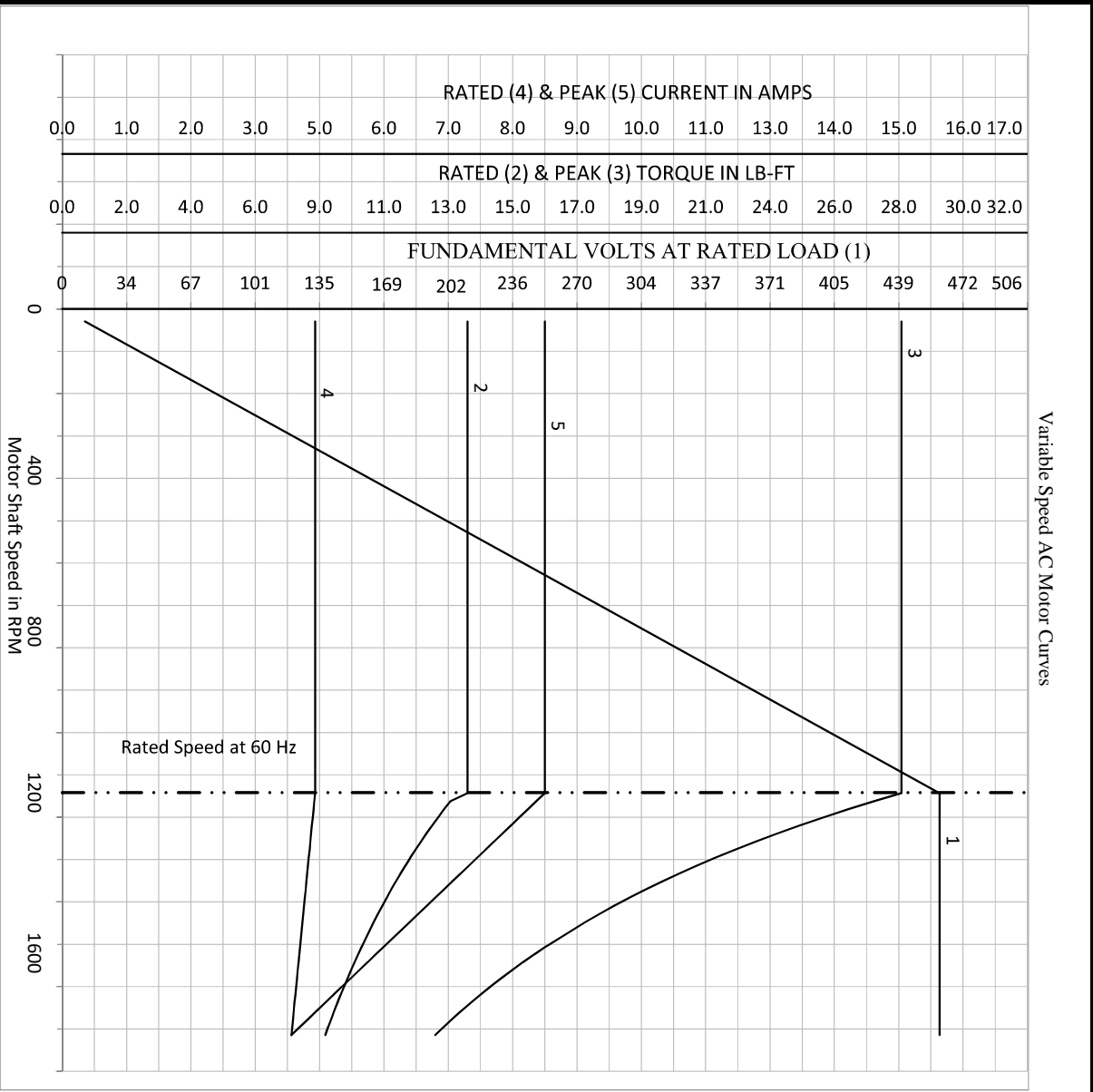
	RPM	HP	Torque	Volts	Freq-Hz	Amps
No Load	1199	0.0	0.0	460	60	2.3
1/4	1191	0.8	3.4	460	60	2.6
1/2	1184	1.5	6.7	460	60	3.1
3/4	1176	2.3	10.1	460	60	3.7
Full Load	1169	3.0	13.5	460	60	4.5
O/L	1128	6.0	27.9	460	60	8.6

Blower Data	Volts	Ph/Hz	FL Amps	LR Amps	Frame	CFM

Remarks: Calculated Data

<b>BALDOR • RELIANCE</b>	DR BY	USBRRANI	A-C MOTOR	07WGx822
	CK BY	CD	PERFORMANCE	
	APP BY	USBRRANI	CURVES	
	DATE	11/5/2024		Record: 109146

NP VOLTS	230/460	Base Volt	460	WYE CONN EQ. CRT OHMS PER PHASE (BASE RATING, 20C)			
NP AMPS	9/4.5	NL AMPS	2.32	R1	1.380	X1	7.300
HP	3	Slip (Hz)	1.55	R2	1.660	X2	6.590
BASE SPEED	1169	WK <sup>2</sup> (lb-ft <sup>2</sup> )	0.945	XM			94.400
PHASE/HZ	3/60						



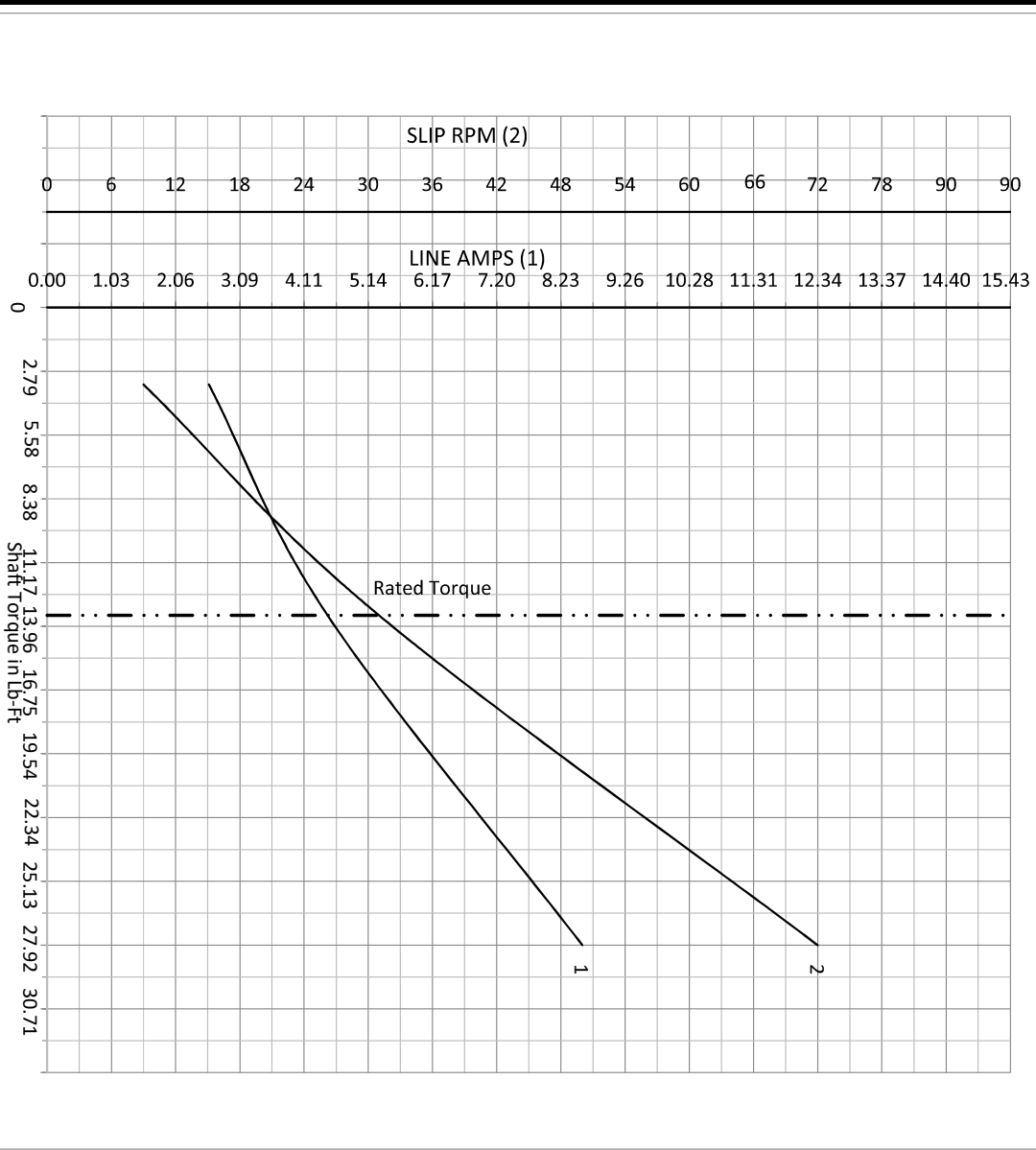
Calculated Data  
Data Valid For Nameplate Speed Range only

**BALDOR • RELIANCE**

DR BY <u>USBRRANI</u> CK BY <u>CD</u> APP BY <u>USBRRANI</u> DATE <u>11/5/2024</u>	<b>A-C MOTOR PERFORMANCE CURVES</b>  <b>07WGX822</b>  Record: 109146
---	--

NP VOLTS	230/460	0	0	WVE CONN EQ. CRT OHMS PER PHASE (BASE RATING, 20C)			
NP AMPS	9/4.5	Base Volt	460	R1	1.380	X1	7.300
HP	3	NL AMPS	2.32	R2	1.660	X2	6.590
BASE SPEED	1169	Slip (HZ)	1.55	XM			94.400
PHASE/HZ	3/60	WK2 (lb-ft <sup>2</sup> )	0.945				

Vector PWM Inverter Duty  
Variable Speed AC Motor Curves



Calculated Data

Data Valid For Nameplate Speed Range only

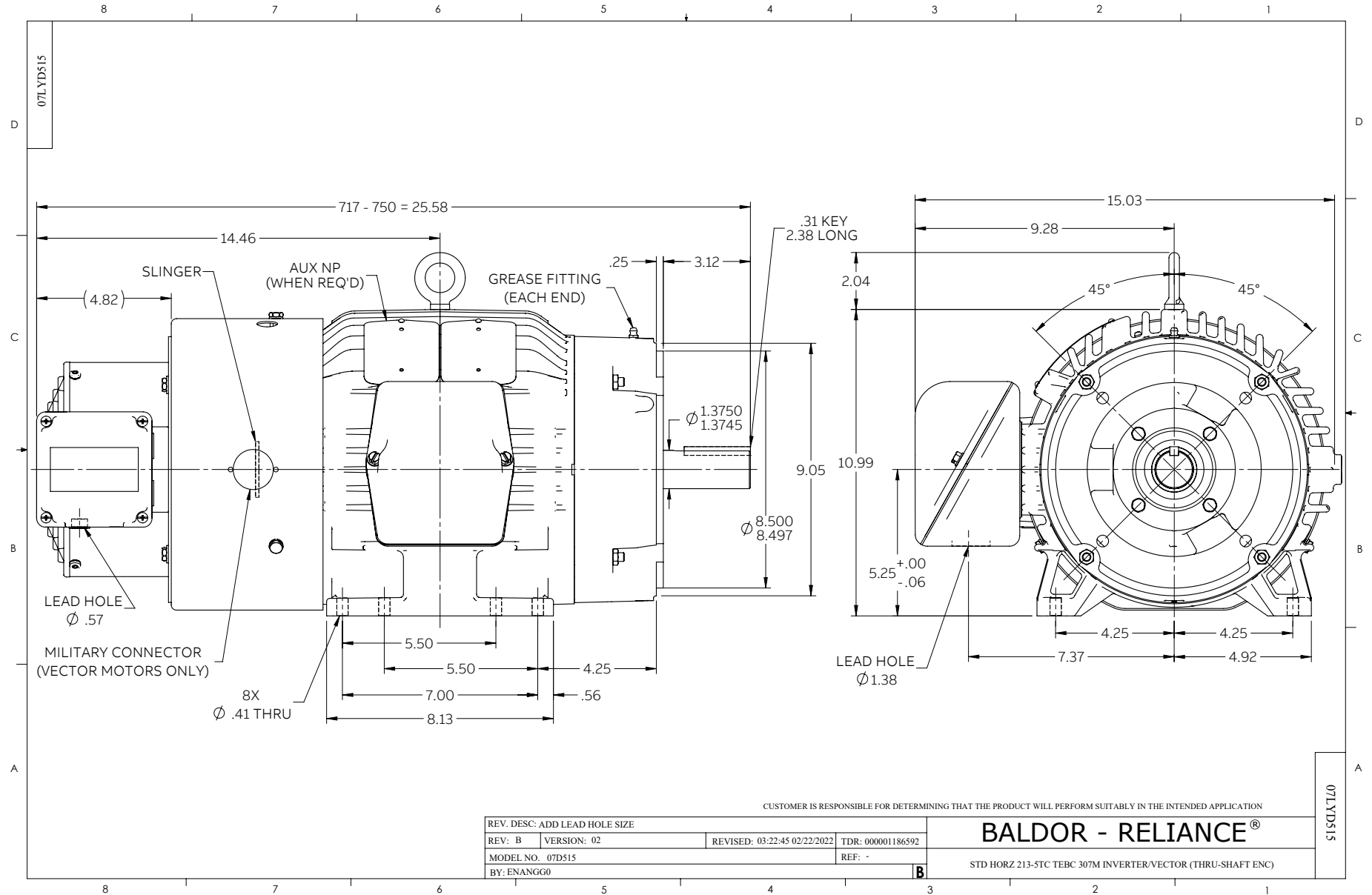


DR BY USBRRANI  
 CK BY CD  
 APP BY USBRRANI  
 DATE 11/5/2024

**A-C MOTOR  
 PERFORMANCE  
 CURVES**

**07WGX822**

Record: 109146

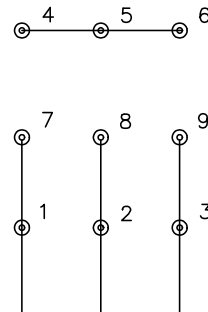




CD0005



LOW VOLTAGE  
(2Y)



LINE

HIGH VOLTAGE  
(1Y)



LINE

NOTES:

1. INTERCHANGE ANY TWO LINE LEADS TO REVERSE ROTATION.
2. OPTIONAL THERMOSTATS ARE PROVIDED WHEN SPECIFIED.
3. ACTUAL NUMBER OF INTERNAL PARALLEL CIRCUITS MAY BE A MULTIPLE OF THOSE SHOWN ABOVE.
4. LEAD COLORS ARE OPTIONAL. LEADS MUST ALWAYS BE NUMBERED AS SHOWN.

CD0005

REV. DESC: REVISE TO SHOW OPTIONAL COLORS			
REV. LTR: E	BY: JLP	REVISED: 01/19/99 10:15	TDR: 0171435
S00000		FILE: AAA00005140	MDL: -
		MTL: -	

**BALDOR ELECTRIC Co.**

3PH, DV, 9 LEADS