



Customer information packet

HBEM3559T

3HP, 3450RPM, 3PH, 60HZ, 145T, 3532M, TEFC, F1

Class - None

Division - Not Applicable

Specifications

Enclosure	TEFC
Frame	145T
Frame Material	Steel
Frequency	60.00 Hz
Haz Area Class and Group	None
Haz Area Division	Not Applicable
Motor Letter Type	Three Phase
Output @ Frequency	3.000 HP @ 60 HZ
Phase	3
Synchronous Speed @ Frequency	3600 RPM @ 60 HZ
Voltage @ Frequency	460.0 V @ 60 HZ 230.0 V @ 60 HZ
Agency Approvals	CURUSEEV NEMA PREMIUM WEEE
Ambient Temperature	40 °C
Auxiliary Box	NO AUXILLARY BOX
Auxiliary Box Lead Termination	None
Base Indicator	Rigid
Bearing Grease Type	Polyrex EM (-20F +300F)
Blower	None
Current @ Voltage	7.200 A @ 230.0 V 7.900 A @ 208.0 V 3.600 A @ 460.0 V
Design Code	B
Drip Cover	No Drip Cover
Duty Rating	CONT
Efficiency @ 100% Load	86.5 %
Electrically Isolated Bearing	Electrically Isolated Bearings
Feedback Device	NO FEEDBACK
Front Shaft Indicator	None
Heater Indicator	No Heater

Part detail

Revision	-
Type	AC
Mech. spec.	35E5738
Base	
Status	PRD/A
Elec. spec.	35WGQ060
Layout	35LYE5738
Eff. date	08-04-2025
CD Diagram	CD0005
Poles	02
Leads	9#18
Proprietary	False
Created date	07-24-2025

High Voltage Full Load Amps	3.6 a
Insulation Class	H
Inverter Code	Inverter Duty
KVA Code	L
Lifting Lugs	No Lifting Lugs
Locked Bearing Indicator	Locked Bearing
Max Speed	5400 rpm
Motor Finish	CLEAR COAT
Motor Lead Quantity/Wire Size	9 @ 18 AWG
Motor Lead Termination	Flying Leads
Motor Standards	NEMA
Motor Type	3532M
Mounting Arrangement	F1
Number of Poles	2
Overall Length	14.17 IN
Power Factor	92
Product Family	General Purpose
Pulley End Bearing Type	Sealed Bearing
Pulley Face Code	Standard
Pulley Shaft Indicator	Standard
Rodent Screen	None
RoHS Status	ROHS COMPLIANT
Service Factor	1.15
Shaft Diameter	0.875 IN
Shaft Ground Indicator	No Shaft Grounding
Shaft Rotation	Reversible
Shaft Slinger Indicator	No Slinger
Speed	3450 rpm
Speed Code	Single Speed
Starting Method	Direct on line
Thermal Device - Bearing	None
Thermal Device - Winding	None
Vibration Sensor Indicator	No Vibration Sensor
Winding Thermal 1	None

Winding Thermal 2

None

Nameplate

NP4246A01A01											
CAT #	HBEM3559T			WGT				LBS			
SPEC	35E5738Q060G1			ENCL	TEFC						
SER #				CC	010A		IP	54			
HP	3		MAG CUR	2.4/1.2							
VOLTS	230/460			NEMA NOM. EFF			86.5				
AMPS	7.2/3.6			PF	92						
RATING	40C AMB-CONT										
RPM	3450			MAX RPM			5400				
FRAME	145T	HZ	60	CODE	L	CLASS	H				
SER.F.	1.15	SF AMP	8.3/4.2		PH	3	DES	B			
DE	6205		ODE	6203							
LUBRICATION	POLYREX EM										
ID LOGO	INV TYPE:	VPWM	CHP	60	TO	90					
ID LOGO	WK2	0.09	CT	6	TO	60					
ID LOGO	SL HZ	2.5	VT	3	TO	60					
										ID.ABB/BALDOR/	
YR											

AC Induction Motor Performance Data

Record # 53334

Typical performance - not guaranteed values

Winding: 35WGM497-R064		Type: 3526M		Enclosure: TEFC			
Nameplate Data			460 V, 60 Hz: High Voltage Connection				
Rated Output (HP)	1	Full Load Torque	4.51 LB-FT				
Volts	230/460	Start Configuration	direct on line				
Full Load Amps	3.6/1.8	Breakdown Torque	15.3 LB-FT				
R.P.M.	1155	Pull-up Torque	11.1 LB-FT				
Hz	60 Phase	3	Locked-rotor Torque	11.9 LB-FT			
NEMA Design Code	B	KVA Code	K	Starting Current	10.8 A		
Service Factor (S.F.)	1.15	No-load Current	1.21 A				
NEMA Nom. Eff.	82.5	Power Factor	64	Line-line Res. @ 25°C	16.1 Ω		
Rating - Duty	40C AMB-CONT		Temp. Rise @ Rated Load	47°C			
S.F. Amps			Temp. Rise @ S.F. Load	56°C			
			Locked-rotor Power Factor	42			
			Rotor inertia	0.155 LB-FT ²			

Load Characteristics 460 V, 60 Hz, 1 HP

% of Rated Load	25	50	75	100	125	150	S.F.
Power Factor	27	43	55	64	70	75	68
Efficiency	69.3	79.4	82.1	82.8	82.1	80.5	82.4
Speed	1190	1181	1170	1159	1146	1130	1151
Line amperes	1.25	1.36	1.53	1.75	2.02	2.33	1.91

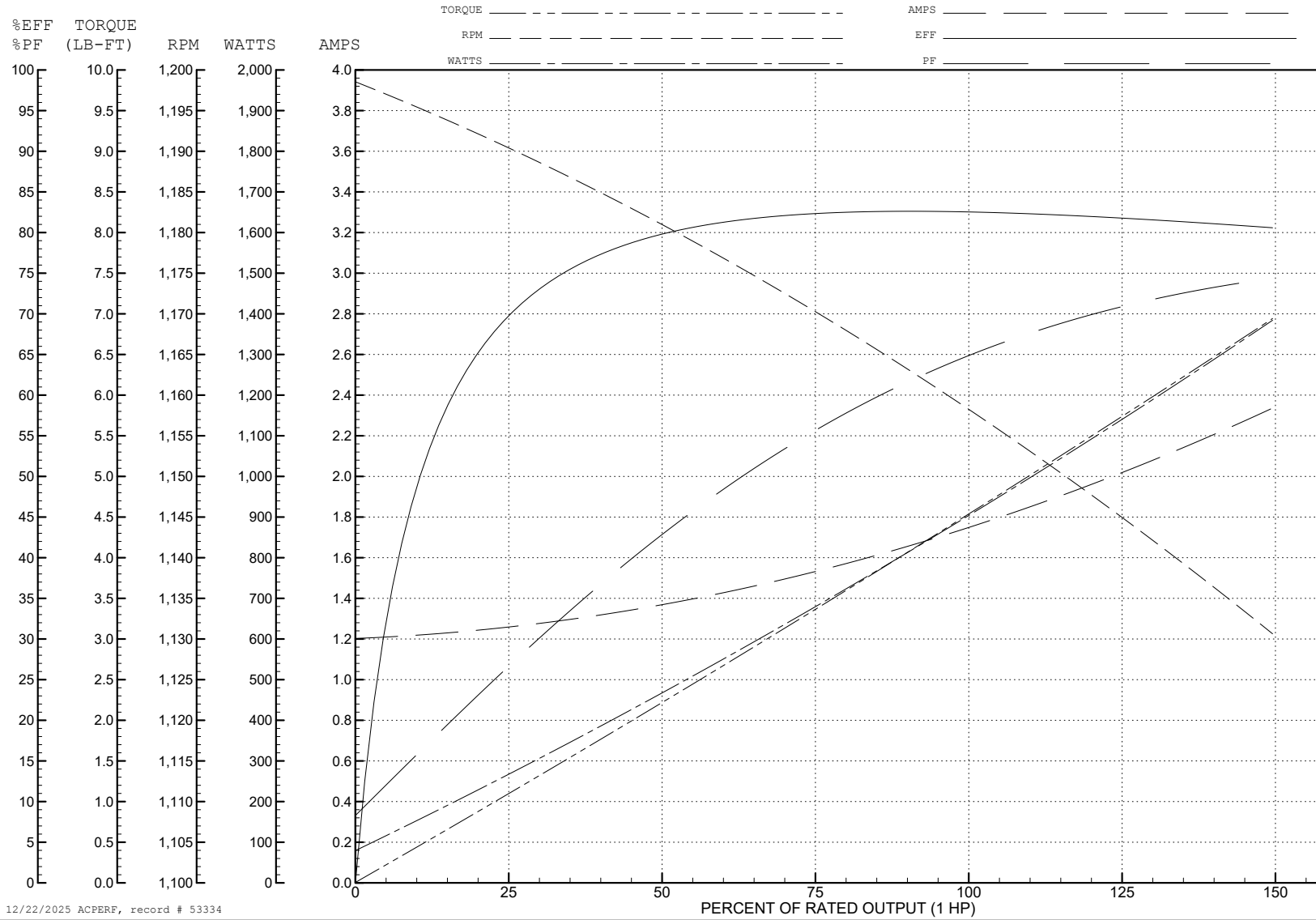
ABB Motors and Mechanical Inc.

WINDING # 35WGM497

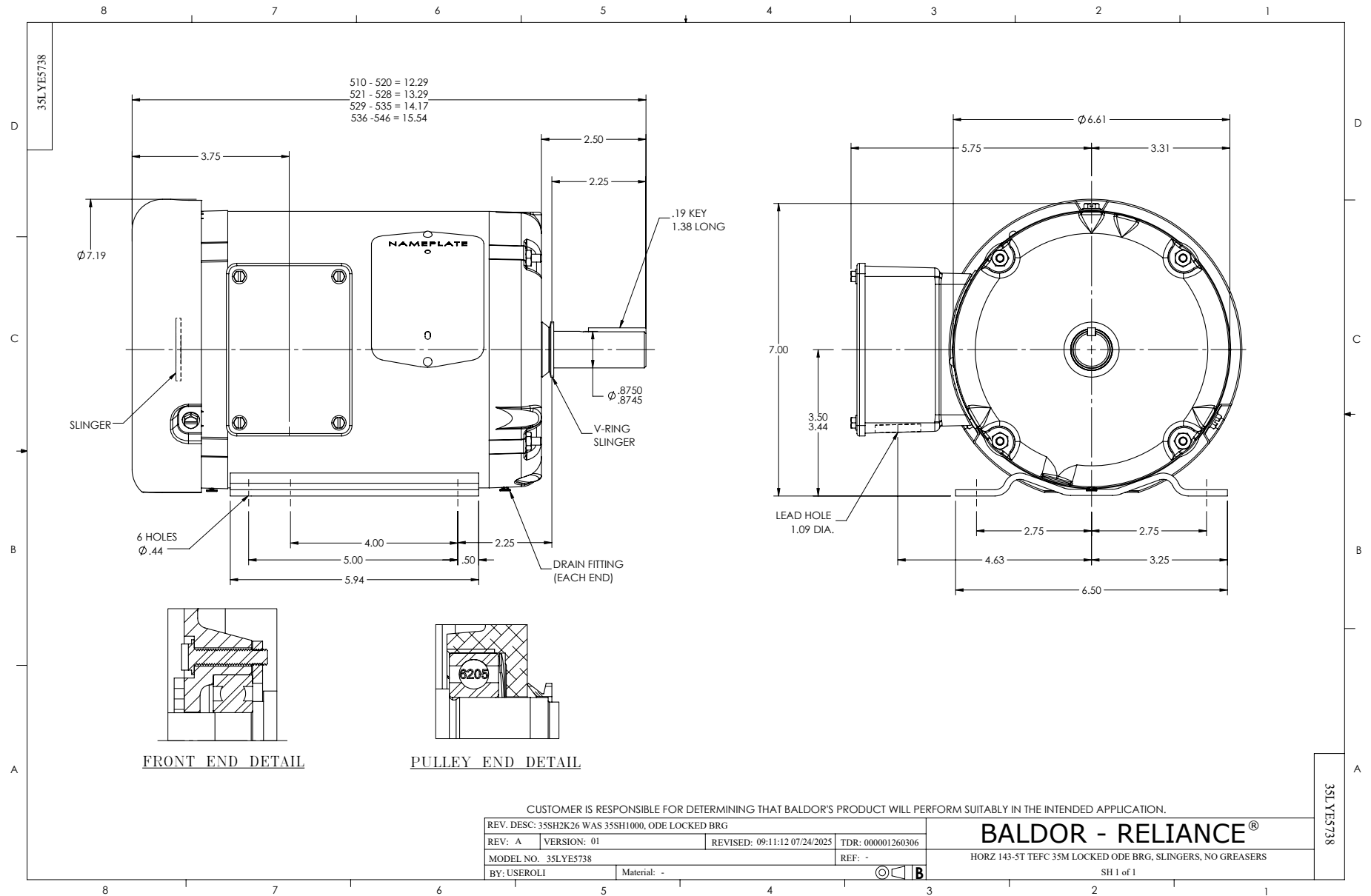
Typical performance - not guaranteed values.

1 HP 3 PH 60 HZ 1155 RPM 460 V 3526M

TORQUES (LB-FT): PO=15.3 PU=11.1 LR=11.9 LRA=10.8



12/22/2025 ACPERF, record # 53334



CD0005



LOW VOLTAGE
(2Y)



LINE

HIGH VOLTAGE
(1Y)



LINE

NOTES:

1. INTERCHANGE ANY TWO LINE LEADS TO REVERSE ROTATION.
2. OPTIONAL THERMOSTATS ARE PROVIDED WHEN SPECIFIED.
3. ACTUAL NUMBER OF INTERNAL PARALLEL CIRCUITS MAY BE A MULTIPLE OF THOSE SHOWN ABOVE.
4. LEAD COLORS ARE OPTIONAL. LEADS MUST ALWAYS BE NUMBERED AS SHOWN.

CD0005

REV. DESC: REVISE TO SHOW OPTIONAL COLORS			
REV. LTR: E	BY: JLP	REVISED: 01/19/99 10:15	TDR: 0171435
S00000		FILE: AAA00005140	MDL: -
		MTL: -	

BALDOR ELECTRIC Co.

3PH, DV, 9 LEADS