

BALDOR • RELIANCE

Customer information packet

FPM2539TS-2/4

40HP, 1770RPM, 3PH, 60HZ, 324TS, 4052M, ODP, F1
A

Specifications

Enclosure	ODP
Frame	324TS
Frame Material	Steel
Frequency	60.00 Hz
Motor Letter Type	Three Phase
Output @ Frequency	40.000 HP @ 60 HZ
Phase	3
Synchronous Speed @ Frequency	1800 RPM @ 60 HZ
Voltage @ Frequency	200.0 V @ 60 HZ 400.0 V @ 60 HZ
Agency Approvals	CSA EEV UL
Ambient Temperature	40 °C
Auxiliary Box	NO AUXILLARY BOX
Auxiliary Box Lead Termination	None
Base Indicator	Rigid
Bearing Grease Type	Polyrex EM (-20F +300F)
Blower	None
Current @ Voltage	112.000 A @ 200.0 V 56.000 A @ 400.0 V
Design Code	B
Drip Cover	No Drip Cover
Duty Rating	CONT
Efficiency @ 100% Load	93.0 %
Electrically Isolated Bearing	Not Electrically Isolated
Feedback Device	NO FEEDBACK
Front Face Code	Standard
Front Shaft Indicator	None
Heater Indicator	No Heater
High Voltage Full Load Amps	56.0 a
Insulation Class	F
Inverter Code	Not Inverter

Part detail

Revision	E
Type	AC
Mech. spec.	40H07
Base	
Status	PRD/A
Elec. spec.	40WGX327
Layout	40LYH007
Eff. date	07-24-2023
CD Diagram	CD0104
Poles	04
Leads	12#10
Proprietary	False
Created date	01-11-2016

KVA Code	G
Lifting Lugs	Standard Lifting Lugs
Locked Bearing Indicator	No Locked Bearing
Motor Lead Exit	Ko Box
Motor Lead Quantity/Wire Size	12 @ 10 AWG
Motor Lead Termination	Flying Leads
Motor Standards	NEMA
Motor Type	4052M
Mounting Arrangement	F1
Number of Poles	4
Overall Length	24.69 IN
Power Factor	83
Product Family	Fire Pump Motor
Pulley End Bearing Type	Ball
Pulley Face Code	Standard
Pulley Shaft Indicator	Standard
Rodent Screen	None
Service Factor	1.15
Shaft Diameter	1.875 IN
Shaft Extension Location	Pulley End
Shaft Ground Indicator	No Shaft Grounding
Shaft Rotation	Reversible
Shaft Slinger Indicator	No Slinger
Speed	1770 rpm
Speed Code	Single Speed
Starting Method	Wye Start - Delta Run
Thermal Device - Bearing	None
Thermal Device - Winding	None
Vibration Sensor Indicator	No Vibration Sensor
Winding Thermal 1	None
Winding Thermal 2	None

Nameplate

NP3454L

CAT.NO.	FPM2539TS-2/4	CUST P/N		I.P.	23
SPEC.	40H007X327H2	SER.NO.		FRAME	324TS
HZ	60	HP	40	RPM	1770
VOLTS	200/400	CODE	G	VOLTS	
AMPS	112/56	DES	B	AMPS	
EFF	93	SER.F.	1.15	PF	83
RATING	40C AMB-CONT	DE BRG	6312	GREASE	POLYREX EM
BLANK		ODE BRG	6309	MTR. WT.	380
		CLASS	F	PH	3
		ENCL	ODP	CC	010A
HTR-VOLTS		HTR-AMPS		HTR-WATTS	

Parts list

Part number	Description	Quantity
SA313311	SA 40H007X327H2	1.000 ea
RA300767	RA 40H007X327H2	1.000 ea
HA6361A01	LIFTING LUG FOR 37, 39 & 40 FRAME ZINC	2.000 ea
HA6017	CAST ADAPTER, 40,42 KOBX	1.000 ea
19XW3118A12	.31-18 X .75 HEX WASHER HEAD TAPTITE II	2.000 ea
HW1001A31	LOCKWASHER 5/16, ZINC PLT.591 OD, .319 I	2.000 ea
WD1000B25	GND LUG, BURNDY L125HP OR T&B L125HP-BB	1.000 ea
19XW3118G08	.31-18X.50,HEX WSHR HD,TAPTITE 2,GREEN	1.000 ea
10CB3001	CONDUIT BOX CAST W/2.500 LEAD HOLE	1.000 ea
19XW3118A12	.31-18 X .75 HEX WASHER HEAD TAPTITE II	4.000 ea
HW1001A31	LOCKWASHER 5/16, ZINC PLT.591 OD, .319 I	4.000 ea
40EP3200A02	STD FREP OPEN 309 BRG	1.000 ea
HA4051A00	PLASTIC CAP FOR GREASE FITTING	1.000 ea
HW5100A11	W3917-042 WVY WSHR (WB)	1.000 ea
40EP3201A01	PU ENDPLATE, MACH - OPEN - FOR 312 BRG	1.000 ea
HA4051A00	PLASTIC CAP FOR GREASE FITTING	1.000 ea
XY3816A12	3/8-16 FINISHED NUT W/SERRATIONS	8.000 ea
10CB3500SP	CONDUIT BOX LID, CAST	1.000 ea
51XW2520A12	.25-20 X .75, TAPTITE II, HEX WSHR SLTD	4.000 ea
HW2501H18	KEY, 1/2 SQ X 2.000	1.000 ea
HA4051A00	PLASTIC CAP FOR GREASE FITTING	1.000 ea
HW4500A03	GREASE FITTING, .125 NPT 1610(ALEMITE) 8	1.000 ea
HW4500A20	1/8NPT SL PIPE PLUG	1.000 ea
MJ1000A02	GREASE, POLYREX EM EXXON	0.050 lb
HW4500A03	GREASE FITTING, .125 NPT 1610(ALEMITE) 8	1.000 ea
HW4500A20	1/8NPT SL PIPE PLUG	1.000 ea
HA4051A00	PLASTIC CAP FOR GREASE FITTING	1.000 ea
HA3154A04	THRUBOLT STUD 3/8-16 X 18.750	4.000 ea
MG1025R44	WILKOFAS, 784.109, CARMINE RED #3002	0.050 ga
85XU0407S04	4X1/4 U DRIVE PIN STAINLESS	2.000 ea
40AD2002A01	LEXAN BAFFLE 40 FR OPEN	1.000 ea

LB1624	COMBINED WARNING LABEL, ISO/ANSI PICTOGR	1.000 ea
40AD2002A01	LEXAN BAFFLE 40 FR OPEN	1.000 ea
LC0104A01	CONNECTION DIAGRAM	1.000 ea
NP3454L	ALUM FIRE PUMP MOTOR(LEGACY/BALDOR ONLY)	1.000 ea
40PA1000	PACKAGING GROUP	1.000 ea

AC Induction Motor Performance Data

Record # 54837

Typical performance - not guaranteed values

Winding: 40WGX327-R001		Type: 4052M	Enclosure: OPSB	
Nameplate Data			400 V, 60 Hz: High Voltage Connection	
Rated Output (HP)	40	Full Load Torque	119 LB-FT	
Volts	200/400	Start Configuration	direct on line	
Full Load Amps	112/56	Breakdown Torque	323 LB-FT	
R.P.M.	1770	Pull-up Torque	157 LB-FT	
Hz	60 Phase	3	Locked-rotor Torque	195 LB-FT
NEMA Design Code	B KVA Code	G	Starting Current	328 A
Service Factor (S.F.)	1.15	No-load Current	21.1 A	
NEMA Nom. Eff.	93 Power Factor	83	Line-line Res. @ 25°C	0.143 Ω
Rating - Duty	40C AMB-CONT	Temp. Rise @ Rated Load	41°C	
S.F. Amps		Temp. Rise @ S.F. Load	50°C	
		Locked-rotor Power Factor	31.9	
		Rotor inertia	4.13 LB-FT ²	

Load Characteristics 400 V, 60 Hz, 40 HP

% of Rated Load	25	50	75	100	125	150	S.F.
Power Factor	47	70	79	83	84	84	84
Efficiency	88.9	92.9	93.4	93.3	93	92.3	93.1
Speed	1793	1787	1780	1772	1764	1755	1767
Line amperes	26	33.7	43.9	55.8	68.7	82.9	63.5

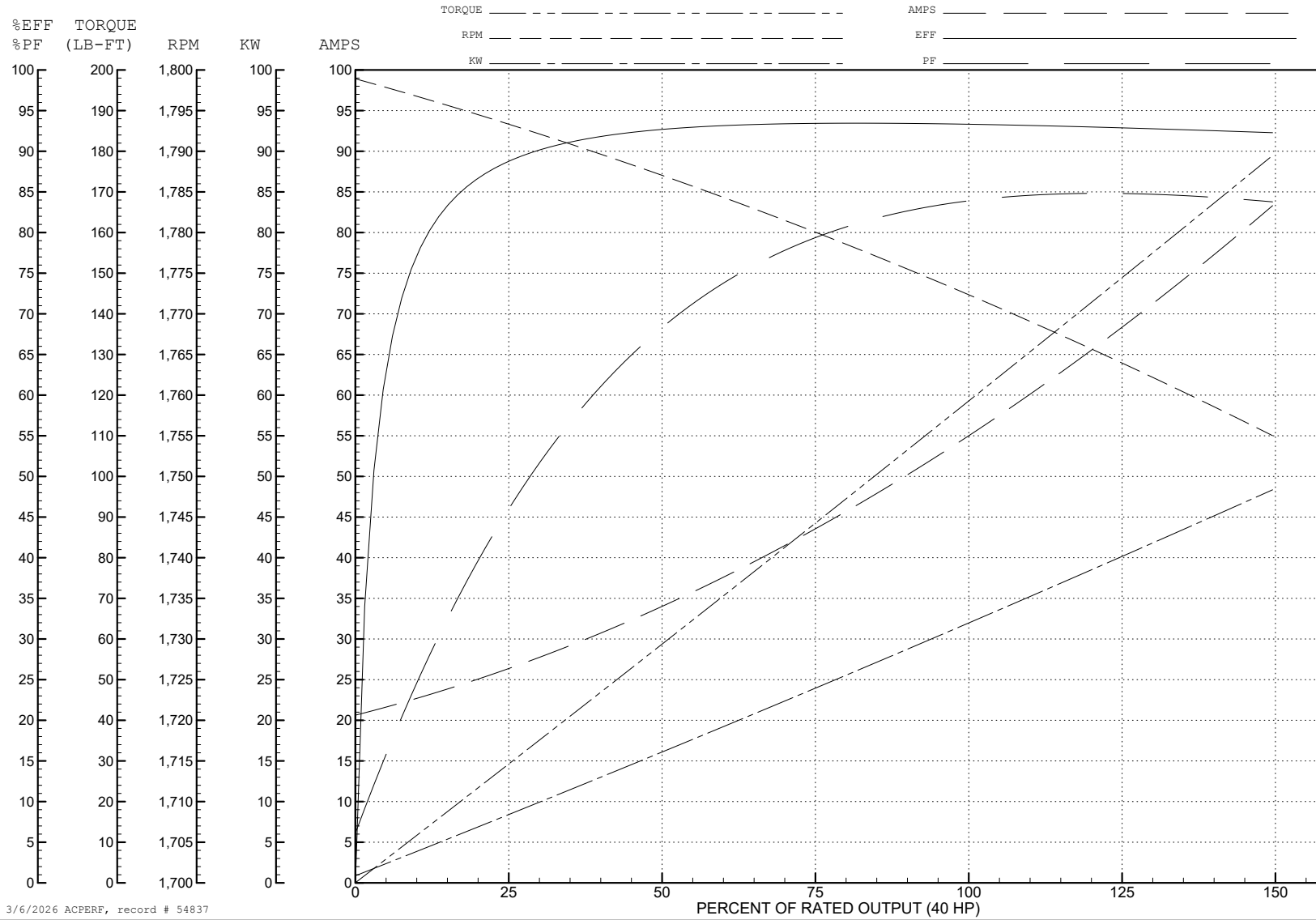
ABB Motors and Mechanical Inc.

WINDING # 40WG327

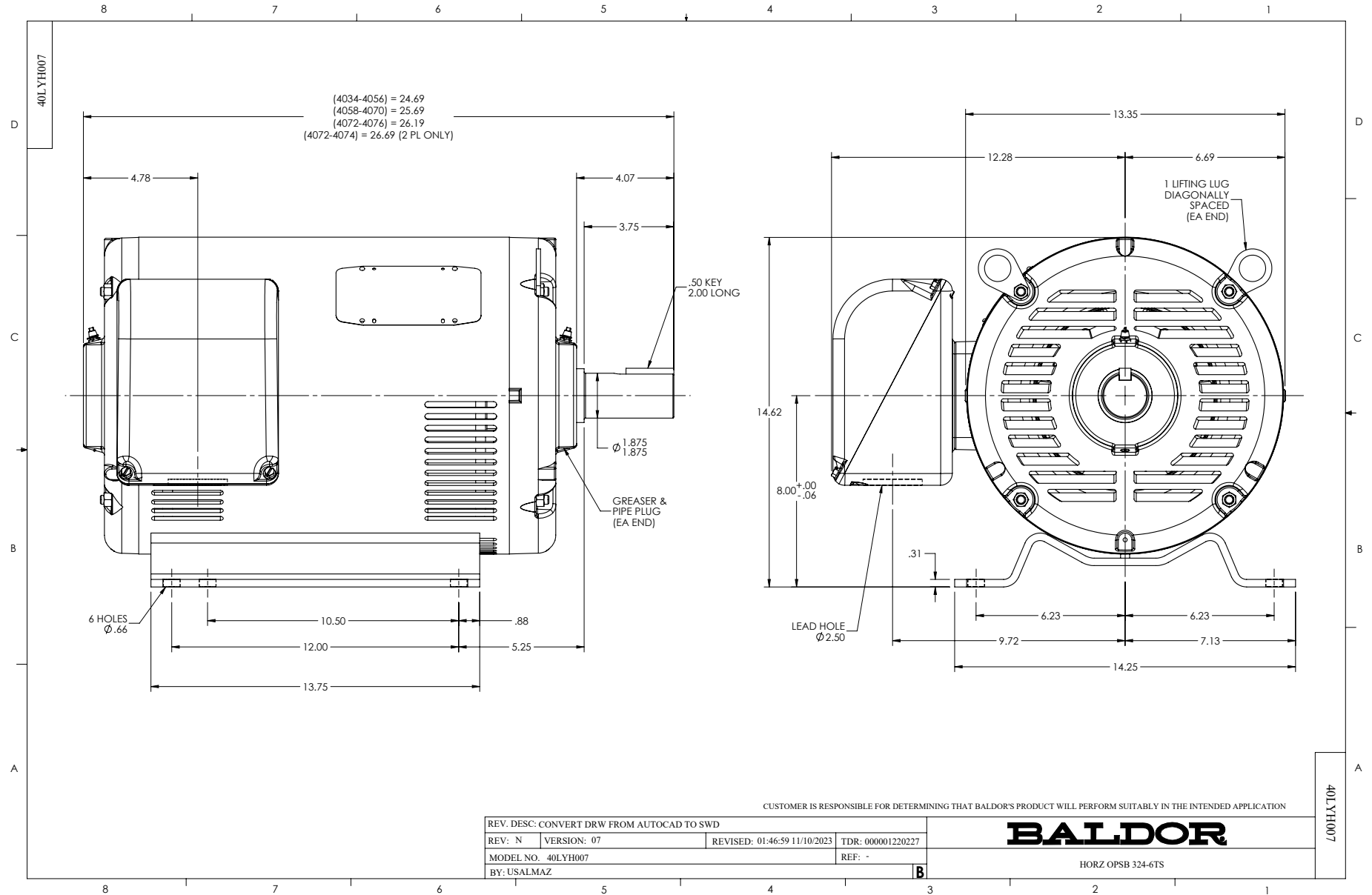
Typical performance - not guaranteed values.

40 HP 3 PH 60 HZ 1770 RPM 400 V 4052M

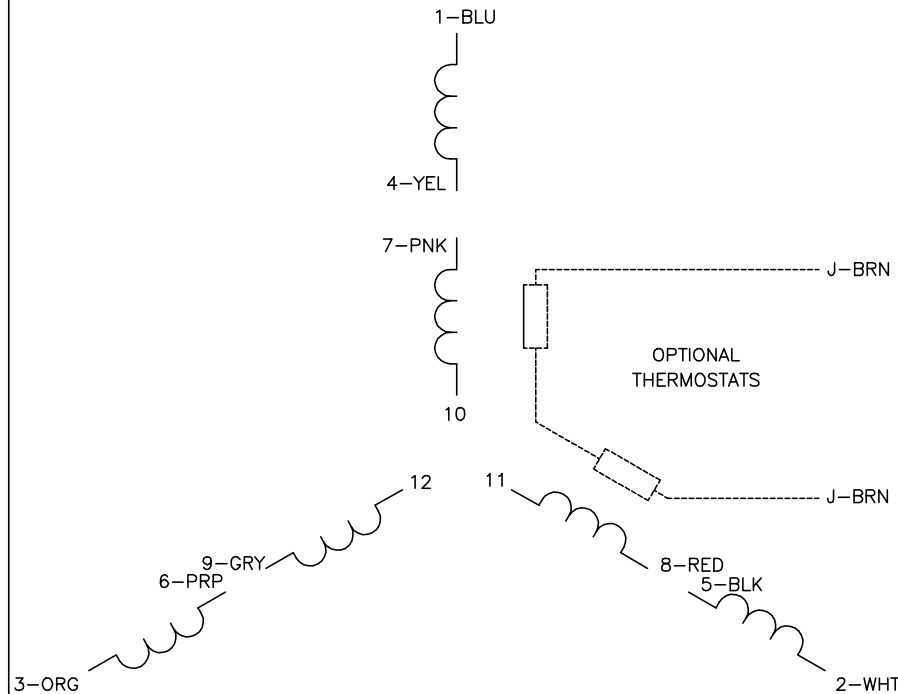
TORQUES (LB-FT): PO=323 PU=157 LR=195 LRA=328



3/6/2026 ACPERF, record # 54837

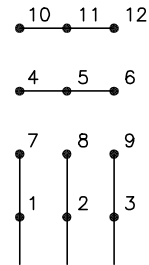


CD0104



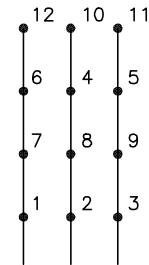
LOW VOLTAGE

START (2Y)



LINE

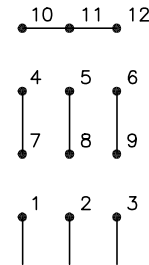
RUN (2D)



LINE

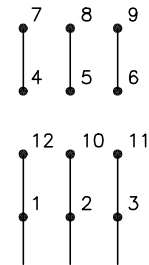
HIGH VOLTAGE

START (1Y)



LINE

RUN (1D)



LINE

NOTES:

1. INTERCHANGE ANY TWO LINE LEADS TO REVERSE ROTATION.
2. OPTIONAL THERMOSTATS ARE PROVIDED WHEN SPECIFIED.
3. ACTUAL NUMBER OF INTERNAL PARALLEL CIRCUITS MAY BE A MULTIPLE OF THOSE SHOWN ABOVE.
4. LEAD COLORS ARE OPTIONAL. LEADS MUST ALWAYS BE NUMBERED AS SHOWN.

CD0104

REV. DESC: ADD CLASS CONN00000007		
REV. LTR: D	VERSION: 01	TDR: 000001099922
FILE: \AAA\00008\377	REVISED: 09:02:55 02/19/2019	BY: ENBRIRO
MTL: -		© □

BALDOR - RELIANCE®

3PH, DV, 12 LEADS, Y START/D RUN

SH 1 of 1