

BALDOR • RELIANCE

Customer information packet

FPM2535TS-2/4

30HP, 1770RPM, 3PH, 60HZ, 286TS, 4052M, ODP, F1

A

Copyright © All product information within this document is subject to ABB Motors and Mechanical Inc. copyright © protection, unless otherwise noted.

3/6/2026 11:18:55 AM

Specifications

Enclosure	ODP
Frame	286TS
Frame Material	Steel
Frequency	60.00 Hz
Motor Letter Type	Three Phase
Output @ Frequency	30.000 HP @ 60 HZ
Phase	3
Synchronous Speed @ Frequency	1800 RPM @ 60 HZ
Voltage @ Frequency	200.0 V @ 60 HZ 400.0 V @ 60 HZ
Agency Approvals	CSA EEV UL
Ambient Temperature	40 °C
Auxiliary Box	NO AUXILLARY BOX
Auxiliary Box Lead Termination	None
Base Indicator	Rigid
Bearing Grease Type	Polyrex EM (-20F +300F)
Blower	None
Current @ Voltage	41.000 A @ 400.0 V 82.000 A @ 200.0 V
Design Code	B
Drip Cover	No Drip Cover
Duty Rating	CONT
Efficiency @ 100% Load	92.4 %
Electrically Isolated Bearing	Not Electrically Isolated
Feedback Device	NO FEEDBACK
Front Face Code	Standard
Front Shaft Indicator	None
Heater Indicator	No Heater
High Voltage Full Load Amps	41.0 a
Insulation Class	F
Inverter Code	Not Inverter

Part detail

Revision	H
Type	AC
Mech. spec.	40G49
Base	
Status	PRD/A
Elec. spec.	40WGX330
Layout	40LYG049
Eff. date	07-24-2023
CD Diagram	CD0104
Poles	04
Leads	12#10
Proprietary	False
Created date	01-13-2016

KVA Code	G
Lifting Lugs	Standard Lifting Lugs
Locked Bearing Indicator	No Locked Bearing
Motor Lead Exit	Ko Box
Motor Lead Quantity/Wire Size	12 @ 10 AWG
Motor Lead Termination	Flying Leads
Motor Standards	NEMA
Motor Type	4052M
Mounting Arrangement	F1
Number of Poles	4
Overall Length	23.69 IN
Power Factor	84
Product Family	Fire Pump Motor
Pulley End Bearing Type	Ball
Pulley Face Code	Standard
Pulley Shaft Indicator	Standard
Rodent Screen	None
Service Factor	1.15
Shaft Diameter	1.625 IN
Shaft Extension Location	Pulley End
Shaft Ground Indicator	No Shaft Grounding
Shaft Rotation	Reversible
Shaft Slinger Indicator	No Slinger
Speed	1770 rpm
Speed Code	Single Speed
Starting Method	Wye Start - Delta Run
Thermal Device - Bearing	None
Thermal Device - Winding	None
Vibration Sensor Indicator	No Vibration Sensor
Winding Thermal 1	None
Winding Thermal 2	None

Nameplate

NP3454L

CAT.NO.	FPM2535TS-2/4	CUST P/N		I.P.	23
SPEC.	40G049X330H2	SER.NO.		FRAME	286TS
HZ	60	HP	30	RPM	1770
VOLTS	200/400	CODE	G	VOLTS	
AMPS	82/41	DES	B	AMPS	
EFF	92.4	SER.F.	1.15	PF	84
RATING	40C AMB-CONT	DE BRG	6311	GREASE	POLYREX EM
BLANK		ODE BRG	6309	MTR. WT.	375
		CLASS	F	PH	3
		ENCL	ODP	CC	010A
HTR-VOLTS		HTR-AMPS		HTR-WATTS	

Parts list

Part number	Description	Quantity
SA313508	SA 40G049X330H2	1.000 ea
RA300970	RA 40G049X330H2	1.000 ea
HA6361A01	LIFTING LUG FOR 37, 39 & 40 FRAME ZINC	2.000 ea
HA6017	CAST ADAPTER, 40,42 KOBX	1.000 ea
19XW3118A12	.31-18 X .75 HEX WASHER HEAD TAPTITE II	2.000 ea
HW1001A31	LOCKWASHER 5/16, ZINC PLT.591 OD, .319 I	2.000 ea
WD1000B25	GND LUG, BURNDY L125HP OR T&B L125HP-BB	1.000 ea
19XW3118G08	.31-18X.50,HEX WSHR HD,TAPTITE 2,GREEN	1.000 ea
10CB3000SP	KOBX, CAST W/2.00 LEAD HOLE	1.000 ea
19XW3118A12	.31-18 X .75 HEX WASHER HEAD TAPTITE II	4.000 ea
HW1001A31	LOCKWASHER 5/16, ZINC PLT.591 OD, .319 I	4.000 ea
40EP3200A02	STD FREP OPEN 309 BRG	1.000 ea
HW5100A11	W3917-042 WVY WSHR (WB)	1.000 ea
40EP3200B05	STD PUEP OPEN 311 BRG	1.000 ea
XY3816A12	3/8-16 FINISHED NUT W/SERRATIONS	8.000 ea
10CB3500SP	CONDUIT BOX LID, CAST	1.000 ea
51XW2520A12	.25-20 X .75, TAPTITE II, HEX WSHR SLTD	4.000 ea
HW2501G17	KEY, 3/8 SQ X 1.875	1.000 ea
HW4500A03	GREASE FITTING, .125 NPT 1610(ALEMITE) 8	1.000 ea
HW4500A20	1/8NPT SL PIPE PLUG	1.000 ea
HA4051A00	PLASTIC CAP FOR GREASE FITTING	1.000 ea
MG1025R44	WILKOFAS, 784.109, CARMINE RED #3002	0.050 ga
MJ1000A02	GREASE, POLYREX EM EXXON	0.050 lb
HW4500A03	GREASE FITTING, .125 NPT 1610(ALEMITE) 8	1.000 ea
HW4500A20	1/8NPT SL PIPE PLUG	1.000 ea
HA4051A00	PLASTIC CAP FOR GREASE FITTING	1.000 ea
85XU0407S04	4X1/4 U DRIVE PIN STAINLESS	2.000 ea
40AD2002A01	LEXAN BAFFLE 40 FR OPEN	1.000 ea
40AD2002A01	LEXAN BAFFLE 40 FR OPEN	1.000 ea
HA3154A04	THRUBOLT STUD 3/8-16 X 18.750	4.000 ea
LB1624	COMBINED WARNING LABEL, ISO/ANSI PICTOGR	1.000 ea

LC0104A01	CONNECTION DIAGRAM	1.000 ea
NP3454L	ALUM FIRE PUMP MOTOR(LEGACY/BALDOR ONLY)	1.000 ea
40PA1000	PACKAGING GROUP	1.000 ea
MN416A01	TAG-INSTAL-MAINT no wire (2500 bx)11/22	1.000 ea

AC Induction Motor Performance Data

Record # 54899

Typical performance - not guaranteed values

Winding: 40WGX330-R001		Type: 4052M		Enclosure: OPEN	
Nameplate Data			400 V, 60 Hz: High Voltage Connection		
Rated Output (HP)	30	Full Load Torque	89.5 LB-FT		
Volts	200/400	Start Configuration	direct on line		
Full Load Amps	82/41	Breakdown Torque	258 LB-FT		
R.P.M.	1770	Pull-up Torque	113 LB-FT		
Hz	60	Locked-rotor Torque	143 LB-FT		
NEMA Design Code	B	Starting Current	243 A		
Service Factor (S.F.)	1.15	No-load Current	14.9 A		
NEMA Nom. Eff.	92.4	Line-line Res. @ 25°C	0.2 Ω		
Rating - Duty	40C AMB-CONT	Temp. Rise @ Rated Load	32°C		
S.F. Amps		Temp. Rise @ S.F. Load	40°C		
		Locked-rotor Power Factor	31.6		
		Rotor inertia	4.14 LB-FT ²		

Load Characteristics 400 V, 60 Hz, 30 HP

% of Rated Load	25	50	75	100	125	150	S.F.
Power Factor	51	72	81	84	85	85	85
Efficiency	90.5	93.3	93.9	93.5	92.9	91.9	93.2
Speed	1793	1787	1780	1773	1765	1756	1768
Line amperes	17.9	24	32	41.3	51.1	62	47.2

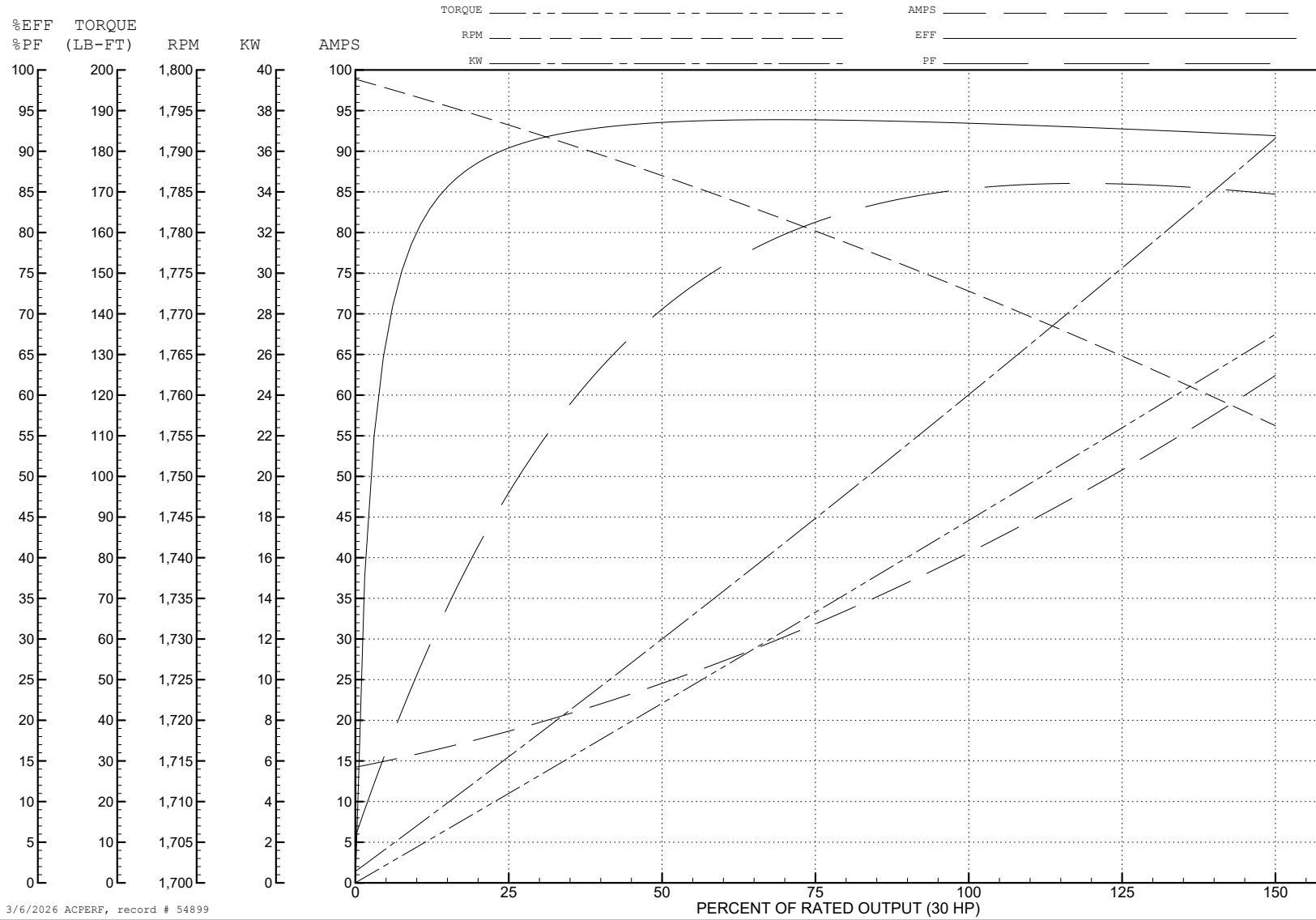
ABB Motors and Mechanical Inc.

WINDING # 40WGx330

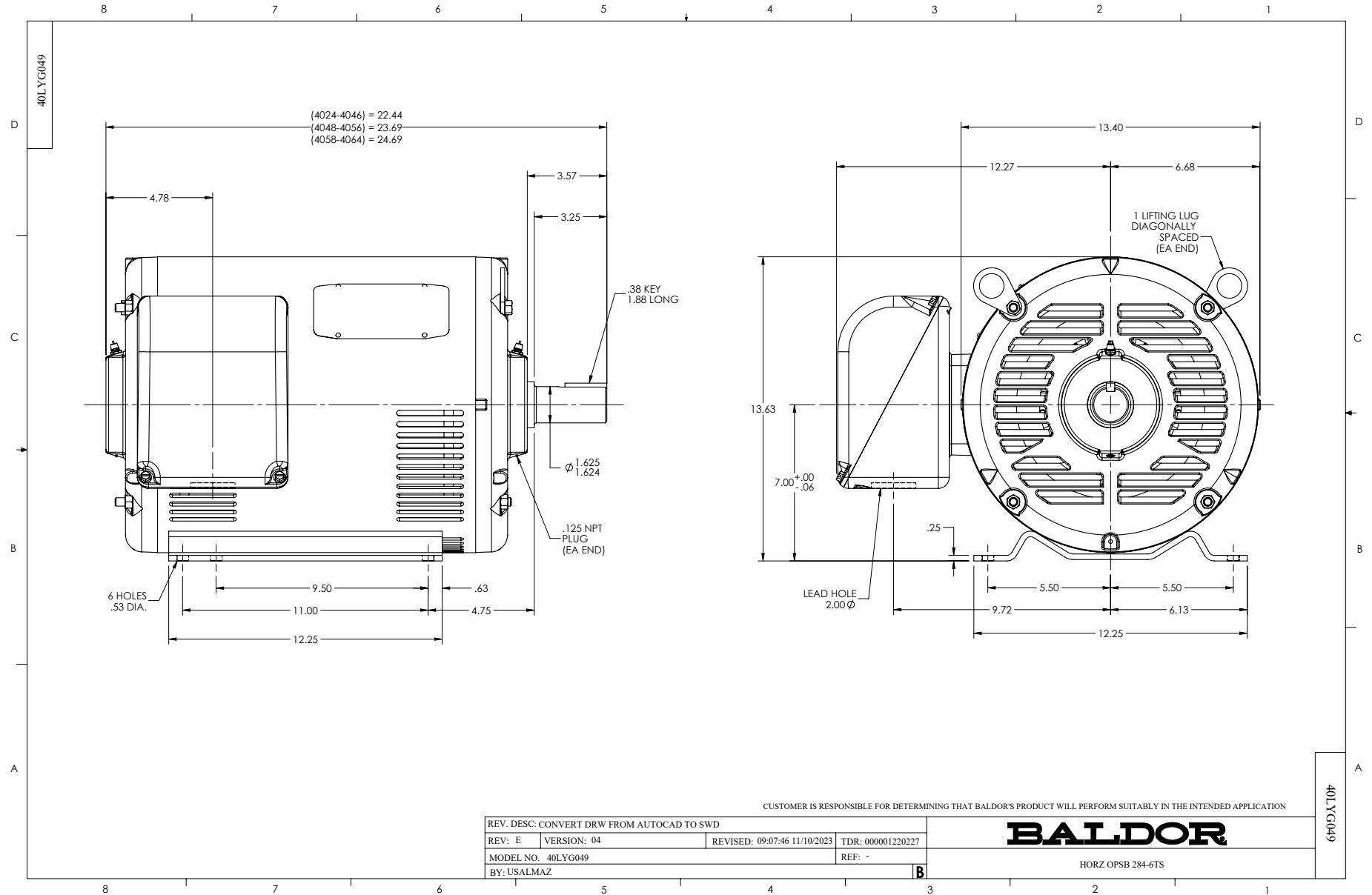
Typical performance - not guaranteed values.

30 HP 3 PH 60 HZ 1770 RPM 400 V 4052M

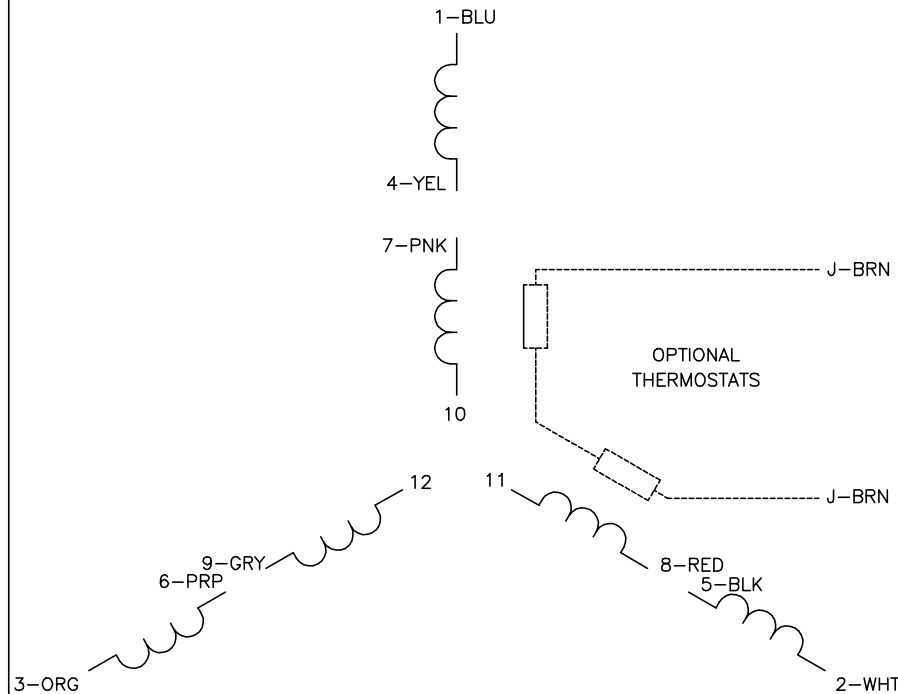
TORQUES (LB-FT): PO=258 PU=113 LR=143 LRA=243



3/6/2026 ACPERF, record # 54899

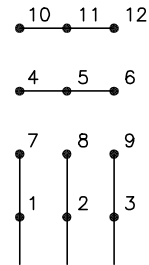


CD0104



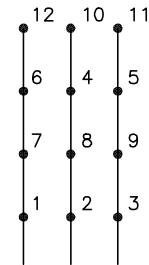
LOW VOLTAGE

START (2Y)



LINE

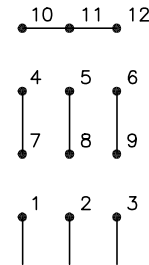
RUN (2D)



LINE

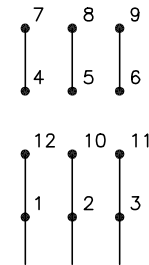
HIGH VOLTAGE

START (1Y)



LINE

RUN (1D)



LINE

NOTES:

1. INTERCHANGE ANY TWO LINE LEADS TO REVERSE ROTATION.
2. OPTIONAL THERMOSTATS ARE PROVIDED WHEN SPECIFIED.
3. ACTUAL NUMBER OF INTERNAL PARALLEL CIRCUITS MAY BE A MULTIPLE OF THOSE SHOWN ABOVE.
4. LEAD COLORS ARE OPTIONAL. LEADS MUST ALWAYS BE NUMBERED AS SHOWN.

CD0104

REV. DESC: ADD CLASS CONN00000007		
REV. LTR: D	VERSION: 01	TDR: 000001099922
FILE: \AAA\00008\377	REVISED: 09:02:55 02/19/2019	BY: ENBRIRO
MTL: -	© □	

BALDOR - RELIANCE®

3PH, DV, 12 LEADS, Y START/D RUN

SH 1 of 1