

**BALDOR • RELIANCE**

---

# Customer information packet

## FPM2534T-2/4

30HP, 3510RPM, 3PH, 60HZ, 284TS, 3936M, ODP, F1

A

Class -

Division - Not Applicable

## Specifications

Enclosure	ODP
Frame	284TS
Frame Material	Steel
Frequency	60.00 Hz
Haz Area Division	Not Applicable
Motor Letter Type	Three Phase
Output @ Frequency	30.000 HP @ 60 HZ
Phase	3
Synchronous Speed @ Frequency	3600 RPM @ 60 HZ
Voltage @ Frequency	200.0 V @ 60 HZ 400.0 V @ 60 HZ
Agency Approvals	CSA EEV UL
Ambient Temperature	40 °C
Auxiliary Box	NO AUXILLARY BOX
Auxiliary Box Lead Termination	None
Base Indicator	Rigid
Bearing Grease Type	Polyrex EM (-20F +300F)
Blower	None
Current @ Voltage	80.000 A @ 200.0 V 40.000 A @ 400.0 V
Design Code	B
Drip Cover	No Drip Cover
Duty Rating	CONT
Efficiency @ 100% Load	91.0 %
Electrically Isolated Bearing	Not Electrically Isolated
Feedback Device	NO FEEDBACK
Front Face Code	Standard
Front Shaft Indicator	None
Heater Indicator	No Heater
High Voltage Full Load Amps	40.0 a
Insulation Class	F

## Part detail

Revision	M
Type	AC
Mech. spec.	39R082
Base	
Status	PRD/A
Elec. spec.	39WGX943
Layout	39LYR082
Eff. date	11-14-2023
CD Diagram	CD0104
Poles	02
Leads	12#10
Proprietary	False
Created date	01-11-2016

<b>Inverter Code</b>	Not Inverter
<b>KVA Code</b>	G
<b>Lifting Lugs</b>	Standard Lifting Lugs
<b>Locked Bearing Indicator</b>	No Locked Bearing
<b>Motor Lead Exit</b>	Ko Box
<b>Motor Lead Quantity/Wire Size</b>	12 @ 10 AWG
<b>Motor Lead Termination</b>	Flying Leads
<b>Motor Standards</b>	NEMA
<b>Motor Type</b>	3936M
<b>Mounting Arrangement</b>	F1
<b>Number of Poles</b>	2
<b>Overall Length</b>	22.06 IN
<b>Power Factor</b>	89
<b>Product Family</b>	Fire Pump Motor
<b>Pulley End Bearing Type</b>	Ball
<b>Pulley Face Code</b>	Standard
<b>Pulley Shaft Indicator</b>	Standard
<b>Rodent Screen</b>	None
<b>Service Factor</b>	1.15
<b>Shaft Diameter</b>	1.625 IN
<b>Shaft Extension Location</b>	Pulley End
<b>Shaft Ground Indicator</b>	No Shaft Grounding
<b>Shaft Rotation</b>	Reversible
<b>Shaft Slinger Indicator</b>	No Slinger
<b>Speed</b>	3510 rpm
<b>Speed Code</b>	Single Speed
<b>Starting Method</b>	Wye Start - Delta Run
<b>Thermal Device - Bearing</b>	None
<b>Thermal Device - Winding</b>	None
<b>Vibration Sensor Indicator</b>	No Vibration Sensor
<b>Winding Thermal 1</b>	None
<b>Winding Thermal 2</b>	None

**Nameplate**

**NP3454L**

<b>CAT.NO.</b>	FPM2534T-2/4	<b>CUST P/N</b>		<b>I.P.</b>	23
<b>SPEC.</b>	39R082X943H2	<b>SER.NO.</b>		<b>FRAME</b>	284TS
<b>HZ</b>	60	<b>HP</b>	30	<b>RPM</b>	3510
<b>VOLTS</b>	200/400	<b>CODE</b>	G	<b>VOLTS</b>	
<b>AMPS</b>	80/40	<b>DES</b>	B	<b>AMPS</b>	
<b>EFF</b>	91	<b>SER.F.</b>	1.15	<b>PF</b>	89
<b>RATING</b>	40C AMB-CONT	<b>DE BRG</b>	6311	<b>GREASE</b>	POLYREX EM
<b>BLANK</b>		<b>ODE BRG</b>	6208	<b>MTR. WT.</b>	224
		<b>CLASS</b>	F	<b>PH</b>	3
		<b>ENCL</b>	ODP	<b>CC</b>	010A
<b>HTR-VOLTS</b>		<b>HTR-AMPS</b>		<b>HTR-WATTS</b>	

## Parts list

Part number	Description	Quantity
SA313332	SA 39R082X943H2	1.000 ea
RA300789	RA 39R082X943H2	1.000 ea
HA6361A01	LIFTING LUG FOR 37, 39 & 40 FRAME ZINC	2.000 ea
09CB2800A01	ADAPTER MACH FOR 09CB3000 AND 10CB3000	1.000 ea
19XW3118A08	.31-18 X .50 HEX WASHER HEAD TAPTITE II	2.000 ea
HW1001A31	LOCKWASHER 5/16, ZINC PLT.591 OD, .319 I	2.000 ea
09CB3003	CB W/1.75" DIA LD HL - 37, 39, 307 & 309	1.000 ea
51XW2520A12	.25-20 X .75, TAPTITE II, HEX WSHR SLTD	4.000 ea
WD1000B16	T&B CX70TN OR L70P TERMINAL LUG	1.000 ea
59XW2520G07	.25-20X.44,HEX SER WSHR,TAPTITE 2,GREEN	1.000 ea
39EP3200A01SP	FR/PU ENDPLATE, MACH	1.000 ea
HW5100A08	W3118-035 WVY WSHR (WB)	1.000 ea
39EP3202A01	ENDPLATE MACH	1.000 ea
XY3816A12	3/8-16 FINISHED NUT W/SERRATIONS	8.000 ea
09CB3501SP	CONDUIT BOX LID FOR 09CB3001 & 09CB3002	1.000 ea
51XW2520A12	.25-20 X .75, TAPTITE II, HEX WSHR SLTD	2.000 ea
HW2501G17	KEY, 3/8 SQ X 1.875	1.000 ea
39AD2002A01	BAFFLE PLATE 39 OPEN, SLOTTED BAND MTRS	1.000 ea
HW4500A03	GREASE FITTING, .125 NPT 1610(ALEMITE) 8	1.000 ea
HW4500A20	1/8NPT SL PIPE PLUG	1.000 ea
HA4051A00	PLASTIC CAP FOR GREASE FITTING	1.000 ea
MJ1000A02	GREASE, POLYREX EM EXXON	0.030 lb
39AD2002A01	BAFFLE PLATE 39 OPEN, SLOTTED BAND MTRS	1.000 ea
HW4500A03	GREASE FITTING, .125 NPT 1610(ALEMITE) 8	1.000 ea
HW4500A20	1/8NPT SL PIPE PLUG	1.000 ea
HA4051A00	PLASTIC CAP FOR GREASE FITTING	1.000 ea
HA3154A03	STUD, 3/8-16 X 17.75	4.000 ea
MG1025R44	WILKOFAS, 784.109, CARMINE RED #3002	0.050 ga
85XU0407S04	4X1/4 U DRIVE PIN STAINLESS	2.000 ea
LB1624	COMBINED WARNING LABEL, ISO/ANSI PICTOGR	1.000 ea
LC0104A01	CONNECTION DIAGRAM	1.000 ea

NP3454L	ALUM FIRE PUMP MOTOR(LEGACY/BALDOR ONLY)	1.000 ea
40PA1000	PACKAGING GROUP	1.000 ea
MN416A01	TAG-INSTAL-MAINT no wire (2500 bx)11/22	1.000 ea
LD7020E12	LEAD SET, 10AWG, 12 LEAD, 20" LONG LEADS	1.000 ea

**AC Induction Motor Performance Data**

Record # 54831

Typical performance - not guaranteed values

Winding: 39WGX943-R001		Type: 3936M	Enclosure: OPSB	
<b>Nameplate Data</b>			<b>400 V, 60 Hz: High Voltage Connection</b>	
Rated Output (HP)	30	Full Load Torque	44.9 LB-FT	
Volts	200/400	Start Configuration	direct on line	
Full Load Amps	80/40	Breakdown Torque	157 LB-FT	
R.P.M.	3510	Pull-up Torque	48 LB-FT	
Hz	60 Phase	3	Locked-rotor Torque	67.8 LB-FT
NEMA Design Code	B KVA Code	G	Starting Current	248 A
Service Factor (S.F.)		1.15	No-load Current	12 A
NEMA Nom. Eff.	91 Power Factor	89	Line-line Res. @ 25°C	0.287 Ω
Rating - Duty	40C AMB-CONT		Temp. Rise @ Rated Load	37°C
S.F. Amps			Temp. Rise @ S.F. Load	46°C
			Locked-rotor Power Factor	30.4
			Rotor inertia	0.92 LB-FT <sup>2</sup>

**Load Characteristics 400 V, 60 Hz, 30 HP**

% of Rated Load	25	50	75	100	125	150	S.F.
Power Factor	61	81	87	89	89	88	89
Efficiency	89.3	92.1	92.4	91.5	90.2	88.5	90.7
Speed	3578	3556	3533	3509	3482	3451	3493
Line amperes	15.1	21.9	30.4	39.6	49.7	61.1	45.7

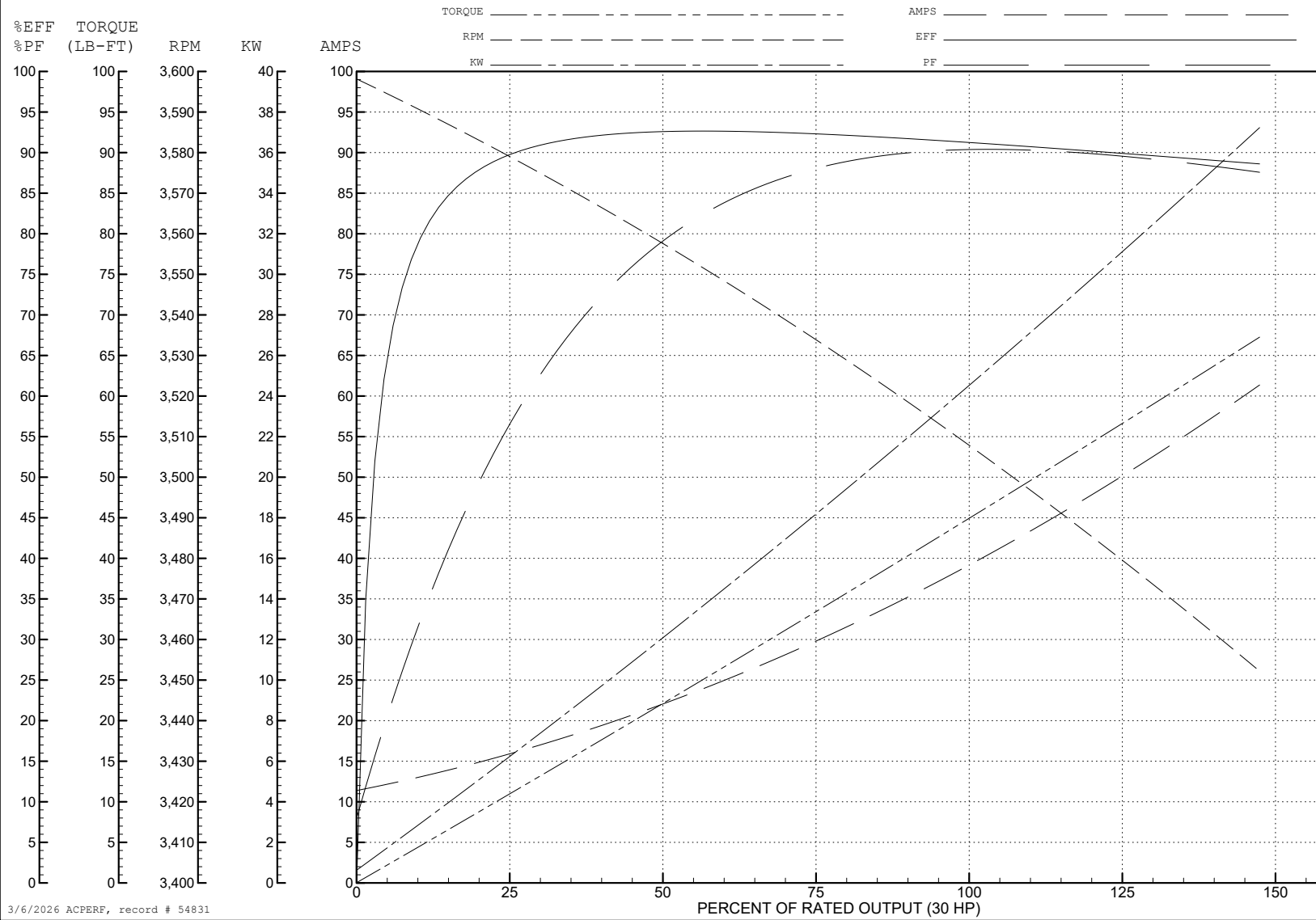
ABB Motors and Mechanical Inc.

WINDING # 39WGX943

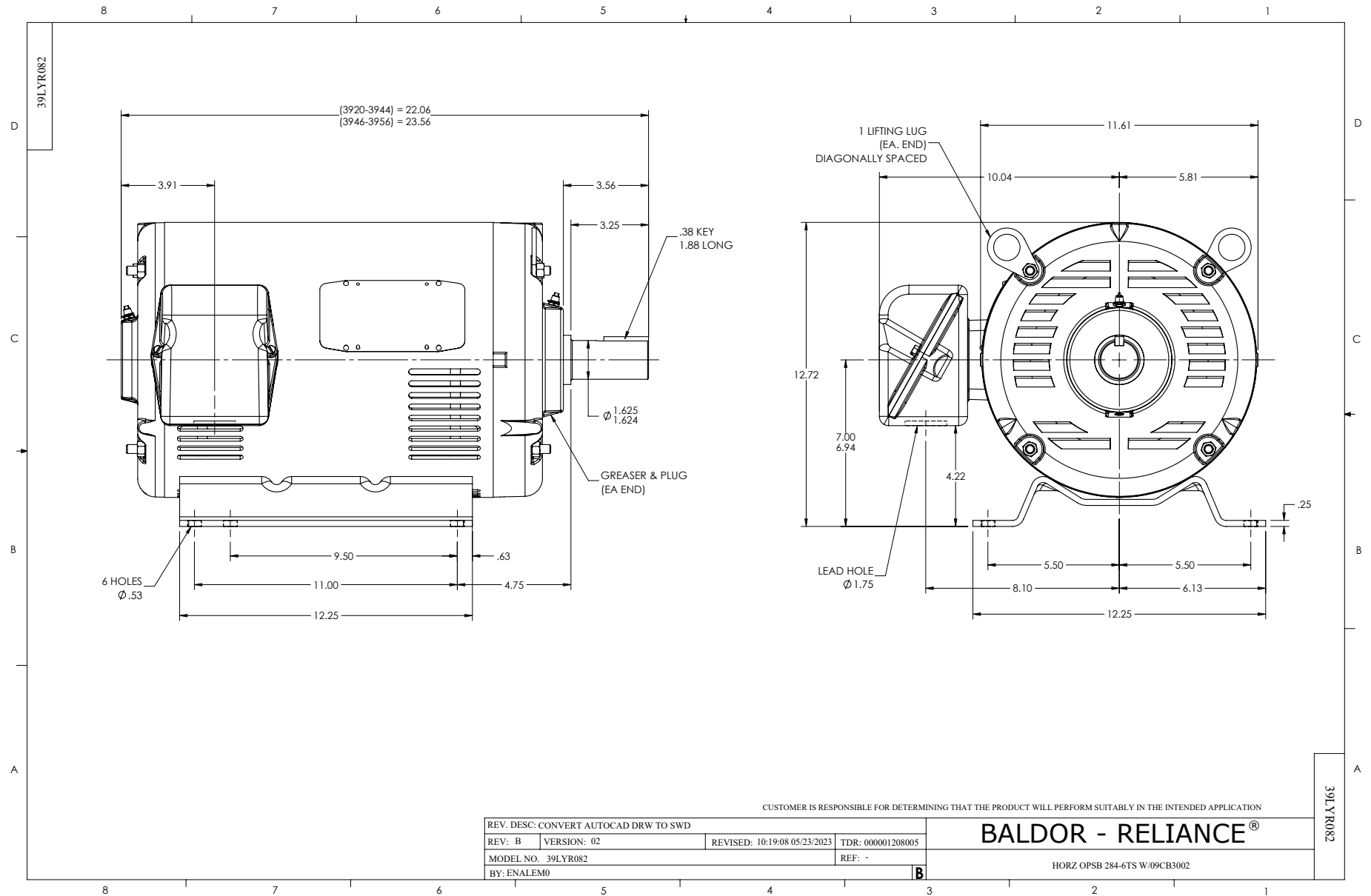
30 HP 3 PH 60 HZ 3510 RPM 400 V 3936M

Typical performance - not guaranteed values.

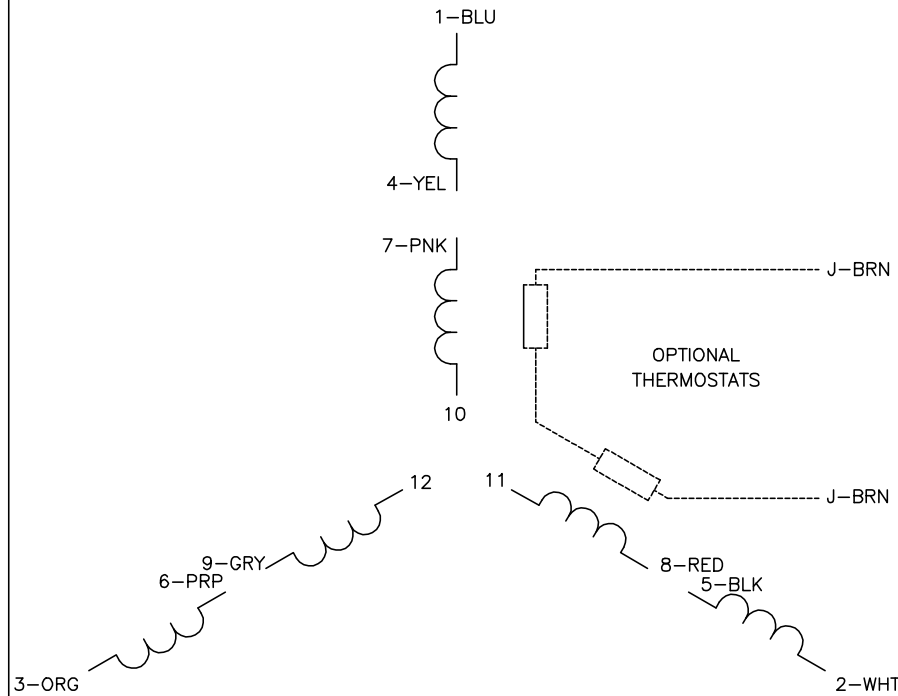
TORQUES (LB-FT): PO=157 PU=48 LR=67.8 LRA=248



3/6/2026 ACPERF, record # 54831

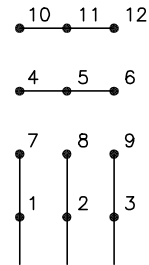


CD0104



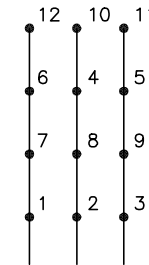
**LOW VOLTAGE**

START (2Y)



LINE

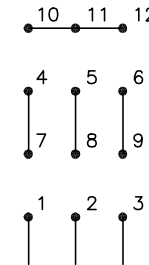
RUN (2D)



LINE

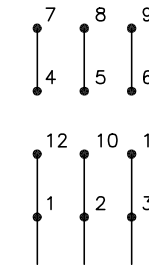
**HIGH VOLTAGE**

START (1Y)



LINE

RUN (1D)



LINE

**NOTES:**

1. INTERCHANGE ANY TWO LINE LEADS TO REVERSE ROTATION.
2. OPTIONAL THERMOSTATS ARE PROVIDED WHEN SPECIFIED.
3. ACTUAL NUMBER OF INTERNAL PARALLEL CIRCUITS MAY BE A MULTIPLE OF THOSE SHOWN ABOVE.
4. LEAD COLORS ARE OPTIONAL. LEADS MUST ALWAYS BE NUMBERED AS SHOWN.

CD0104

REV. DESC: ADD CLASS CONN00000007		
REV. LTR: D	VERSION: 01	TDR: 000001099922
FILE: \AAA\00008\377	REVISED: 09:02:55 02/19/2019	BY: ENBRIRO
MTL: -	© □	

**BALDOR - RELIANCE®**

3PH, DV, 12 LEADS, Y START/D RUN

SH 1 of 1