



Customer information packet

FPM2531TS-2/4

25HP, 1760RPM, 3PH, 60HZ, 284TS, 3956M, ODP, F1

A

Class -

Division - Not Applicable

Specifications

Enclosure	ODP
Frame	284TS
Frame Material	Steel
Frequency	60.00 Hz
Haz Area Division	Not Applicable
Motor Letter Type	Three Phase
Output @ Frequency	25.000 HP @ 60 HZ
Phase	3
Synchronous Speed @ Frequency	1800 RPM @ 60 HZ
Voltage @ Frequency	200.0 V @ 60 HZ 400.0 V @ 60 HZ
Agency Approvals	CSA EEV UL
Ambient Temperature	40 °C
Auxiliary Box	NO AUXILLARY BOX
Auxiliary Box Lead Termination	None
Base Indicator	Rigid
Bearing Grease Type	Polyrex EM (-20F +300F)
Blower	None
Current @ Voltage	68.000 A @ 200.0 V 34.000 A @ 400.0 V
Design Code	B
Drip Cover	No Drip Cover
Duty Rating	CONT
Efficiency @ 100% Load	92.4 %
Electrically Isolated Bearing	Not Electrically Isolated
Feedback Device	NO FEEDBACK
Front Face Code	Standard
Front Shaft Indicator	None
Heater Indicator	No Heater
High Voltage Full Load Amps	34.0 a
Insulation Class	F

Part detail

Revision	K
Type	AC
Mech. spec.	39R082
Base	
Status	PRD/A
Elec. spec.	39WGX942
Layout	39LYR082
Eff. date	11-14-2023
CD Diagram	CD0104
Poles	04
Leads	12#10
Proprietary	False
Created date	01-11-2016

Inverter Code	Not Inverter
KVA Code	F
Lifting Lugs	Standard Lifting Lugs
Locked Bearing Indicator	No Locked Bearing
Motor Lead Exit	Ko Box
Motor Lead Quantity/Wire Size	12 @ 10 AWG
Motor Lead Termination	Flying Leads
Motor Standards	NEMA
Motor Type	3956M
Mounting Arrangement	F1
Number of Poles	4
Overall Length	23.56 IN
Power Factor	87
Product Family	Fire Pump Motor
Pulley End Bearing Type	Ball
Pulley Face Code	Standard
Pulley Shaft Indicator	Standard
Rodent Screen	None
Service Factor	1.15
Shaft Diameter	1.625 IN
Shaft Extension Location	Pulley End
Shaft Ground Indicator	No Shaft Grounding
Shaft Rotation	Reversible
Shaft Slinger Indicator	No Slinger
Speed	1760 rpm
Speed Code	Single Speed
Starting Method	Wye Start - Delta Run
Thermal Device - Bearing	None
Thermal Device - Winding	None
Vibration Sensor Indicator	No Vibration Sensor
Winding Thermal 1	None
Winding Thermal 2	None

Nameplate

NP3454L

CAT.NO.	FPM2531TS-2/4	CUST P/N		I.P.	23
SPEC.	39R082X942H2	SER.NO.		FRAME	284TS
HZ	60	HP	25	RPM	1760
VOLTS	200/400	CODE	F	VOLTS	
AMPS	68/34	DES	B	AMPS	
EFF	92.4	SER.F.	1.15	PF	87
RATING	40C AMB-CONT	DE BRG	6311	GREASE	POLYREX EM
BLANK		ODE BRG	6208	MTR. WT.	305
		CLASS	F	PH	3
		ENCL	ODP	CC	010A
HTR-VOLTS		HTR-AMPS		HTR-WATTS	

Parts list

Part number	Description	Quantity
SA313331	SA 39R082X942H2	1.000 ea
RA300788	RA 39R082X942H2	1.000 ea
HA6361A01	LIFTING LUG FOR 37, 39 & 40 FRAME ZINC	2.000 ea
09CB2800A01	ADAPTER MACH FOR 09CB3000 AND 10CB3000	1.000 ea
19XW3118A08	.31-18 X .50 HEX WASHER HEAD TAPTITE II	2.000 ea
HW1001A31	LOCKWASHER 5/16, ZINC PLT.591 OD, .319 I	2.000 ea
09CB3003	CB W/1.75" DIA LD HL - 37, 39, 307 & 309	1.000 ea
51XW2520A12	.25-20 X .75, TAPTITE II, HEX WSHR SLTD	4.000 ea
WD1000B16	T&B CX70TN OR L70P TERMINAL LUG	1.000 ea
59XW2520G07	.25-20X.44,HEX SER WSHR,TAPTITE 2,GREEN	1.000 ea
39EP3200A01SP	FR/PU ENDPLATE, MACH	1.000 ea
HW5100A08	W3118-035 WVY WSHR (WB)	1.000 ea
39EP3202A01	ENDPLATE MACH	1.000 ea
XY3816A12	3/8-16 FINISHED NUT W/SERRATIONS	8.000 ea
09CB3501SP	CONDUIT BOX LID FOR 09CB3001 & 09CB3002	1.000 ea
51XW2520A12	.25-20 X .75, TAPTITE II, HEX WSHR SLTD	2.000 ea
HW2501G17	KEY, 3/8 SQ X 1.875	1.000 ea
39AD2002A01	BAFFLE PLATE 39 OPEN, SLOTTED BAND MTRS	1.000 ea
HW4500A03	GREASE FITTING, .125 NPT 1610(ALEMITE) 8	1.000 ea
HW4500A20	1/8NPT SL PIPE PLUG	1.000 ea
HA4051A00	PLASTIC CAP FOR GREASE FITTING	1.000 ea
MJ1000A02	GREASE, POLYREX EM EXXON	0.030 lb
39AD2002A01	BAFFLE PLATE 39 OPEN, SLOTTED BAND MTRS	1.000 ea
HW4500A03	GREASE FITTING, .125 NPT 1610(ALEMITE) 8	1.000 ea
HW4500A20	1/8NPT SL PIPE PLUG	1.000 ea
HA4051A00	PLASTIC CAP FOR GREASE FITTING	1.000 ea
HA3159A06	THRUBOLT- .38-16 X 19.00 LONG STUD	4.000 ea
MG1025R44	WILKOFAS, 784.109, CARMINE RED #3002	0.050 ga
85XU0407S04	4X1/4 U DRIVE PIN STAINLESS	2.000 ea
LB1624	COMBINED WARNING LABEL, ISO/ANSI PICTOGR	1.000 ea
LC0104A01	CONNECTION DIAGRAM	1.000 ea

NP3454L	ALUM FIRE PUMP MOTOR(LEGACY/BALDOR ONLY)	1.000 ea
40PA1000	PACKAGING GROUP	1.000 ea
MN416A01	TAG-INSTAL-MAINT no wire (2500 bx)11/22	1.000 ea
LD7020E12	LEAD SET, 10AWG, 12 LEAD, 20" LONG LEADS	1.000 ea

AC Induction Motor Performance Data

Record # 54830

Typical performance - not guaranteed values

Winding: 39WGX942-R001		Type: 3956M		Enclosure: OPSB	
Nameplate Data			400 V, 60 Hz: High Voltage Connection		
Rated Output (HP)	25	Full Load Torque	75.1 LB-FT		
Volts	200/400	Start Configuration	direct on line		
Full Load Amps	68/34	Breakdown Torque	204 LB-FT		
R.P.M.	1760	Pull-up Torque	100 LB-FT		
Hz	60 Phase	3	Locked-rotor Torque	121 LB-FT	
NEMA Design Code	B KVA Code	F	Starting Current	200 A	
Service Factor (S.F.)	1.15	No-load Current	10.4 A		
NEMA Nom. Eff.	92.4 Power Factor	87	Line-line Res. @ 25°C	0.294 Ω	
Rating - Duty	40C AMB-CONT		Temp. Rise @ Rated Load	52°C	
S.F. Amps			Temp. Rise @ S.F. Load	65°C	
			Locked-rotor Power Factor	32.2	
			Rotor inertia	2.45 LB-FT ²	

Load Characteristics 400 V, 60 Hz, 25 HP

% of Rated Load	25	50	75	100	125	150	S.F.
Power Factor	57	77	84	87	87	87	87
Efficiency	91.8	93.6	93.4	92.5	91.2	89.6	91.8
Speed	1790	1781	1771	1760	1747	1732	1752
Line amperes	13.1	18.5	26	33.6	41.9	51.8	38.6

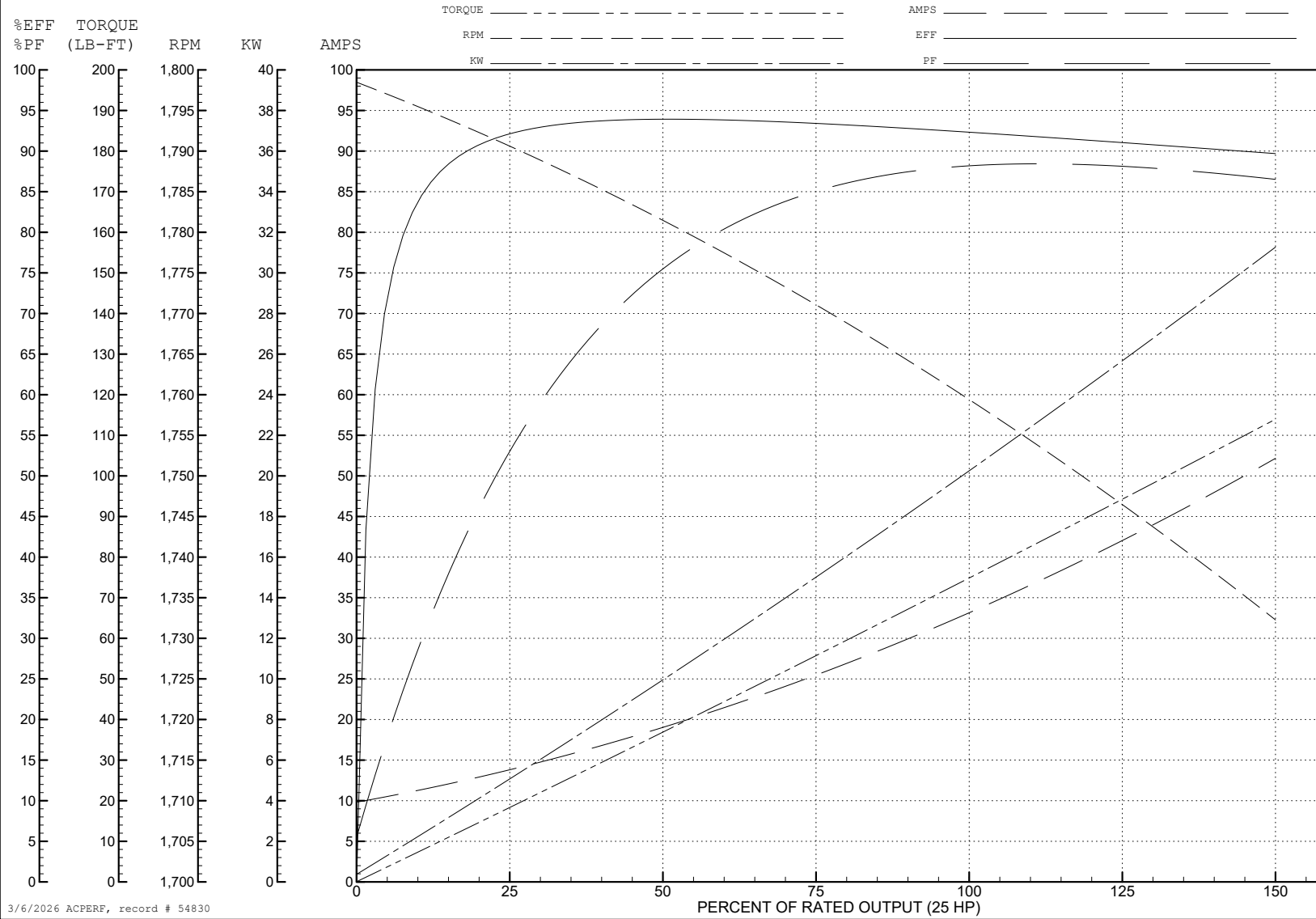
ABB Motors and Mechanical Inc.

WINDING # 39WGX942

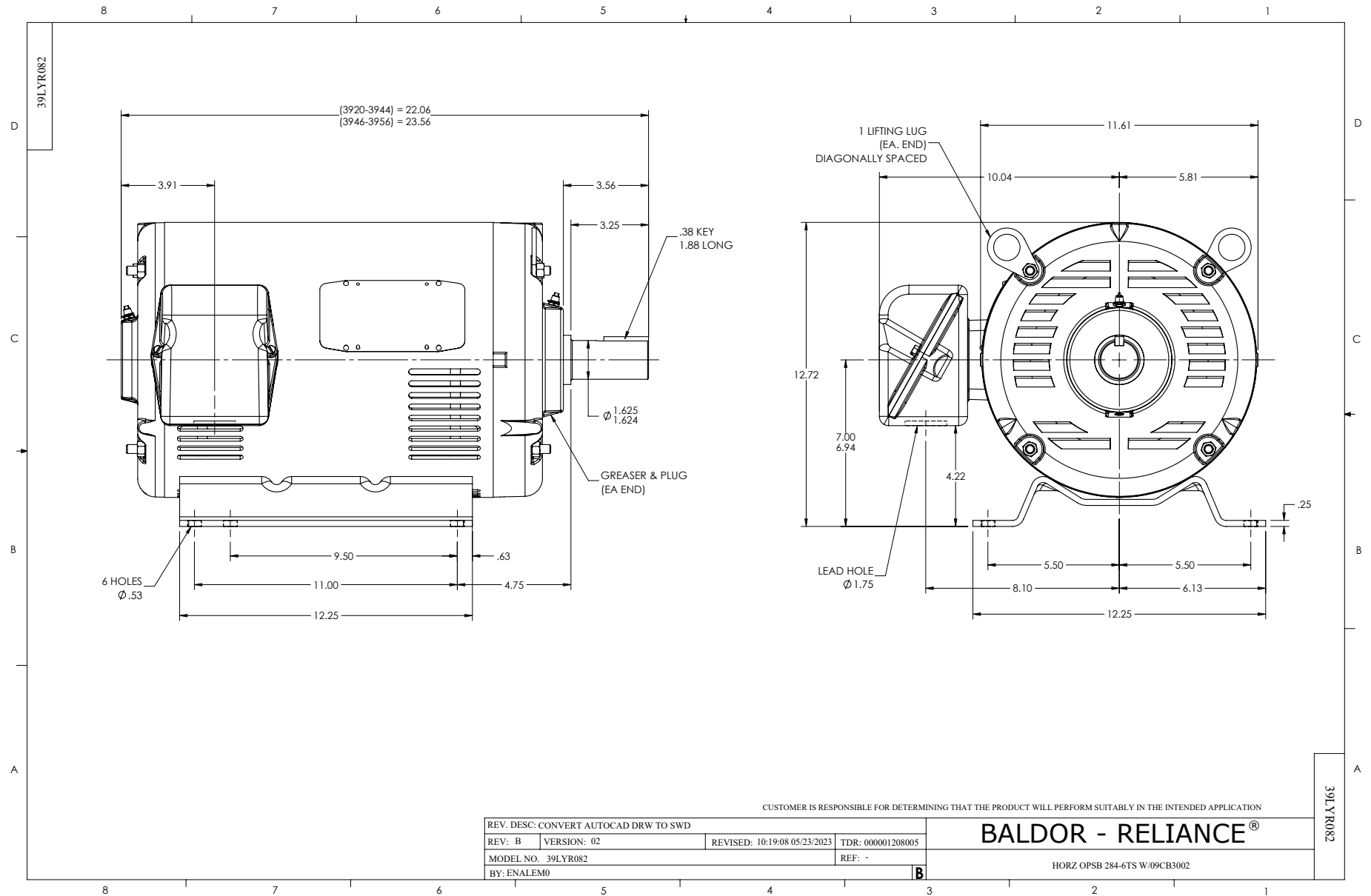
Typical performance - not guaranteed values.

25 HP 3 PH 60 HZ 1760 RPM 400 V 3956M

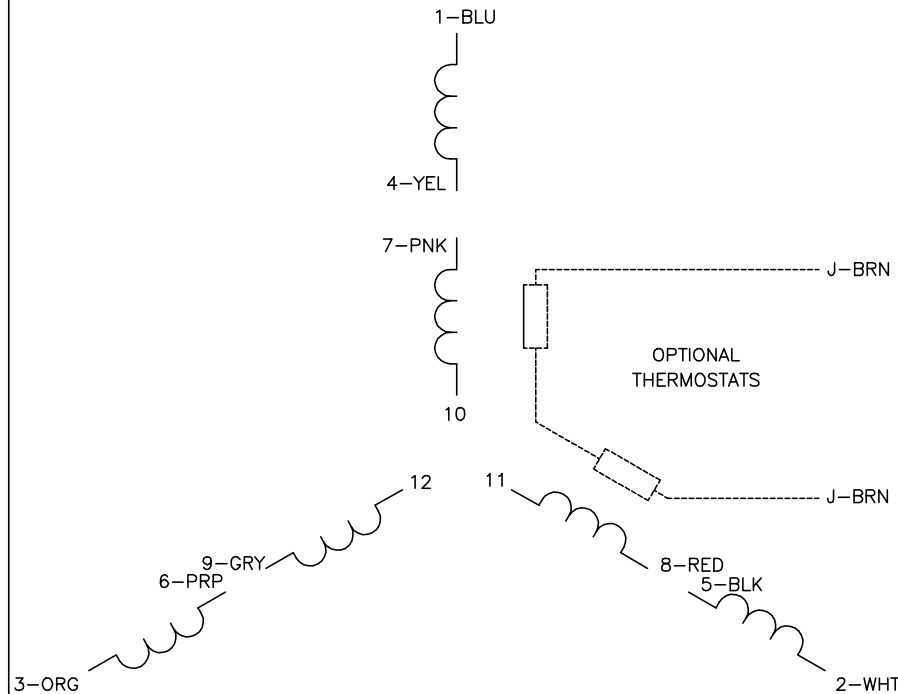
TORQUES (LB-FT): PO=204 PU=100 LR=121 LRA=200



3/6/2026 ACPERF, record # 54830

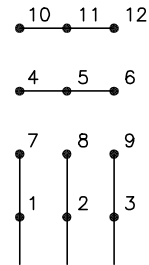


CD0104



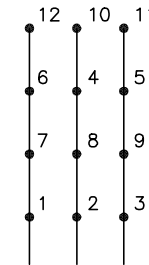
LOW VOLTAGE

START (2Y)



LINE

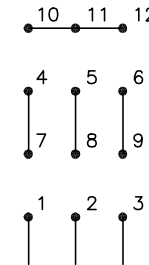
RUN (2D)



LINE

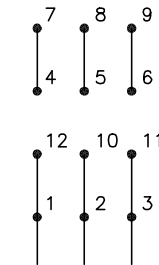
HIGH VOLTAGE

START (1Y)



LINE

RUN (1D)



LINE

NOTES:

1. INTERCHANGE ANY TWO LINE LEADS TO REVERSE ROTATION.
2. OPTIONAL THERMOSTATS ARE PROVIDED WHEN SPECIFIED.
3. ACTUAL NUMBER OF INTERNAL PARALLEL CIRCUITS MAY BE A MULTIPLE OF THOSE SHOWN ABOVE.
4. LEAD COLORS ARE OPTIONAL. LEADS MUST ALWAYS BE NUMBERED AS SHOWN.

CD0104

REV. DESC: ADD CLASS CONN00000007		
REV. LTR: D	VERSION: 01	TDR: 000001099922
FILE: \AAA\00008\377	REVISED: 09:02:55 02/19/2019	BY: ENBRIRO
MTL: -	© □	

BALDOR - RELIANCE®

3PH, DV, 12 LEADS, Y START/D RUN

SH 1 of 1