

BALDOR • RELIANCE

Customer information packet

ERM3157

2HP, 1770RPM, 3PH, 60HZ, 56H, 3526M, OPEN, F1, N

Class - None

Division - Not Applicable

Specifications

Enclosure	OPEN
Frame	56H
Frame Material	Steel
Frequency	60.00 Hz
Haz Area Class and Group	None
Haz Area Division	Not Applicable
Motor Letter Type	Three Phase
Output @ Frequency	2.000 HP @ 60 HZ
Phase	3
Synchronous Speed @ Frequency	1800 RPM @ 60 HZ
Voltage @ Frequency	460.0 V @ 60 HZ 230.0 V @ 60 HZ 208.0 V @ 60 HZ
Agency Approvals	CURUSEEV
Ambient Temperature	40 °C
Auxiliary Box	NO AUXILLARY BOX
Auxiliary Box Lead Termination	None
Base Indicator	Resilient
Bearing Grease Type	Polyrex EM (-20F +300F)
Blower	None
Current @ Voltage	5.800 A @ 230.0 V 5.800 A @ 208.0 V 2.900 A @ 460.0 V
Design Code	B
Drip Cover	No Drip Cover
Duty Rating	CONT
Efficiency @ 100% Load	86.5 %
Electrically Isolated Bearing	Not Electrically Isolated
Feedback Device	NO FEEDBACK
Front Shaft Indicator	None
Heater Indicator	No Heater
High Voltage Full Load Amps	2.9 a

Part detail

Revision	E
Type	AC
Mech. spec.	35F883
Base	
Status	PRD/A
Elec. spec.	35WGZ808
Layout	35LYF883
Eff. date	12-05-2024
CD Diagram	CD0005
Poles	04
Leads	9#18
Proprietary	False
Created date	01-10-2022

Insulation Class	F
Inverter Code	Not Inverter
KVA Code	L
Lifting Lugs	No Lifting Lugs
Locked Bearing Indicator	No Locked Bearing
Motor Lead Quantity/Wire Size	9 @ 18 AWG
Motor Lead Termination	Flying Leads
Motor Standards	NEMA
Motor Type	3526M
Mounting Arrangement	F1
Number of Poles	4
Overall Length	12.42 IN
Power Factor	74
Product Family	General Purpose
Pulley End Bearing Type	Ball
Pulley Face Code	Resilient Mount
Pulley Shaft Indicator	Standard
Rodent Screen	None
Service Factor	1.15
Shaft Diameter	0.625 IN
Shaft Ground Indicator	No Shaft Grounding
Shaft Rotation	Reversible
Shaft Slinger Indicator	No Slinger
Speed	1770 rpm
Speed Code	Single Speed
Starting Method	Direct on line
Thermal Device - Bearing	None
Thermal Device - Winding	None
Vibration Sensor Indicator	No Vibration Sensor
Winding Thermal 1	None
Winding Thermal 2	None

Nameplate

NP3155L									
CAT.NO.	ERM3157								
SPEC.	35F883Z808G1								
HP	2								
VOLTS	208-230/460								
AMP	5.8/2.9								
RPM	1770								
FRAME	56H		HZ	60		PH	3		
SER.F.	1.15	CODE	L	DES	B	CL	F		
F.L. AVG. EFF.	86.5	PF	74						
RATING	40C AMB-CONT								
CC									
DE	6203		ODE	6203					
ENCL	OPEN	SN							
	SFA 6.6-6.5/3.25								

AC Induction Motor Performance Data

Record # 87253

Preliminary Data Sheet

Winding: 35WGZ808-R002		Type: 3526M		Enclosure: OPEN	
Nameplate Data			460 V, 60 Hz: High Voltage Connection		
Rated Output (HP)	2	Full Load Torque	5.95 LB-FT		
Volts	208-230/460	Start Configuration	direct on line		
Full Load Amps	5.8/2.9	Breakdown Torque	25.15 LB-FT		
R.P.M.	1770	Pull-up Torque	15.03 LB-FT		
Hz	60 Phase	Locked-rotor Torque	18.18 LB-FT		
NEMA Design Code	B KVA Code	Starting Current	25.08 A		
Service Factor (S.F.)	1.15	No-load Current	1.83 A		
NEMA Nom. Eff.	86.5 Power Factor	Line-line Res. @ 25°C	9.39 Ω		
Rating - Duty	40C AMB-CONT	Temp. Rise @ Rated Load	30°C		
S.F. Amps	6.6-6.5/3.25	Temp. Rise @ S.F. Load	41°C		
		Locked-rotor Power Factor	59.6		
		Rotor inertia	0.188 lb-ft ²		

Load Characteristics 460 V, 60 Hz, 2 HP

% of Rated Load	25	50	75	100	125	150	S.F.
Power Factor	32	52	65	74	79	83	77
Efficiency	76.8	84.6	86.7	86.7	85.7	84.4	86.1
Speed	1792	1785	1777	1768	1760	1749	1763
Line amperes	1.91	2.14	2.48	2.93	3.47	4.01	3.25

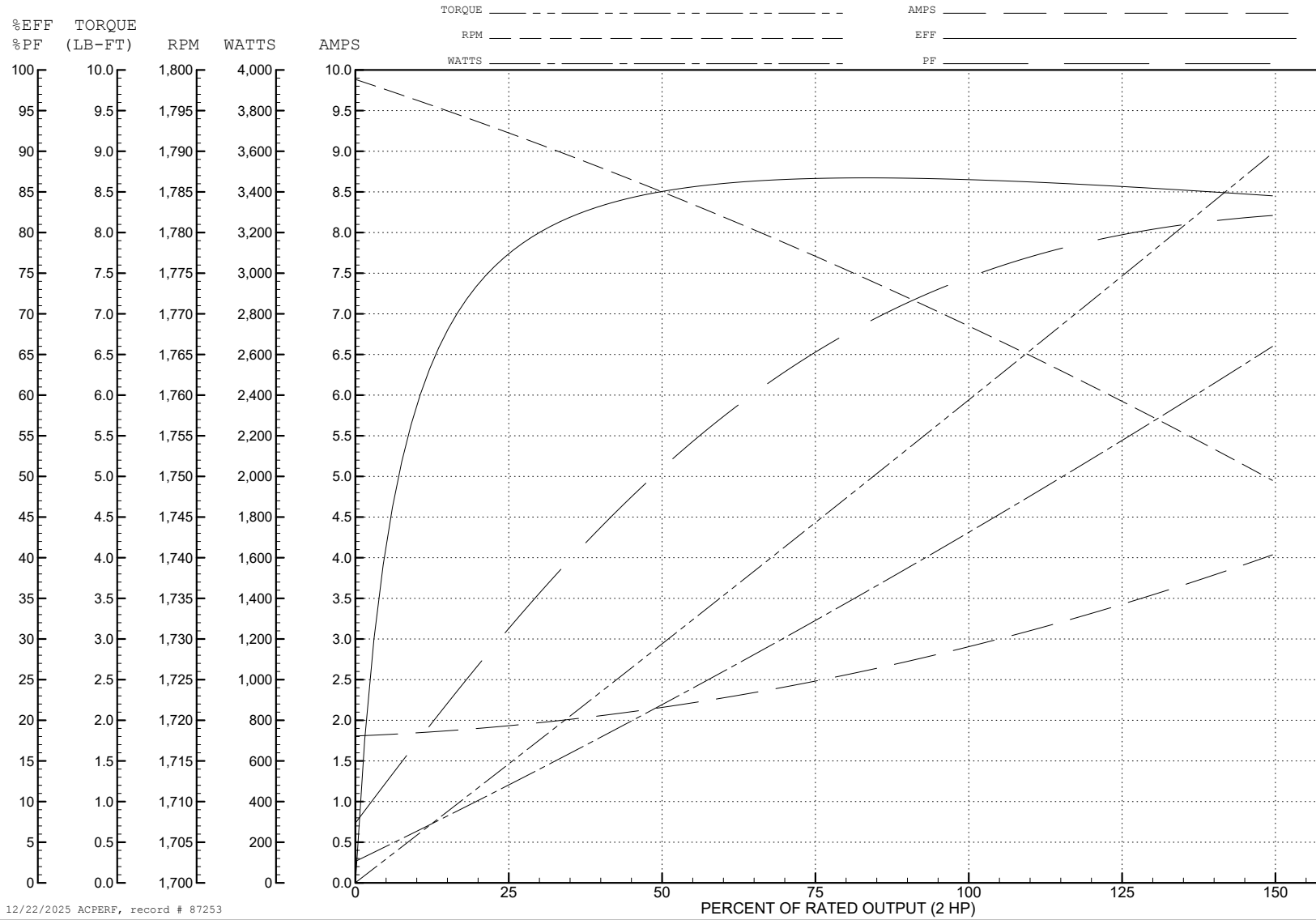
ABB Motors and Mechanical Inc.

WINDING # 35WGZ808

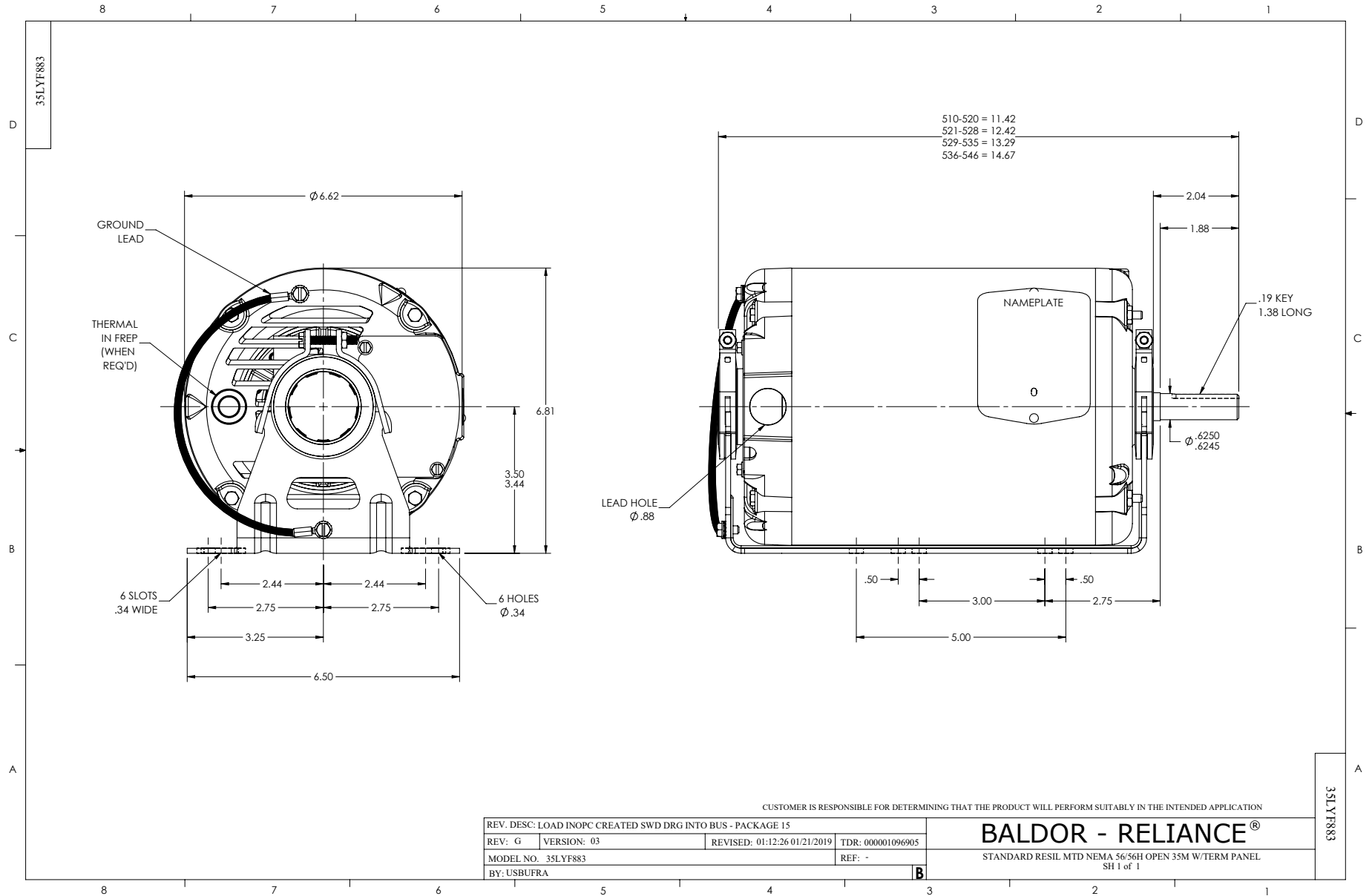
Typical performance - not guaranteed values.

2 HP 3 PH 60 HZ 1770 RPM 460 V 3526M

TORQUES (LB-FT): PO=25.15 PU=15.03 LR=18.18 LRA=25.08



12/22/2025 ACPERF, record # 87253



CD0005



LOW VOLTAGE
(2Y)



LINE

HIGH VOLTAGE
(1Y)



LINE

NOTES:

1. INTERCHANGE ANY TWO LINE LEADS TO REVERSE ROTATION.
2. OPTIONAL THERMOSTATS ARE PROVIDED WHEN SPECIFIED.
3. ACTUAL NUMBER OF INTERNAL PARALLEL CIRCUITS MAY BE A MULTIPLE OF THOSE SHOWN ABOVE.
4. LEAD COLORS ARE OPTIONAL. LEADS MUST ALWAYS BE NUMBERED AS SHOWN.

REV. DESC: REVISE TO SHOW OPTIONAL COLORS			
REV. LTR: E	BY: JLP	REVISED: 01/19/99 10:15	TDR: 0171435
S00000		FILE: AAA00005140	MDL: -
		MTL: -	

BALDOR ELECTRIC Co.

3PH, DV, 9 LEADS

CD0005