

**BALDOR • RELIANCE**

---

# Customer information packet

## EM3768T-BG

5HP, 1160RPM, 3PH, 60HZ, 215T, TEFC, F1

Class - None

Division - Not Applicable

## Specifications

Enclosure	TEFC
Frame	215T
Frame Material	Iron
Frequency	60.00 Hz
Haz Area Class and Group	None
Haz Area Division	Not Applicable
Motor Letter Type	Three Phase
Output @ Frequency	5.000 HP @ 60 HZ
Phase	3
Synchronous Speed @ Frequency	1200 RPM @ 60 HZ
Voltage @ Frequency	460.0 V @ 60 HZ 230.0 V @ 60 HZ
Agency Approvals	CSA CSA EEV NEMA PREMIUM UR
Ambient Temperature	40 °C
Auxiliary Box	NO AUXILLARY BOX
Auxiliary Box Lead Termination	None
Base Indicator	Rigid
Bearing Grease Type	Polyrex EM (-20F +300F)
Blower	None
Current @ Voltage	7.400 A @ 460.0 V 15.300 A @ 208.0 V 14.800 A @ 230.0 V
Design Code	A
Drip Cover	No Drip Cover
Duty Rating	CONT
Efficiency @ 100% Load	89.5 %
Electrically Isolated Bearing	Not Electrically Isolated
Feedback Device	NO FEEDBACK
Heater Indicator	No Heater

## Part detail

Revision	E
Type	AC
Mech. spec.	
Base	
Status	PRD/A
Elec. spec.	07WGY763
Layout	07LYN555
Eff. date	04-29-2024
CD Diagram	CD0005
Poles	06
Leads	9#14
Proprietary	False
Created date	04-12-2019

High Voltage Full Load Amps	7.4 a
Insulation Class	H
Inverter Code	Inverter Ready
IP Rating	NONE
KVA Code	K
Lifting Lugs	Standard Lifting Lugs
Locked Bearing Indicator	Locked Bearing
Motor Lead Termination	Flying Leads
Motor Standards	NEMA
Motor Type	0746M
Mounting Arrangement	F1
Number of Poles	6
Overall Length	18.45 IN
Power Factor	71
Product Family	General Purpose
Pulley Face Code	Standard
Rodent Screen	None
Service Factor	1.15
Shaft Diameter	1.375 IN
Shaft Ground Indicator	Shaft Grounding
Shaft Rotation	Reversible
Speed	1160 rpm
Speed Code	Single Speed
Starting Method	Direct on line
Thermal Device - Winding	None
Vibration Sensor Indicator	No Vibration Sensor
Winding Thermal 1	None
Winding Thermal 2	None

**Nameplate**

**NP3441LUA**

<b>CAT.NO.</b>	EM3768T-BG						
<b>SPEC</b>	07-0000-0096						
<b>HP</b>	5						
<b>VOLTS</b>	230/460						
<b>AMPS</b>	14.8/7.4						
<b>RPM</b>	1160						
<b>FRAME</b>	215T		<b>HZ</b>	60		<b>PH</b>	3
<b>SF</b>	1.15	<b>CODE</b>	K	<b>DES</b>	A	<b>CLASS</b>	H
<b>NEMA NOM. EFF</b>	89.5	<b>PF</b>	71				
<b>RATING</b>	40C AMB-CONT						
<b>CC</b>	010A						
<b>ENCL</b>	TEFC	<b>SER</b>					
<b>DE</b>	6307	<b>ODE</b>	6307				
<b>VPWM INVERTER READY</b>							
<b>CT6-60H(10:1)VT3-60H(20:1</b>	50HZ 5HP 190/380V 17.2/8.6A						SF1.0

**AC Induction Motor Performance Data**

Record # 70547

Typical performance - not guaranteed values

Winding: 07WGY763-R009		Type: 0746M	Enclosure: TEFC	
<b>Nameplate Data</b>			<b>460 V, 60 Hz: High Voltage Connection</b>	
Rated Output (HP)	5	Full Load Torque	22.6 LB-FT	
Volts	230/460	Start Configuration	direct on line	
Full Load Amps	14.8/7.4	Breakdown Torque	80.9 LB-FT	
R.P.M.	1160	Pull-up Torque	51.4 LB-FT	
Hz	60 Phase	Locked-rotor Torque	56.4 LB-FT	
NEMA Design Code	A KVA Code	Starting Current	55.3 A	
Service Factor (S.F.)	1.15	No-load Current	4.04 A	
NEMA Nom. Eff.	89.5 Power Factor	Line-line Res. @ 25°C	1.64 Ω	
Rating - Duty	40C AMB-CONT	Temp. Rise @ Rated Load		
		Locked-rotor Power Factor	22.2	
		Rotor inertia	1.14 LB-FT <sup>2</sup>	

**Load Characteristics 460 V, 60 Hz, 5 HP**

% of Rated Load	25	50	75	100	125	150	S.F.
Power Factor	34	51	63	70	73	75	72
Efficiency	81.5	89.5	90	89.7	88.7	87.7	89.1
Speed	1193	1187	1179	1171	1163	1153	1166
Line amperes	4.42	5.17	6.31	7.56	9.04	10.6	8.45

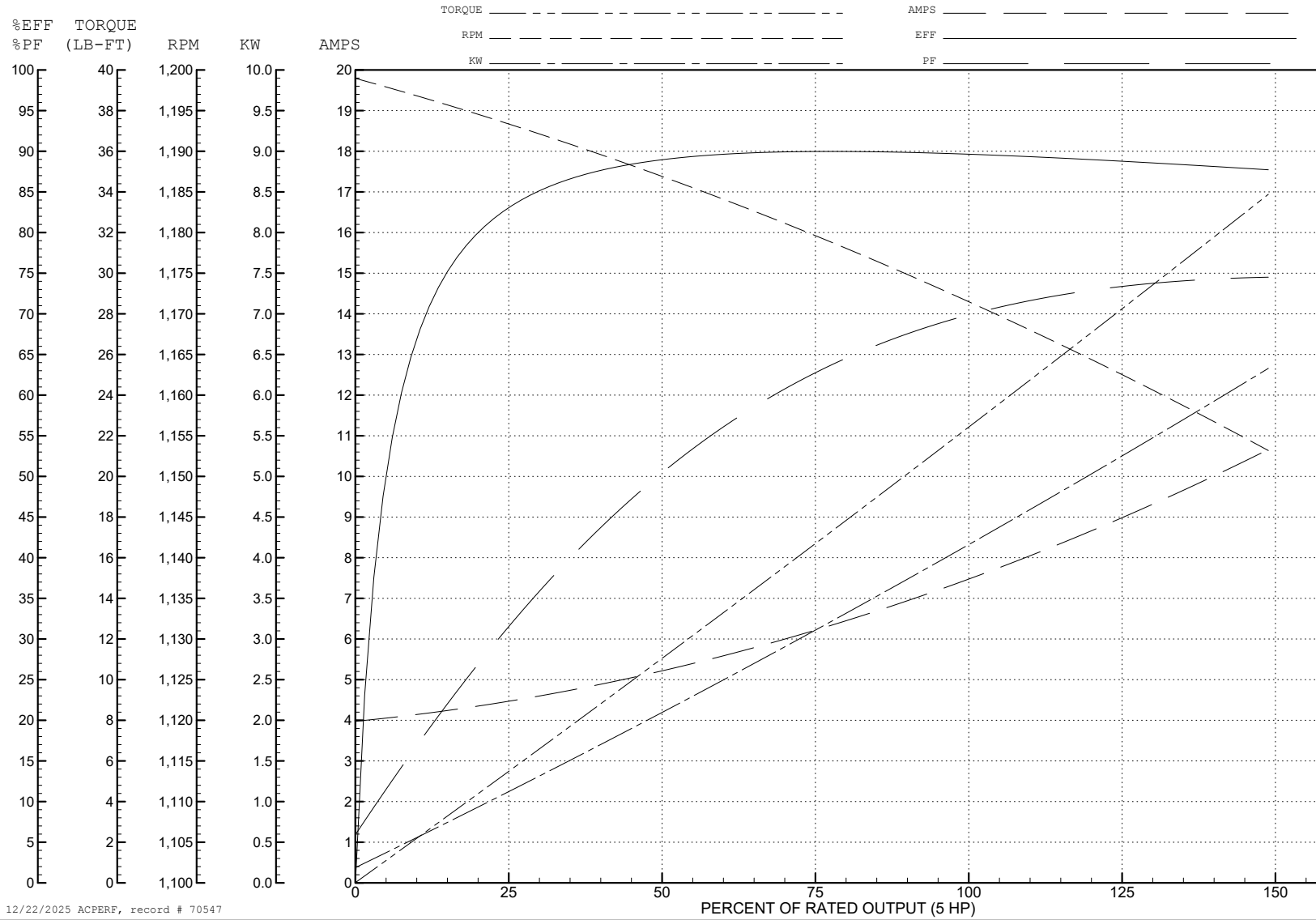
ABB Motors and Mechanical Inc.

WINDING # 07WGY763

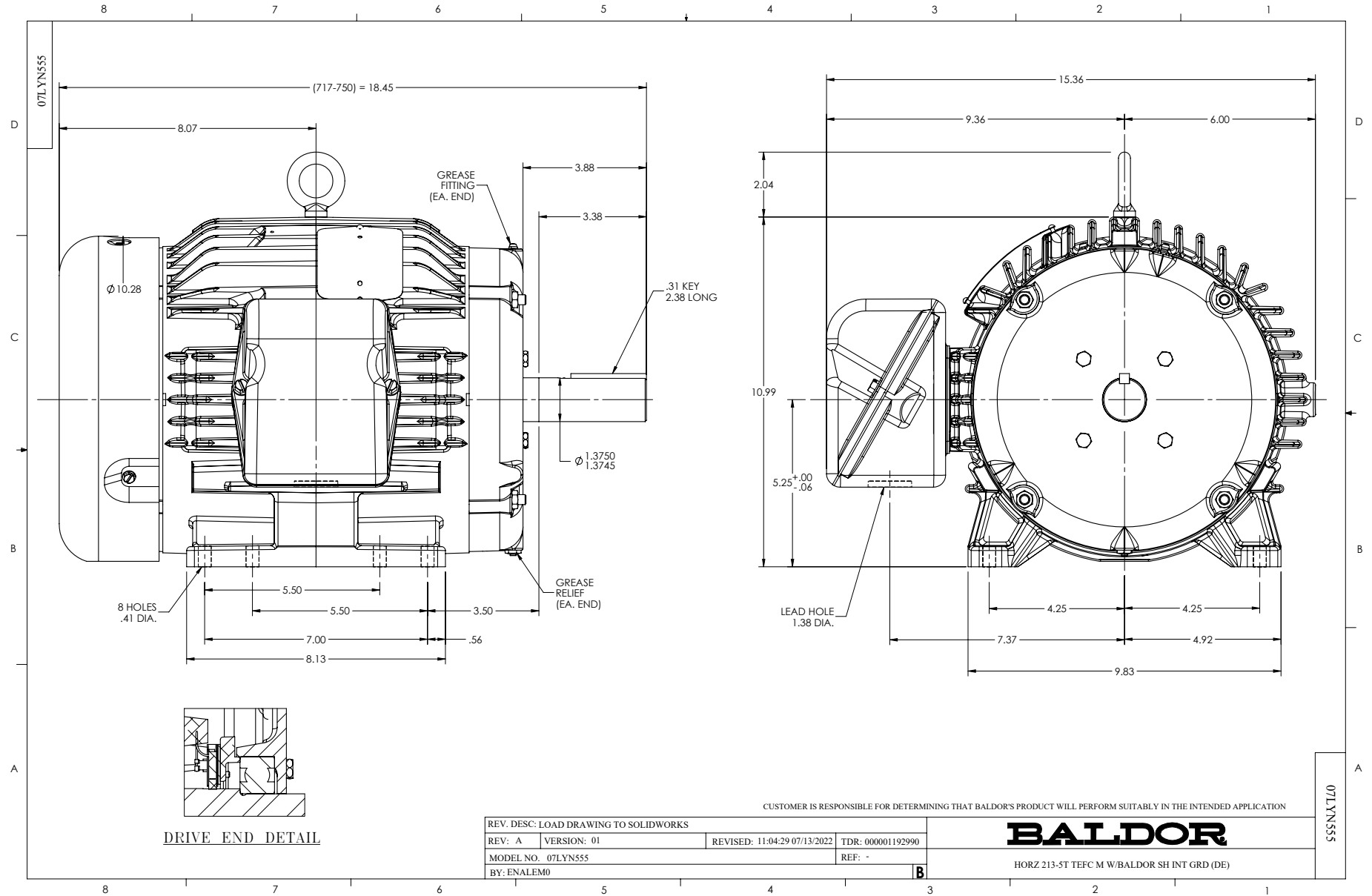
Typical performance - not guaranteed values.

5 HP 3 PH 60 HZ 1160 RPM 460 V 0746M

TORQUES (LB-FT): PO=80.9 PU=51.4 LR=56.4 LRA=55.3



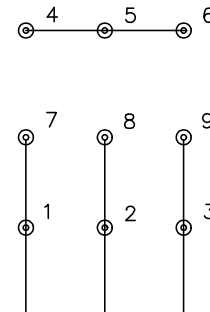
12/22/2025 ACPERF, record # 70547



CD0005

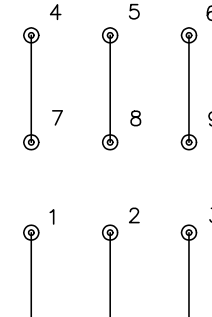


LOW VOLTAGE  
(2Y)



LINE

HIGH VOLTAGE  
(1Y)



LINE

NOTES:

1. INTERCHANGE ANY TWO LINE LEADS TO REVERSE ROTATION.
2. OPTIONAL THERMOSTATS ARE PROVIDED WHEN SPECIFIED.
3. ACTUAL NUMBER OF INTERNAL PARALLEL CIRCUITS MAY BE A MULTIPLE OF THOSE SHOWN ABOVE.
4. LEAD COLORS ARE OPTIONAL. LEADS MUST ALWAYS BE NUMBERED AS SHOWN.

CD0005

REV. DESC: REVISE TO SHOW OPTIONAL COLORS			
REV. LTR: E	BY: JLP	REVISED: 01/19/99 10:15	TDR: 0171435
S00000		FILE: AAA00005140	MDL: -
		MTL: -	

**BALDOR ELECTRIC Co.**

3PH, DV, 9 LEADS