

**BALDOR • RELIANCE**

---

# Customer information packet

## EM2547T-G

60HP, 1775RPM, 3PH, 60HZ, 364T, 4278M, OPSB, F1

## Specifications

Enclosure	OPSB
Frame	364T
Frame Material	Steel
Frequency	60.00 Hz
Motor Letter Type	Three Phase
Output @ Frequency	60.000 HP @ 60 HZ
Phase	3
Synchronous Speed @ Frequency	1800 RPM @ 60 HZ
Voltage @ Frequency	230.0 V @ 60 HZ 460.0 V @ 60 HZ
Agency Approvals	CSA CSA EEV UR
Ambient Temperature	40 °C
Auxiliary Box	NO AUXILLARY BOX
Auxiliary Box Lead Termination	None
Base Indicator	Rigid
Bearing Grease Type	Polyrex EM (-20F +300F)
Blower	None
Current @ Voltage	144.000 A @ 208.0 V 68.000 A @ 460.0 V 136.000 A @ 230.0 V
Design Code	B
Drip Cover	No Drip Cover
Duty Rating	CONT
Efficiency @ 100% Load	95.0 %
Electrically Isolated Bearing	Not Electrically Isolated
Feedback Device	NO FEEDBACK
Front Face Code	Standard
Front Shaft Indicator	None
Heater Indicator	No Heater
High Voltage Full Load Amps	68.0 a

## Part detail

Revision	W
Type	AC
Mech. spec.	42E260
Base	
Status	PRD/A
Elec. spec.	42WGW587
Layout	42LYE260
Eff. date	05-29-2025
CD Diagram	CD0180
Poles	04
Leads	9#6
Proprietary	False
Created date	11-30-2011

Insulation Class	H
Inverter Code	Inverter Ready
KVA Code	G
Lifting Lugs	Standard Lifting Lugs
Locked Bearing Indicator	Locked Bearing
Motor Lead Exit	Ko Box
Motor Lead Quantity/Wire Size	9 @ 6 AWG
Motor Lead Termination	Flying Leads
Motor Standards	NEMA
Motor Type	4278M
Mounting Arrangement	F1
Number of Poles	4
Overall Length	30.69 IN
Power Factor	87
Product Family	General Purpose
Pulley End Bearing Type	Ball
Pulley Face Code	Standard
Pulley Shaft Indicator	Standard
Rodent Screen	None
Service Factor	1.15
Shaft Diameter	2.375 IN
Shaft Extension Location	Pulley End
Shaft Ground Indicator	Shaft Grounding
Shaft Rotation	Reversible
Shaft Slinger Indicator	No Slinger
Speed	1775 rpm
Speed Code	Single Speed
Starting Method	Direct on line
Thermal Device - Bearing	None
Thermal Device - Winding	None
Vibration Sensor Indicator	No Vibration Sensor
Winding Thermal 1	None
Winding Thermal 2	None

**Nameplate**

**NP2138LUA**

<b>CAT.NO.</b>	EM2547T-G	<b>P/N</b>		<b>ENCLOSURE</b>	OPSB
<b>SPEC.</b>	42E260W587G1	<b>CC</b>	010A	<b>FRAME</b>	364T
<b>HP</b>	60	<b>CLASS</b>	H	<b>HZ</b>	60
<b>RPM</b>	1775	<b>PH</b>	3	<b>DES</b>	A
<b>VOLT</b>	230/460	<b>KVA-CODE</b>	H	<b>ODE BRG</b>	6311
<b>AMP</b>	138/69	<b>DE BRG</b>			6313
<b>RATING</b>	40C AMB-CONT	<b>GREASE</b>	POLYREX EM		
<b>NEMA-NOM-EFF</b>	95	<b>PF</b>	86	<b>SER.F.</b>	1.15
<b>HTR-VOLTS</b>	50HZ 60HP 190/380V 162/81A			<b>SF1.0</b>	
<b>HTR-AMPS</b>					

**AC Induction Motor Performance Data**

Record # 17314

Typical performance - not guaranteed values

Winding: 42WGW587-R005		Type: 4278M	Enclosure: OPSB	
<b>Nameplate Data</b>			<b>460 V, 60 Hz: High Voltage Connection</b>	
Rated Output (HP)	60	Full Load Torque	178 LB-FT	
Volts	230/460	Start Configuration	direct on line	
Full Load Amps	138/69	Breakdown Torque	584 LB-FT	
R.P.M.	1775	Pull-up Torque	285 LB-FT	
Hz	60 Phase	Locked-rotor Torque	311 LB-FT	
NEMA Design Code	A KVA Code	Starting Current	514 A	
Service Factor (S.F.)	1.15	No-load Current	25.4 A	
NEMA Nom. Eff.	95 Power Factor	Line-line Res. @ 25°C	0.0911 Ω	
Rating - Duty	40C AMB-CONT	Temp. Rise @ Rated Load	38°C	
S.F. Amps		Temp. Rise @ S.F. Load	46°C	
		Locked-rotor Power Factor	26.2	
		Rotor inertia	10.4 LB-FT <sup>2</sup>	

**Load Characteristics 460 V, 60 Hz, 60 HP**

% of Rated Load	25	50	75	100	125	150	S.F.
Power Factor	51	72	81	85	86	87	86
Efficiency	92.4	94.9	95.3	95	94.6	93.9	94.8
Speed	1794	1789	1784	1779	1774	1768	1776
Line amperes	30.4	41	54.7	69.9	86.2	103	79.7

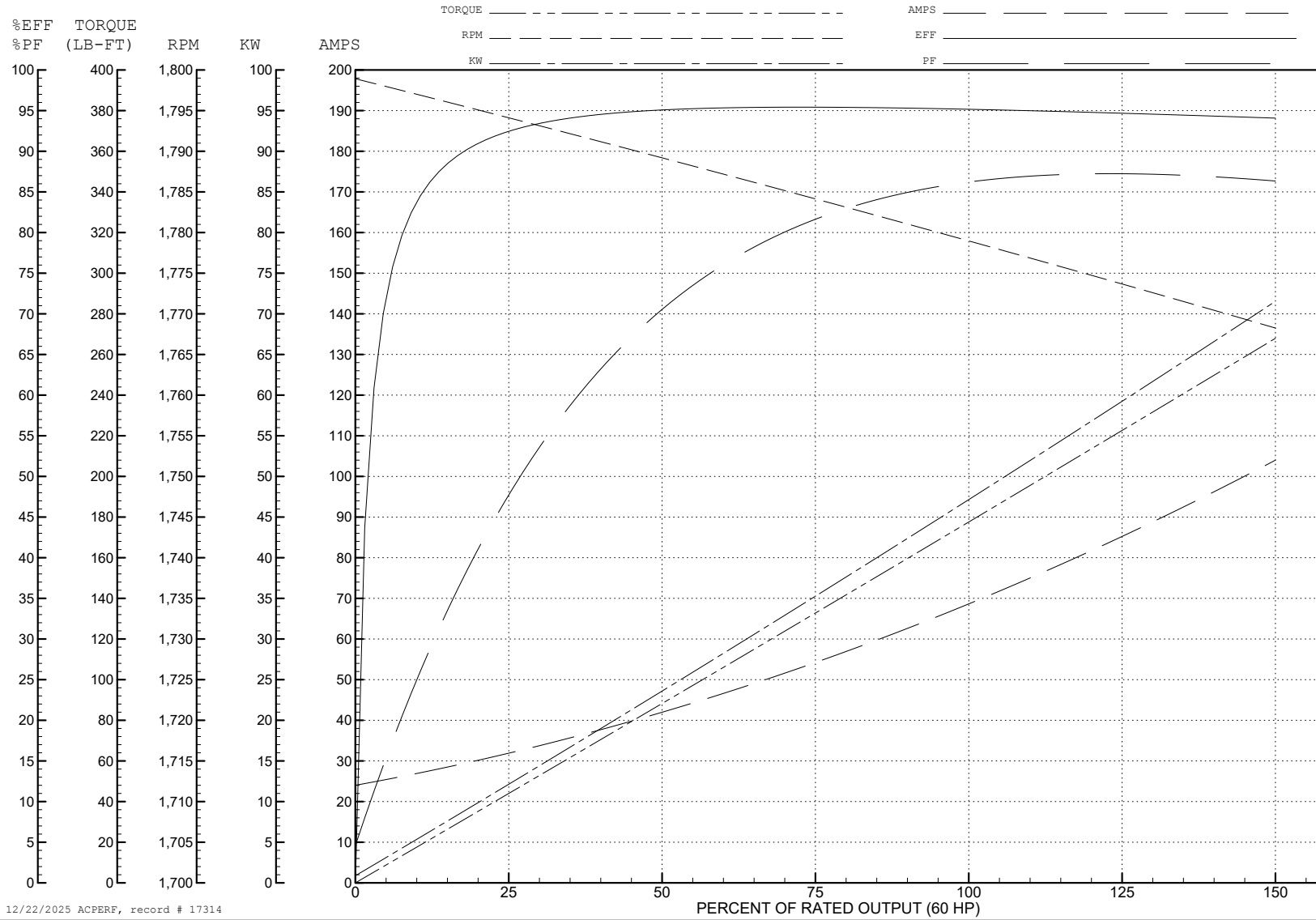
ABB Motors and Mechanical Inc.

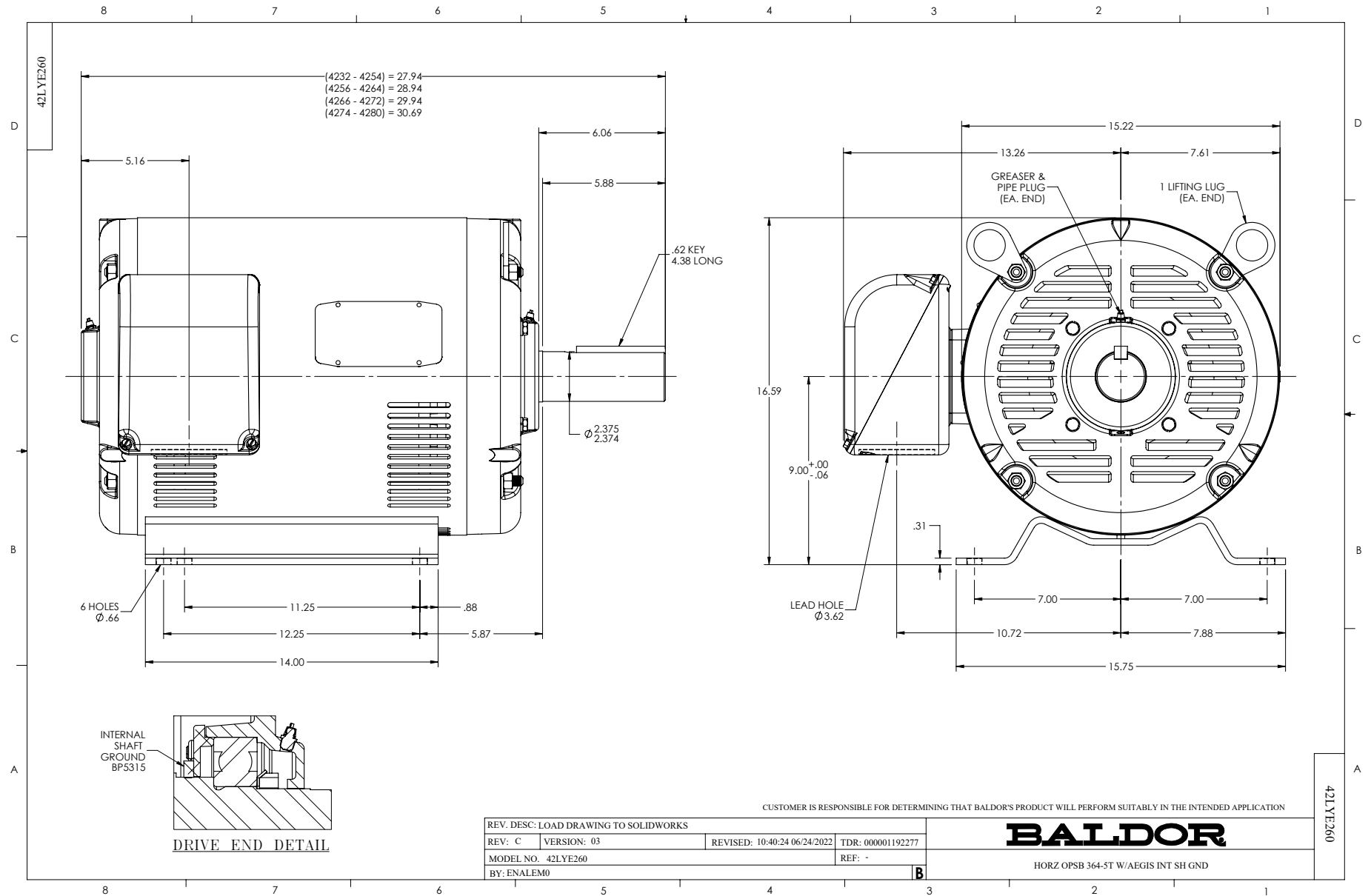
WINDING # 42WGW587

Typical performance - not guaranteed values.

60 HP 3 PH 60 HZ 1775 RPM 460 V 4278M

TORQUES (LB-FT): PO=584 PU=285 LR=311 LRA=514





CD0180



LOW VOLTAGE  
(2D)



HIGH VOLTAGE  
(1D)



NOTES:

1. INTERCHANGE ANY TWO LINE LEADS TO REVERSE ROTATION.
2. OPTIONAL THERMOSTATS ARE PROVIDED WHEN SPECIFIED.
3. ACTUAL NUMBER OF INTERNAL PARALLEL CIRCUITS MAY BE A MULTIPLE OF THOSE SHOWN ABOVE.
4. LEAD COLORS ARE OPTIONAL. LEADS MUST ALWAYS BE NUMBERED AS SHOWN.

CD0180

REV. DESC: ADD CLASS CONN00000007		
REV. LTR: D	VERSION: 01	TDR: 000001099922
FILE: \AAA\00005\148	REVISED: 10: 25: 29 02/19/2019	BY: ENBRIRO
MTL: -	© □	

**BALDOR - RELIANCE®**

3PH, DV, 9 LEADS, DELTA CONNECTION

SH 1 of 1