

BALDOR • RELIANCE

Customer information packet

EM2532T-G

25HP, 1180RPM, 3PH, 60HZ, 324T, 4072M, OPSB, F1

Specifications

| | |
|--------------------------------|--|
| Enclosure | OPSB |
| Frame | 324T |
| Frame Material | Steel |
| Frequency | 60.00 Hz |
| Motor Letter Type | Three Phase |
| Output @ Frequency | 25.000 HP @ 60 HZ |
| Phase | 3 |
| Synchronous Speed @ Frequency | 1200 RPM @ 60 HZ |
| Voltage @ Frequency | 230.0 V @ 60 HZ 460.0 V @ 60 HZ |
| Agency Approvals | CSA CSA EEV UR |
| Ambient Temperature | 40 °C |
| Auxiliary Box | NO AUXILLARY BOX |
| Auxiliary Box Lead Termination | None |
| Base Indicator | Rigid |
| Bearing Grease Type | Polyrex EM (-20F +300F) |
| Blower | None |
| Current @ Voltage | 68.000 A @ 230.0 V 70.000 A @ 208.0 V 34.000 A @ 460.0 V |
| Design Code | A |
| Drip Cover | No Drip Cover |
| Duty Rating | CONT |
| Efficiency @ 100% Load | 93.0 % |
| Electrically Isolated Bearing | Not Electrically Isolated |
| Feedback Device | NO FEEDBACK |
| Front Face Code | Standard |
| Front Shaft Indicator | None |
| Heater Indicator | No Heater |
| High Voltage Full Load Amps | 34.0 a |

Part detail

| | |
|--------------|------------|
| Revision | T |
| Type | AC |
| Mech. spec. | 40E245 |
| Base | |
| Status | PRD/A |
| Elec. spec. | 40WGX192 |
| Layout | 40LYE245 |
| Eff. date | 11-29-2023 |
| CD Diagram | CD0180 |
| Poles | 06 |
| Leads | 9#10 |
| Proprietary | False |
| Created date | 12-01-2011 |

| | |
|-------------------------------|-----------------------|
| Insulation Class | H |
| Inverter Code | Inverter Ready |
| KVA Code | J |
| Lifting Lugs | Standard Lifting Lugs |
| Locked Bearing Indicator | No Locked Bearing |
| Motor Lead Exit | Ko Box |
| Motor Lead Quantity/Wire Size | 9 @ 10 AWG |
| Motor Lead Termination | Flying Leads |
| Motor Standards | NEMA |
| Motor Type | 4072M |
| Mounting Arrangement | F1 |
| Number of Poles | 6 |
| Overall Length | 27.69 IN |
| Power Factor | 76 |
| Product Family | General Purpose |
| Pulley End Bearing Type | Ball |
| Pulley Face Code | Standard |
| Pulley Shaft Indicator | Standard |
| Rodent Screen | None |
| Service Factor | 1.15 |
| Shaft Diameter | 2.125 IN |
| Shaft Extension Location | Pulley End |
| Shaft Ground Indicator | Shaft Grounding |
| Shaft Rotation | Reversible |
| Shaft Slinger Indicator | No Slinger |
| Speed | 1180 rpm |
| Speed Code | Single Speed |
| Starting Method | Direct on line |
| Thermal Device - Bearing | None |
| Thermal Device - Winding | None |
| Vibration Sensor Indicator | No Vibration Sensor |
| Winding Thermal 1 | None |
| Winding Thermal 2 | None |

Nameplate

NP2138LUA

| | | | | | |
|---------------------|---------------------------|-----------------|------------|------------------|------|
| CAT.NO. | EM2532T-G | P/N | | ENCLOSURE | OPSB |
| SPEC. | 40E245X192G1 | CC | 010A | FRAME | 324T |
| HP | 25 | CLASS | H | HZ | 60 |
| RPM | 1180 | PH | 3 | DES | A |
| VOLT | 230/460 | KVA-CODE | J | ODE BRG | 6309 |
| AMP | 68/34 | DE BRG | | | 6312 |
| RATING | 40C AMB-CONT | GREASE | POLYREX EM | | |
| NEMA-NOM-EFF | 93 | PF | 76 | SER.F. | 1.15 |
| HTR-VOLTS | 50HZ 25HP 190/380V 78/39A | | | SF1.0 | |
| HTR-AMPS | | | | | |

AC Induction Motor Performance Data

Record # 53040

Typical performance - not guaranteed values

| Winding: 40WGX192-R004 | | Type: 4072M | | Enclosure: OPSB | |
|-------------------------------|--------------|----------------------------------|--|------------------------|--|
| Nameplate Data | | | 460 V, 60 Hz: High Voltage Connection | | |
| Rated Output (HP) | 25 | Full Load Torque | 111 LB-FT | | |
| Volts | 230/460 | Start Configuration | direct on line | | |
| Full Load Amps | 68/34 | Breakdown Torque | 410 LB-FT | | |
| R.P.M. | 1180 | Pull-up Torque | 205 LB-FT | | |
| Hz | 60 | Locked-rotor Torque | 217 LB-FT | | |
| NEMA Design Code | A | Starting Current | 236 A | | |
| Service Factor (S.F.) | 1.15 | No-load Current | 16.7 A | | |
| NEMA Nom. Eff. | 93 | Line-line Res. @ 25°C | 0.29283 Ω | | |
| Rating - Duty | 40C AMB-CONT | Temp. Rise @ Rated Load | 40°C | | |
| S.F. Amps | | Temp. Rise @ S.F. Load | 48°C | | |
| | | Locked-rotor Power Factor | 31 | | |
| | | Rotor inertia | 8.82 LB-FT ² | | |

Load Characteristics 460 V, 60 Hz, 25 HP

| % of Rated Load | 25 | 50 | 75 | 100 | 125 | 150 | S.F. |
|------------------------|-----------|-----------|-----------|------------|------------|------------|-------------|
| Power Factor | 36 | 57 | 69 | 76 | 79 | 80 | 78 |
| Efficiency | 88 | 92.3 | 93.2 | 93.2 | 92.7 | 92 | 92.9 |
| Speed | 1195.9 | 1192.3 | 1188.4 | 1184.9 | 1180.9 | 1176.1 | 1182 |
| Line amperes | 18.5 | 22.3 | 27.4 | 33.5 | 40.3 | 47.8 | 37.6 |

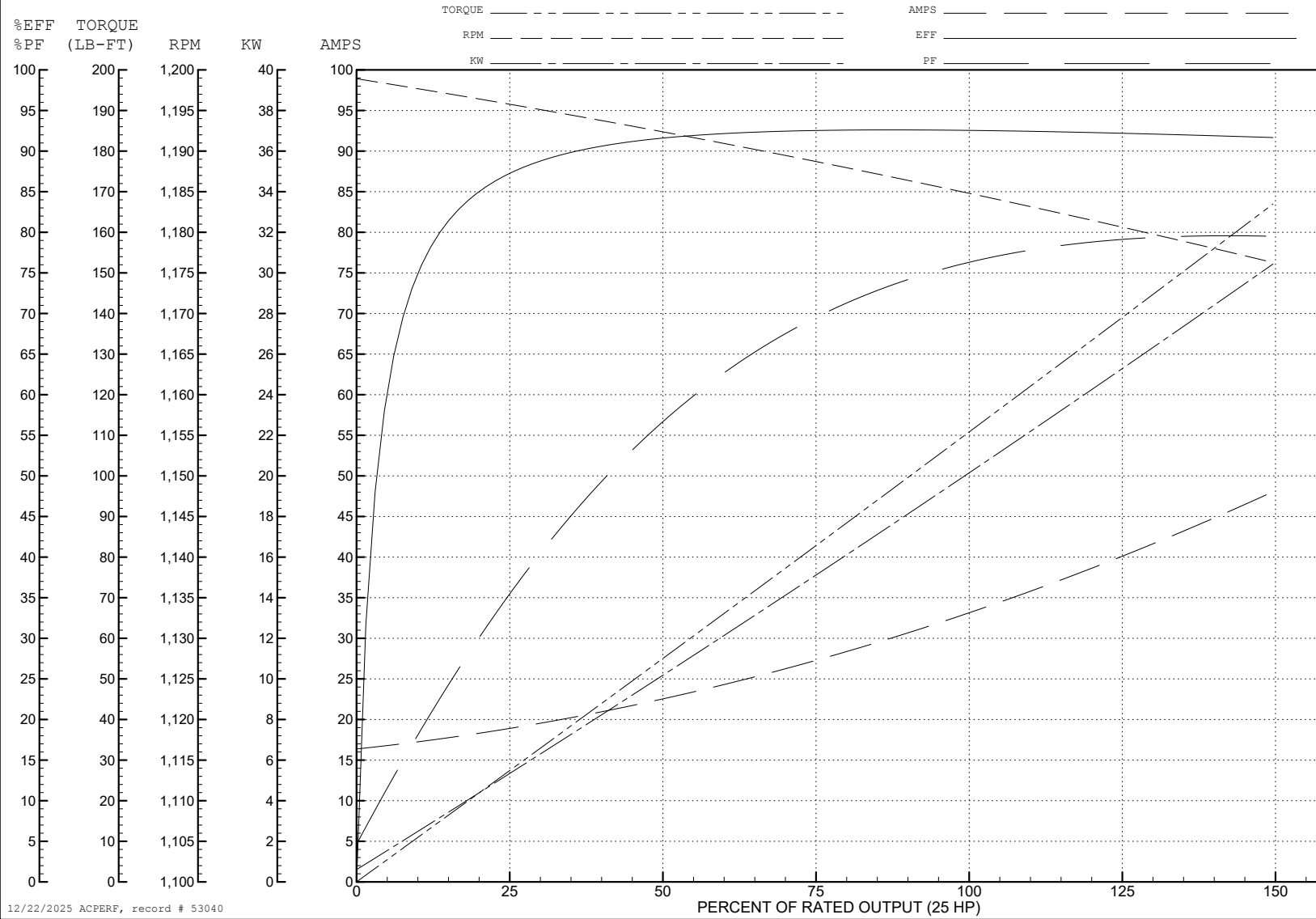
ABB Motors and Mechanical Inc.

WINDING # 40WGX192

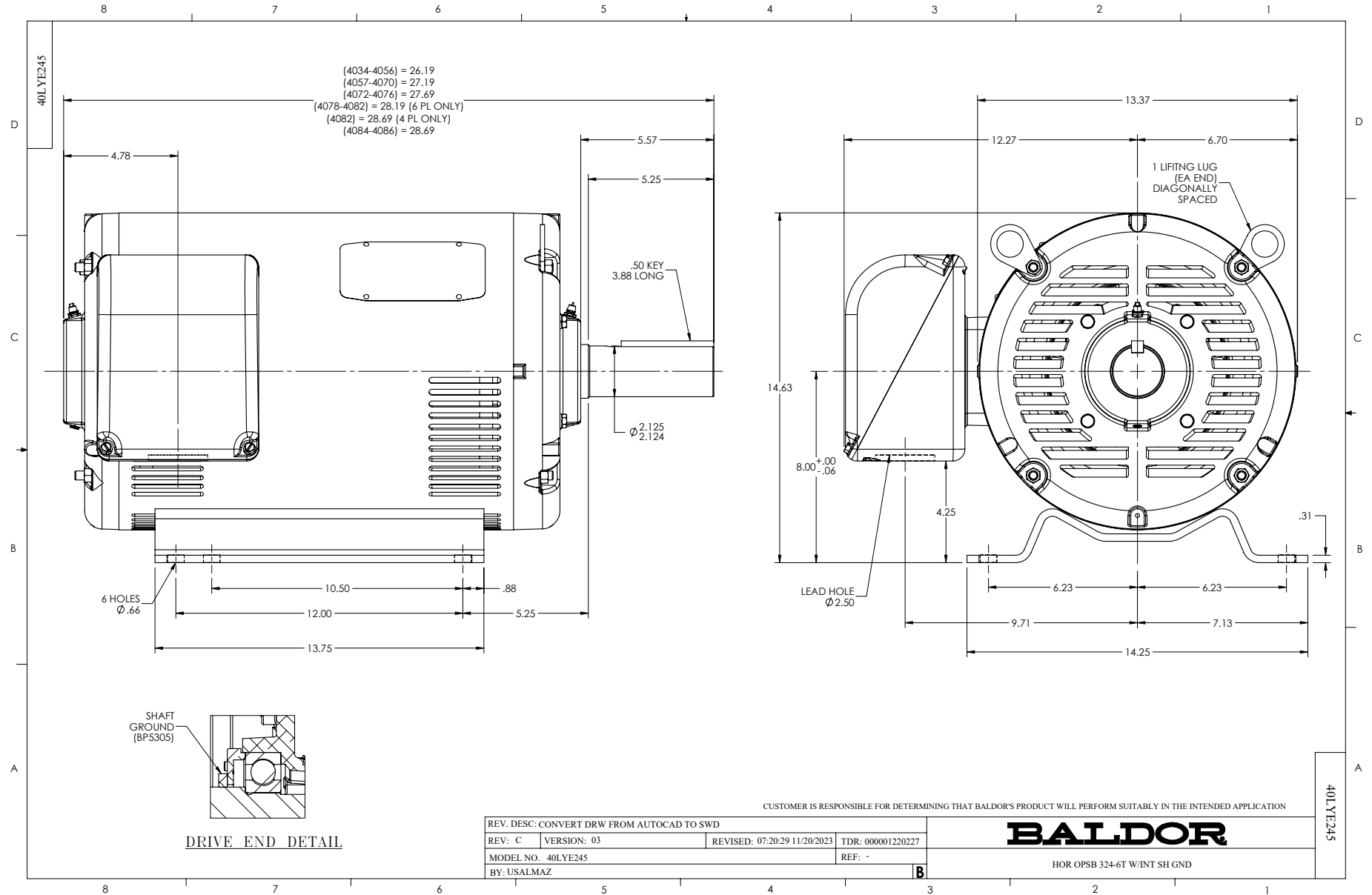
Typical performance - not guaranteed values.

25 HP 3 PH 60 HZ 1180 RPM 460 V 4072M

TORQUES (LB-FT): PO=410 PU=205 LR=217 LRA=236



12/22/2025 ACPERF, record # 53040



CD0180



LOW VOLTAGE
(2D)



HIGH VOLTAGE
(1D)



NOTES:

1. INTERCHANGE ANY TWO LINE LEADS TO REVERSE ROTATION.
2. OPTIONAL THERMOSTATS ARE PROVIDED WHEN SPECIFIED.
3. ACTUAL NUMBER OF INTERNAL PARALLEL CIRCUITS MAY BE A MULTIPLE OF THOSE SHOWN ABOVE.
4. LEAD COLORS ARE OPTIONAL. LEADS MUST ALWAYS BE NUMBERED AS SHOWN.

CD0180

| | | |
|-----------------------------------|--------------------------------|-------------------|
| REV. DESC: ADD CLASS CONN00000007 | | |
| REV. LTR: D | VERSION: 01 | TDR: 000001099922 |
| FILE: \AAA\00005\148 | REVISED: 10: 25: 29 02/19/2019 | BY: ENBRIRO |
| MTL: - | © □ | |

BALDOR - RELIANCE®

3PH, DV, 9 LEADS, DELTA CONNECTION

SH 1 of 1