

BALDOR • RELIANCE

Customer information packet

EM2531T-G

25HP, 1775RPM, 3PH, 60HZ, 284T, 4050M, OPSB, F1

Specifications

Enclosure	OPSB
Frame	284T
Frame Material	Steel
Frequency	60.00 Hz
Motor Letter Type	Three Phase
Output @ Frequency	25.000 HP @ 60 HZ
Phase	3
Synchronous Speed @ Frequency	1800 RPM @ 60 HZ
Voltage @ Frequency	460.0 V @ 60 HZ 230.0 V @ 60 HZ
Agency Approvals	CSA CSA EEV NEMA PREMIUM UR
Ambient Temperature	40 °C
Auxiliary Box	NO AUXILLARY BOX
Auxiliary Box Lead Termination	None
Base Indicator	Rigid
Bearing Grease Type	Polyrex EM (-20F +300F)
Blower	None
Current @ Voltage	64.000 A @ 208.0 V 60.000 A @ 230.0 V 30.000 A @ 460.0 V
Design Code	A
Drip Cover	No Drip Cover
Duty Rating	CONT
Efficiency @ 100% Load	93.6 %
Electrically Isolated Bearing	Not Electrically Isolated
Feedback Device	NO FEEDBACK
Front Shaft Indicator	None
Heater Indicator	No Heater
High Voltage Full Load Amps	30.0 a

Part detail

Revision	J
Type	AC
Mech. spec.	40E246
Base	
Status	PRD/A
Elec. spec.	40WGX806
Layout	40LYE246
Eff. date	08-12-2024
CD Diagram	CD0005
Poles	04
Leads	9#10
Proprietary	False
Created date	11-19-2020

Insulation Class	H
Inverter Code	Inverter Ready
KVA Code	G
Lifting Lugs	Standard Lifting Lugs
Locked Bearing Indicator	No Locked Bearing
Motor Lead Quantity/Wire Size	9 @ 10 AWG
Motor Lead Termination	Flying Leads
Motor Standards	NEMA
Motor Type	4050M
Mounting Arrangement	F1
Number of Poles	4
Overall Length	25.06 IN
Power Factor	82
Product Family	General Purpose
Pulley End Bearing Type	Ball
Pulley Face Code	Standard
Pulley Shaft Indicator	Standard
Rodent Screen	None
Service Factor	1.15
Shaft Diameter	1.875 IN
Shaft Ground Indicator	Shaft Grounding
Shaft Rotation	Reversible
Shaft Slinger Indicator	No Slinger
Speed	1775 rpm
Speed Code	Single Speed
Starting Method	Direct on line
Thermal Device - Bearing	None
Thermal Device - Winding	None
Vibration Sensor Indicator	No Vibration Sensor
Winding Thermal 1	None
Winding Thermal 2	None

Nameplate

NP3554LUA												
CAT.NO.	EM2531T-G			P/N				ENCL		OPSB		
SPEC.	40E246X806G1		CC	010A		FRAME	284T		SER.NO.			
HP	25		CLASS	H		HZ	60					
RPM	1775		PH	3		DES	A					
VOLTS	230/460			CODE	G		ODE BRG	6309		DE BRG	6311	
AMPS	60/30											
RATING	40C AMB-CONT			NEMA-NOM-EFF			93.6		GREASE	POLYREX EM		
PF	82		SER.F.	1.15		CT30-60(2:1) VT3-60(20:1)						
USABLE AT	50HZ 25HP 190/380V 72/36A				SF1.0							
HTR-VOLTS	HTR-AMPS		MAX. SPACE HEATER TEMP.									

AC Induction Motor Performance Data

Record # 86830

Typical performance - not guaranteed values

Winding: 40WGX806-R002		Type: 4050M		Enclosure: OPSB	
Nameplate Data			460 V, 60 Hz: High Voltage Connection		
Rated Output (HP)	25		Full Load Torque	73.81 LB-FT	
Volts	230/460		Start Configuration	direct on line	
Full Load Amps	60/30		Breakdown Torque	232 LB-FT	
R.P.M.	1775		Pull-up Torque	116 LB-FT	
Hz	60	Phase	3	Locked-rotor Torque	133 LB-FT
NEMA Design Code	A		KVA Code	G	
Service Factor (S.F.)	1.15		Starting Current	192 A	
NEMA Nom. Eff.	93.6	Power Factor	82	No-load Current	12.6 A
Rating - Duty	40C		Temp. Rise @ Rated Load	28°C	
S.F. Amps	AMB-CONT		Temp. Rise @ S.F. Load	34°C	
			Locked-rotor Power Factor	35	

Load Characteristics 460 V, 60 Hz, 25 HP

% of Rated Load	25	50	75	100	125	150	S.F.
Power Factor	45	67	78	82	85	85	84
Efficiency	89.4	93.1	93.8	93.6	93	92.1	93.2
Speed	1794.8	1789.5	1783.7	1777.6	1771	1763.2	1774
Line amperes	14.5	18.6	24.1	30.3	37.2	44.6	34.4

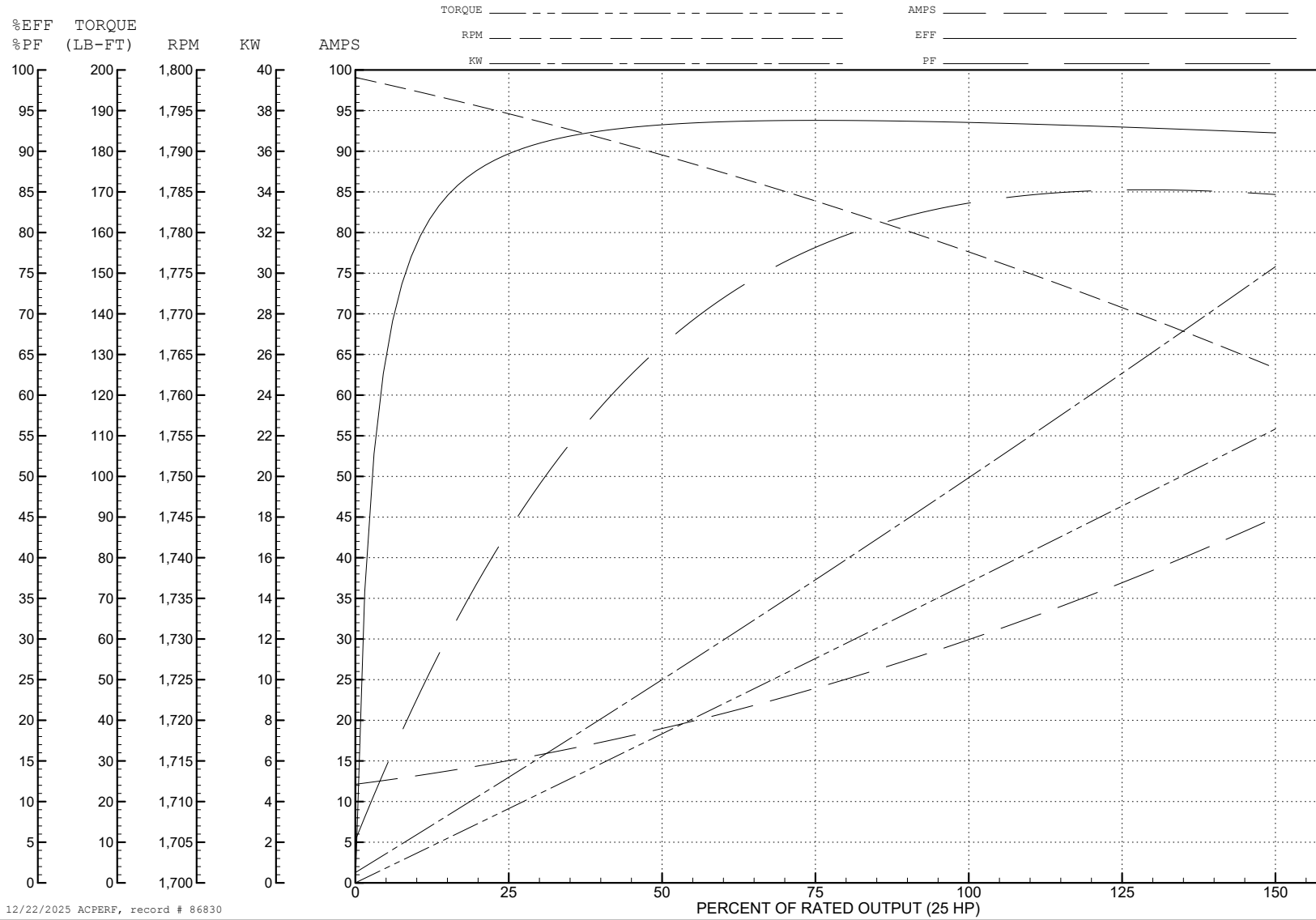
ABB Motors and Mechanical Inc.

WINDING # 40WGx806

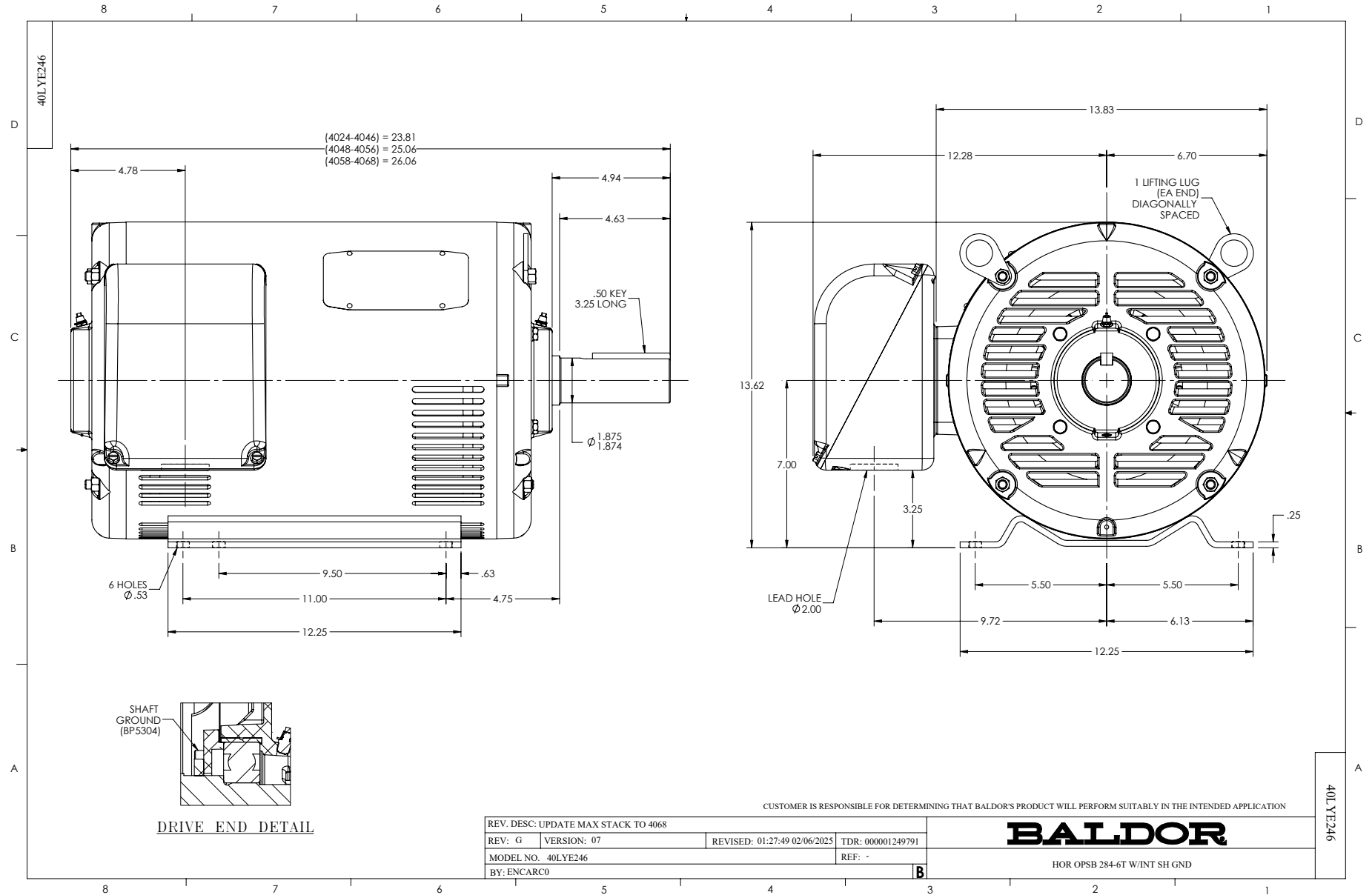
Typical performance - not guaranteed values.

25 HP 3 PH 60 HZ 1775 RPM 460 V 4050M

TORQUES (LB-FT): PO=232 PU=116 LR=133 LRA=192



12/22/2025 ACPERF, record # 86830



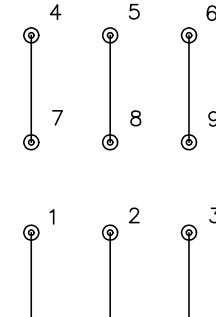
CD0005



LOW VOLTAGE
(2Y)



HIGH VOLTAGE
(1Y)



NOTES:

1. INTERCHANGE ANY TWO LINE LEADS TO REVERSE ROTATION.
2. OPTIONAL THERMOSTATS ARE PROVIDED WHEN SPECIFIED.
3. ACTUAL NUMBER OF INTERNAL PARALLEL CIRCUITS MAY BE A MULTIPLE OF THOSE SHOWN ABOVE.
4. LEAD COLORS ARE OPTIONAL. LEADS MUST ALWAYS BE NUMBERED AS SHOWN.

CD0005

REV. DESC: REVISE TO SHOW OPTIONAL COLORS			
REV. LTR: E	BY: JLP	REVISED: 01/19/99 10:15	TDR: 0171435
S00000		FILE: AAA00005140	MDL: -
		MTL: -	

BALDOR ELECTRIC Co.

3PH, DV, 9 LEADS