

BALDOR • RELIANCE

Customer information packet

EJPM4104T

30HP, 1770RPM, 3PH, 60HZ, 286JP, 1056M, TEFC, F

Class - None

Division - Not Applicable

Specifications

| | |
|--------------------------------|--|
| Enclosure | TEFC |
| Frame | 286JP |
| Frame Material | Iron |
| Frequency | 60.00 Hz |
| Haz Area Class and Group | None |
| Haz Area Division | Not Applicable |
| Motor Letter Type | Three Phase |
| Output @ Frequency | 30.000 HP @ 60 HZ |
| Phase | 3 |
| Synchronous Speed @ Frequency | 1800 RPM @ 60 HZ |
| Voltage @ Frequency | 460.0 V @ 60 HZ 230.0 V @ 60 HZ |
| Agency Approvals | CSA CSA EEV UR |
| Ambient Temperature | 40 °C |
| Auxiliary Box | NO AUXILLARY BOX |
| Auxiliary Box Lead Termination | None |
| Base Indicator | Rigid |
| Bearing Grease Type | Polyrex EM (-20F +300F) |
| Blower | None |
| Current @ Voltage | 72.000 A @ 230.0 V 76.000 A @ 208.0 V 36.000 A @ 460.0 V |
| Design Code | A |
| Drip Cover | No Drip Cover |
| Duty Rating | CONT |
| Efficiency @ 100% Load | 93.6 % |
| Electrically Isolated Bearing | Not Electrically Isolated |
| Feedback Device | NO FEEDBACK |
| Front Face Code | Standard |
| Front Shaft Indicator | None |

Part detail

| | |
|--------------|------------|
| Revision | AA |
| Type | AC |
| Mech. spec. | 10E381 |
| Base | |
| Status | PRD/A |
| Elec. spec. | 10WGY758 |
| Layout | 10LYE381 |
| Eff. date | 06-27-2024 |
| CD Diagram | CD0005 |
| Poles | 04 |
| Leads | 9#10 |
| Proprietary | False |
| Created date | 04-29-2010 |

| | |
|-------------------------------|-----------------------|
| Heater Indicator | No Heater |
| High Voltage Full Load Amps | 36.0 a |
| Insulation Class | F |
| Inverter Code | Inverter Ready |
| KVA Code | G |
| Lifting Lugs | Standard Lifting Lugs |
| Locked Bearing Indicator | Locked Bearing |
| Motor Lead Exit | Ko Box |
| Motor Lead Quantity/Wire Size | 9 @ 10 AWG |
| Motor Lead Termination | Flying Leads |
| Motor Standards | NEMA |
| Motor Type | 1056M |
| Mounting Arrangement | F1 |
| Number of Poles | 4 |
| Overall Length | 31.51 IN |
| Power Factor | 83 |
| Product Family | General Purpose |
| Pulley End Bearing Type | Ball |
| Pulley Face Code | C-Face |
| Pulley Shaft Indicator | Pump Coupling Shaft |
| Rodent Screen | None |
| Service Factor | 1.15 |
| Shaft Diameter | 1.250 IN |
| Shaft Extension Location | Pulley End |
| Shaft Ground Indicator | No Shaft Grounding |
| Shaft Rotation | Reversible |
| Shaft Slinger Indicator | Shaft Slinger |
| Speed | 1770 rpm |
| Speed Code | Single Speed |
| Starting Method | Direct on line |
| Thermal Device - Bearing | NONE (OLD) |
| Thermal Device - Winding | None |
| Vibration Sensor Indicator | No Vibration Sensor |
| Winding Thermal 1 | None |

Winding Thermal 2

None

Nameplate

NP3443LUA

| | | | | | | | |
|------------------|---------------------------|--------------------------------|-------|-----------------------------------|------------|----------------|-------------|
| CAT.NO. | EJPM4104T | CUST. P/N | | | | ENCL | TEFC |
| SPEC. | 10E381Y758G1 | CC | 010A | FRAME | 286JP | SER.NO. | |
| HP | 30 | CLASS | F | HZ | 60 | | |
| R.P.M. | 1770 | PH. | 3 | DES. | A | | |
| VOLTS | 230/460 | CODE | G | ODE BRG | 6309 | DE BRG | 6312 |
| AMPS | 72/36 | | | | | | |
| RATING | 40C AMB-CONT | NEMA NOM. EFF. | 93.6 | GREASE | POLYREX EM | | |
| P.F. | 83 | SER.F. | 1.15 | CT6-60H(10:1)VT3-60H(20:1) | | | |
| USABLE AT | 50HZ 30HP 190/380V 88/44A | | SF1.0 | | | | |
| VOLTS | AMPS | MAX. SPACE HEATER TEMP. | | | | | |

AC Induction Motor Performance Data

Record # 30986

Typical performance - not guaranteed values

| Winding: 10WGY758-R001 | | Type: 1056M | | Enclosure: TEFC | |
|------------------------|-------------------|--------------|--|-----------------|-------------------------|
| Nameplate Data | | | 460 V, 60 Hz: High Voltage Connection | | |
| Rated Output (HP) | | 30 | Full Load Torque | | 89.1 LB-FT |
| Volts | | 230/460 | Start Configuration | | direct on line |
| Full Load Amps | | 72/36 | Breakdown Torque | | 270 LB-FT |
| R.P.M. | | 1770 | Pull-up Torque | | 128 LB-FT |
| Hz | 60 Phase | 3 | Locked-rotor Torque | | 145 LB-FT |
| NEMA Design Code | B KVA Code | G | Starting Current | | 235 A |
| Service Factor (S.F.) | | 1.15 | No-load Current | | 15.9 A |
| NEMA Nom. Eff. | 93.6 Power Factor | 83 | Line-line Res. @ 25°C | | 0.226 Ω |
| Rating - Duty | | 40C AMB-CONT | Temp. Rise @ Rated Load | | 57°C |
| S.F. Amps | | | Temp. Rise @ S.F. Load | | 70°C |
| | | | Locked-rotor Power Factor | | 32 |
| | | | Rotor inertia | | 4.45 LB-FT ² |

Load Characteristics 460 V, 60 Hz, 30 HP

| % of Rated Load | 25 | 50 | 75 | 100 | 125 | 150 | S.F. |
|-----------------|------|------|------|------|------|------|------|
| Power Factor | 44 | 66 | 75 | 83 | 83 | 83 | 83 |
| Efficiency | 90.6 | 93.7 | 94.3 | 94 | 93.2 | 93 | 93.6 |
| Speed | 1794 | 1787 | 1781 | 1774 | 1766 | 1757 | 1769 |
| Line amperes | 17.9 | 23 | 30.1 | 36.2 | 45.3 | 54.5 | 41.7 |

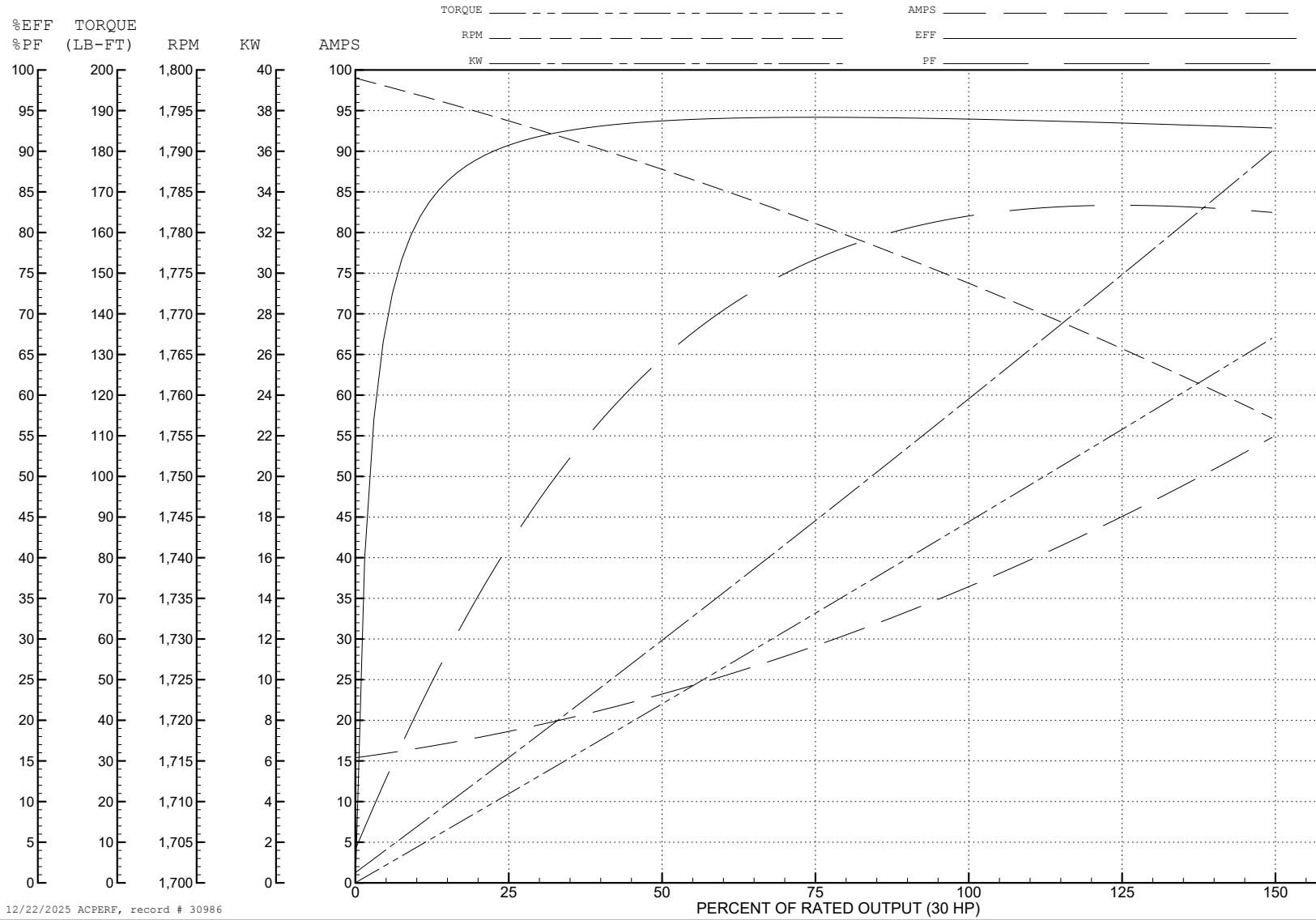
ABB Motors and Mechanical Inc.

WINDING # 10WGY758

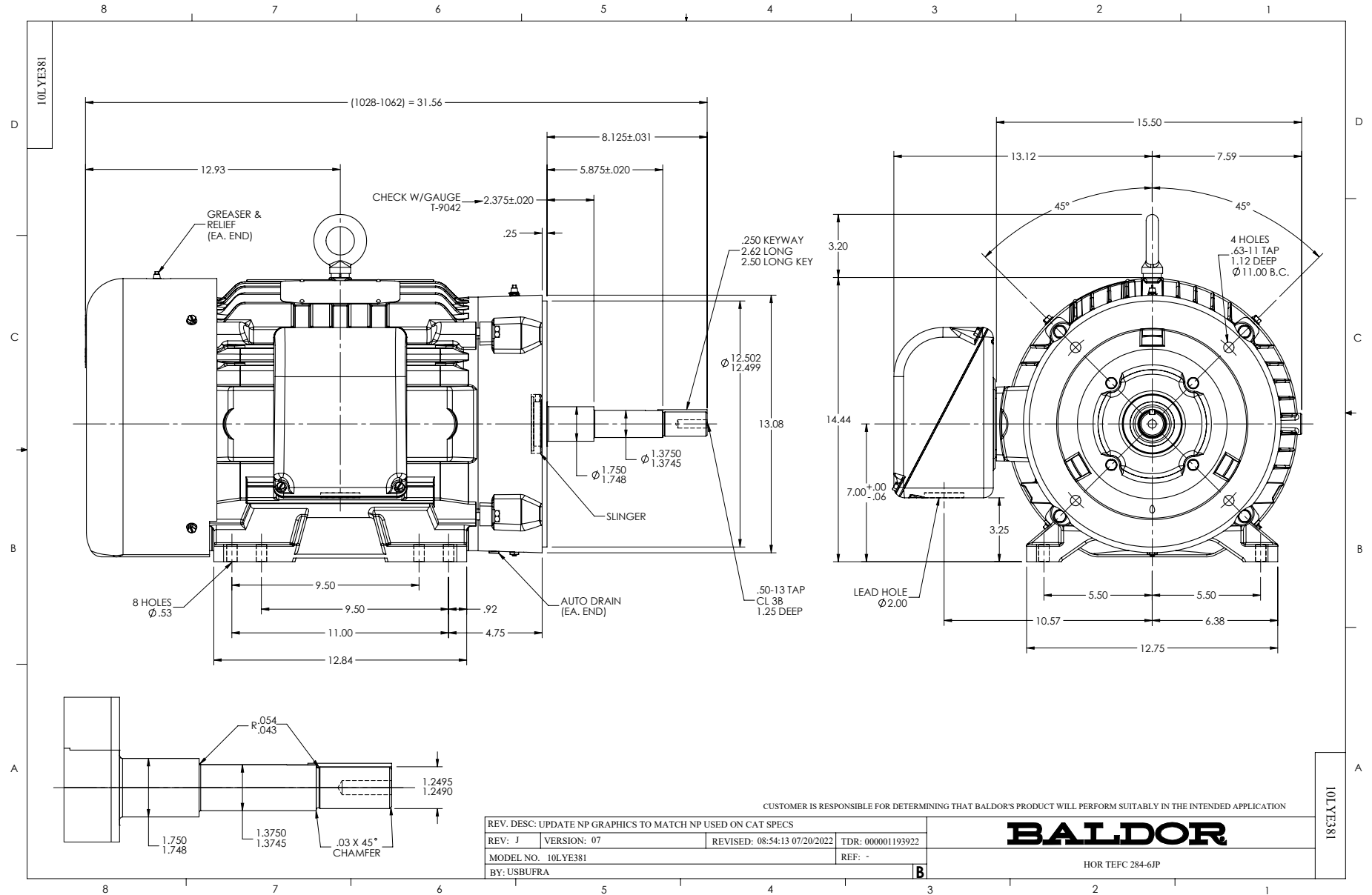
Typical performance - not guaranteed values.

30 HP 3 PH 60 HZ 1770 RPM 460 V 1056M

TORQUES (LB-FT): PO=270 PU=128 LR=145 LRA=235



12/22/2025 ACPERF, record # 30986



CD0005



LOW VOLTAGE
(2Y)



LINE

HIGH VOLTAGE
(1Y)



LINE

NOTES:

1. INTERCHANGE ANY TWO LINE LEADS TO REVERSE ROTATION.
2. OPTIONAL THERMOSTATS ARE PROVIDED WHEN SPECIFIED.
3. ACTUAL NUMBER OF INTERNAL PARALLEL CIRCUITS MAY BE A MULTIPLE OF THOSE SHOWN ABOVE.
4. LEAD COLORS ARE OPTIONAL. LEADS MUST ALWAYS BE NUMBERED AS SHOWN.

CD0005

| | | | |
|---|---------|-------------------------|--------------|
| REV. DESC: REVISE TO SHOW OPTIONAL COLORS | | | |
| REV. LTR: E | BY: JLP | REVISED: 01/19/99 10:15 | TDR: 0171435 |
| S00000 | | FILE: AAA00005140 | MDL: - |
| | | MTL: - | |

BALDOR ELECTRIC Co.

3PH, DV, 9 LEADS