



Customer information packet

CEM2511T-G

10HP, 1180RPM, 3PH, 60HZ, 256TC, OPSB, F1

Class - None

Division - Not Applicable

Specifications

Enclosure	OPSB
Frame	256TC
Frame Material	Steel
Frequency	60.00 Hz
Haz Area Class and Group	None
Haz Area Division	Not Applicable
Motor Letter Type	Three Phase
Output @ Frequency	10.000 HP @ 60 HZ
Phase	3
Synchronous Speed @ Frequency	1200 RPM @ 60 HZ
Voltage @ Frequency	230.0 V @ 60 HZ 460.0 V @ 60 HZ
Agency Approvals	CSA CSA EEV NEMA PREMIUM UR
Ambient Temperature	40 °C
Auxiliary Box	NO AUXILLARY BOX
Auxiliary Box Lead Termination	None
Base Indicator	Rigid
Bearing Grease Type	Polyrex EM (-20F +300F)
Blower	None
Current @ Voltage	28.600 A @ 230.0 V 14.300 A @ 460.0 V
Design Code	A
Drip Cover	No Drip Cover
Duty Rating	CONT
Efficiency @ 100% Load	91.7 %
Electrically Isolated Bearing	Not Electrically Isolated
Feedback Device	NO FEEDBACK
Heater Indicator	No Heater
High Voltage Full Load Amps	14.3 a

Part detail

Revision	H
Type	AC
Mech. spec.	
Base	
Status	PRD/A
Elec. spec.	39WGW950
Layout	39LYE477
Eff. date	06-11-2024
CD Diagram	CD0180
Poles	06
Leads	9#12
Proprietary	False
Created date	02-20-2020

Insulation Class	H
Inverter Code	Inverter Duty
IP Rating	NONE
KVA Code	J
Lifting Lugs	Standard Lifting Lugs
Locked Bearing Indicator	Locked Bearing
Motor Lead Termination	Flying Leads
Motor Standards	NEMA
Motor Type	3954M
Mounting Arrangement	F1
Number of Poles	6
Overall Length	23.19 IN
Power Factor	71
Product Family	General Purpose
Pulley Face Code	C-Face
Rodent Screen	None
Service Factor	1.15
Shaft Diameter	1.625 IN
Shaft Ground Indicator	Shaft Grounding
Shaft Rotation	Reversible
Speed	1180 rpm
Speed Code	Single Speed
Starting Method	Direct on line
Thermal Device - Bearing	None
Thermal Device - Winding	None
Vibration Sensor Indicator	No Vibration Sensor
Winding Thermal 1	None
Winding Thermal 2	None

Nameplate

NP3553LUA									
CAT.NO.	CEM2511T-G								
SPEC.	39-0000-0267								
HP	10								
VOLTS	230/460								
AMPS	28.6/14.3								
RPM	1180								
FRAME	256TC	HZ	60	PH	3				
SF	1.15	CODE	J	DES	A	CLASS	H		
NEMA NOM. EFF	91.7	PF	71						
RATING	40C AMB-CONT								
CC	010A								
ENCL	OPSB	SN							
DE	6309	ODE	6208						
VPWM INVERTER READY									
CT30-60(2:1) VT3-60(20:1)									
USABLE AT	50HZ 10HP 190/380V 33.4/16.7A							SF1.0	

AC Induction Motor Performance Data

Record # 36294

Typical performance - not guaranteed values

Winding: 39WGW950-R004		Type: 3954M	Enclosure: OPSB
Nameplate Data		460 V, 60 Hz: High Voltage Connection	
Rated Output (HP)	10	Full Load Torque	44.1 LB-FT
Volts	230/460	Start Configuration	direct on line
Full Load Amps	28.6/14.3	Breakdown Torque	149 LB-FT
R.P.M.	1180	Pull-up Torque	55.5 LB-FT
Hz	60 Phase	Locked-rotor Torque	67.6 LB-FT
NEMA Design Code	A KVA Code	Starting Current	91.6 A
Service Factor (S.F.)	1.15	No-load Current	7.51 A
NEMA Nom. Eff.	91.7 Power Factor	Line-line Res. @ 25°C	0.72568 Ω
Rating - Duty	40C AMB-CONT	Temp. Rise @ Rated Load	18°C
S.F. Amps		Temp. Rise @ S.F. Load	22°C
		Locked-rotor Power Factor	25.9
		Rotor inertia	4.34 LB-FT ²

Load Characteristics 460 V, 60 Hz, 10 HP

% of Rated Load	25	50	75	100	125	150	S.F.
Power Factor	34	53	64	70	73	74	72
Efficiency	84.5	90.2	91.8	92.1	91.8	91.1	91.9
Speed	1195.9	1191.9	1187.8	1182.8	1177.7	1171.6	1180
Line amperes	8.2	9.72	11.9	14.4	17.5	20.6	16.3

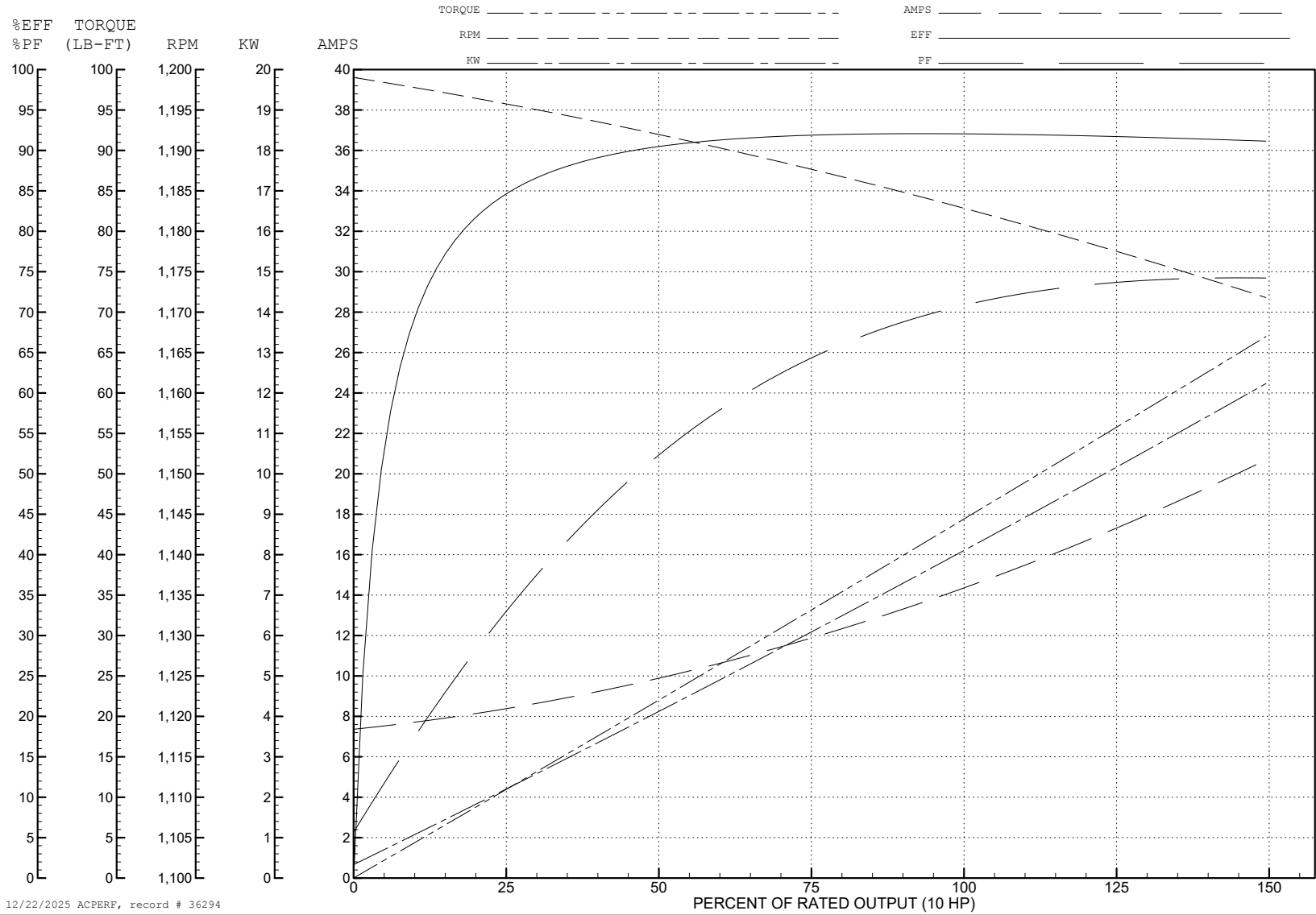
ABB Motors and Mechanical Inc.

WINDING # 39WGW950

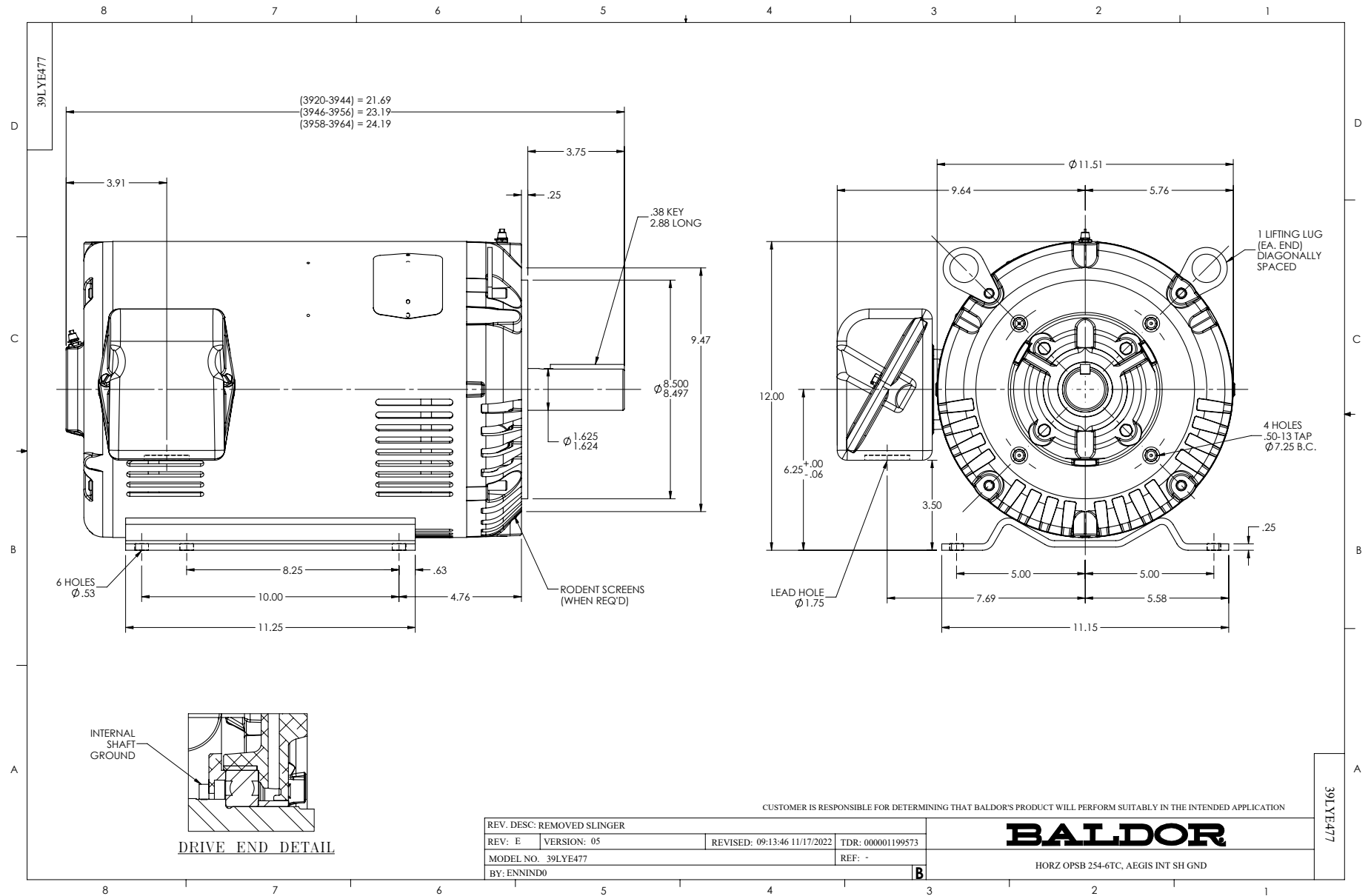
Typical performance - not guaranteed values.

10 HP 3 PH 60 HZ 1180 RPM 460 V 3954M

TORQUES (LB-FT): PO=149 PU=55.5 LR=67.6 LRA=91.6



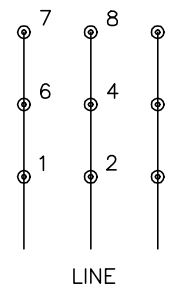
12/22/2025 ACPERF, record # 36294



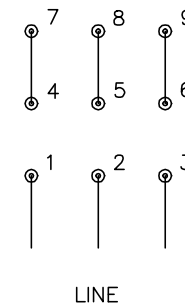
CD0180



LOW VOLTAGE
(2D)



HIGH VOLTAGE
(1D)



NOTES:

1. INTERCHANGE ANY TWO LINE LEADS TO REVERSE ROTATION.
2. OPTIONAL THERMOSTATS ARE PROVIDED WHEN SPECIFIED.
3. ACTUAL NUMBER OF INTERNAL PARALLEL CIRCUITS MAY BE A MULTIPLE OF THOSE SHOWN ABOVE.
4. LEAD COLORS ARE OPTIONAL. LEADS MUST ALWAYS BE NUMBERED AS SHOWN.

CD0180

REV. DESC: ADD CLASS CONN00000007		
REV. LTR: D	VERSION: 01	TDR: 000001099922
FILE: \AAA\00005\148	REVISED: 10: 25: 29 02/19/2019	BY: ENBRIRO
MTL: -	© □	

BALDOR - RELIANCE®

3PH, DV, 9 LEADS, DELTA CONNECTION

SH 1 of 1