

**BALDOR • RELIANCE**

---

# Customer information packet

## CDRX32424T-5

40HP, 3540RPM, 3PH, 60HZ, 324TSC, XPFC, F1

Class - CLI GP C,D

Division - Division I

Copyright © All product information within this document is subject to ABB Motors and Mechanical Inc. copyright © protection, unless otherwise noted.

12/23/2025 12:38:00 AM

## Specifications

Enclosure	XPFC
Frame	324TSC
Frame Material	Iron
Frequency	60.00 Hz
Haz Area Class and Group	CLI GP C,D
Haz Area Division	Division I
Motor Letter Type	Three Phase
Output @ Frequency	40.000 HP @ 60 HZ
Phase	3
Synchronous Speed @ Frequency	3600 RPM @ 60 HZ
Voltage @ Frequency	575.0 V @ 60 HZ
Agency Approvals	CSA EEV UL
Ambient Temperature	40 °C
Auxiliary Box	NO AUXILLARY BOX
Auxiliary Box Lead Termination	None
Base Indicator	Rigid
Bearing Grease Type	Polyrex EM (-20F +300F)
Blower	None
Constant Torque Speed Range	6
Current @ Voltage	36.000 A @ 575.0 V
Design Code	A
Drip Cover	No Drip Cover
Duty Rating	CONT
Efficiency @ 100% Load	92.4 %
Electrically Isolated Bearing	Not Electrically Isolated
Feedback Device	NO FEEDBACK
Haz Area Temp Code	T3C
Heater Indicator	No Heater
High Voltage Full Load Amps	36.0 a
Insulation Class	F
Inverter Code	Inverter Duty

## Part detail

Revision	E
Type	AC
Mech. spec.	
Base	
Status	PRD/A
Elec. spec.	12WGY734
Layout	12LYH659
Eff. date	12-10-2024
CD Diagram	CD0006
Poles	02
Leads	3#10
Proprietary	False
Created date	07-24-2019

<b>IP Rating</b>	NONE
<b>KVA Code</b>	H
<b>Lifting Lugs</b>	Standard Lifting Lugs
<b>Locked Bearing Indicator</b>	Locked Bearing
<b>Max Speed</b>	5400 rpm
<b>Motor Lead Termination</b>	Flying Leads
<b>Motor Standards</b>	NEMA
<b>Motor Type</b>	1252M
<b>Mounting Arrangement</b>	F1
<b>Number of Poles</b>	2
<b>Overall Length</b>	30.50 IN
<b>Power Factor</b>	88
<b>Product Family</b>	Hazardous Location Motor
<b>Pulley Face Code</b>	C-Face
<b>Rodent Screen</b>	None
<b>RoHS Status</b>	ROHS NON-COMPLIANT
<b>Service Factor</b>	1.00
<b>Shaft Diameter</b>	1.875 IN
<b>Shaft Ground Indicator</b>	No Shaft Grounding
<b>Shaft Rotation</b>	Reversible
<b>Speed</b>	3540 rpm
<b>Speed Code</b>	Single Speed
<b>Starting Method</b>	Direct on line
<b>Thermal Device - Bearing</b>	None
<b>Thermal Device - Winding</b>	Normally Closed Thermostat
<b>Vibration Sensor Indicator</b>	No Vibration Sensor
<b>Winding Thermal 1</b>	None
<b>Winding Thermal 2</b>	None

**Nameplate**

**NP1401XPSLEV**

<b>NO.</b>		<b>CC</b>	010A				
<b>S/N</b>		<b>TEMP CODE</b>	T3C				
<b>SPEC.</b>	12-0000-0858	<b>INV.TYPE</b>	PWM				
<b>CAT.NO.</b>	CDRX32424T-5	<b>C HP FR</b>	60	<b>C HP TO</b>	90		
<b>HP</b>	40	<b>CT HZ FROM</b>	6	<b>CT HZ TO</b>	60		
<b>VOLTS</b>	575	<b>VT HZ FROM</b>	6	<b>VT HZ TO</b>	60		
<b>AMPS</b>	36	<b>MAG CUR</b>	9.1				
<b>RPM</b>	3540	<b>MX RPM</b>	5400				
<b>HZ</b>	60	<b>PH</b>	3	<b>CL</b>	F	<b>NOM.EFF.</b>	92.4
<b>SER.F.</b>	1.00	<b>DES</b>	A	<b>SL HZ</b>	1	<b>WK2</b>	4.07
<b>FRAME</b>	324TSC	<b>RATING</b>	40C AMB-CONT				
	55C AMB @ 1.0 SF, 60C RISE						
	1.15SF ON SINEWAVE			NEMA MG-1 PT.5,IP55			

**AC Induction Motor Performance Data**

Record # 77603

Typical performance - not guaranteed values

<b>Winding: 12WGY734-R002</b>		<b>Type: 1252M</b>		<b>Enclosure: XPFC</b>	
<b>Nameplate Data</b>			<b>575 V, 60 Hz: Single Voltage Motor</b>		
<b>Rated Output (HP)</b>	40	<b>Full Load Torque</b>	59.3 LB-FT		
<b>Volts</b>	575	<b>Start Configuration</b>	direct on line		
<b>Full Load Amps</b>	36	<b>Breakdown Torque</b>	244 LB-FT		
<b>R.P.M.</b>	3540	<b>Pull-up Torque</b>	83.5 LB-FT		
<b>Hz</b>	60 <b>Phase</b>	3	<b>Locked-rotor Torque</b>	115 LB-FT	
<b>NEMA Design Code</b>	A <b>KVA Code</b>	H	<b>Starting Current</b>	253 A	
<b>Service Factor (S.F.)</b>	1	<b>No-load Current</b>	9.06 A		
<b>NEMA Nom. Eff.</b>	92.4 <b>Power Factor</b>	88	<b>Line-line Res. @ 25°C</b>	0.197 Ω	
<b>Rating - Duty</b>	40C AMB-CONT		<b>Temp. Rise @ Rated Load</b>	59°C	
<b>S.F. Amps</b>			<b>Temp. Rise @ S.F. Load</b>	72°C	
			<b>Locked-rotor Power Factor</b>	20.7	
			<b>Rotor inertia</b>	4.07 LB-FT <sup>2</sup>	

**Load Characteristics 575 V, 60 Hz, 40 HP**

<b>% of Rated Load</b>	<b>25</b>	<b>50</b>	<b>75</b>	<b>100</b>	<b>125</b>	<b>150</b>
<b>Power Factor</b>	68	84	89	91	91	91
<b>Efficiency</b>	84.6	90.4	91.8	92.6	92	91.4
<b>Speed</b>	3587	3574	3560	3547	3532	3516
<b>Line amperes</b>	12.9	19.6	27.4	35.7	44.7	54

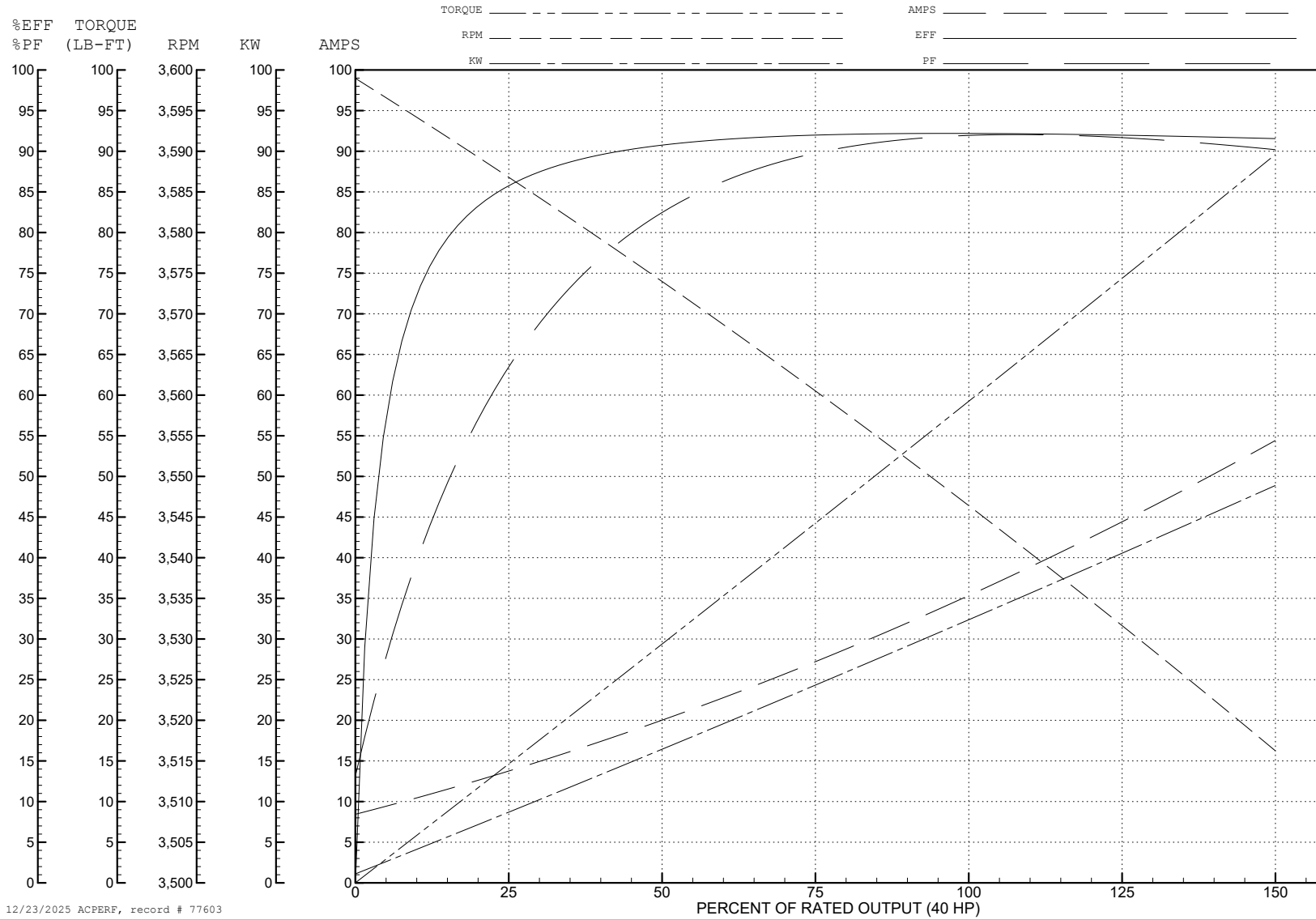
ABB Motors and Mechanical Inc.

WINDING # 12WGY734

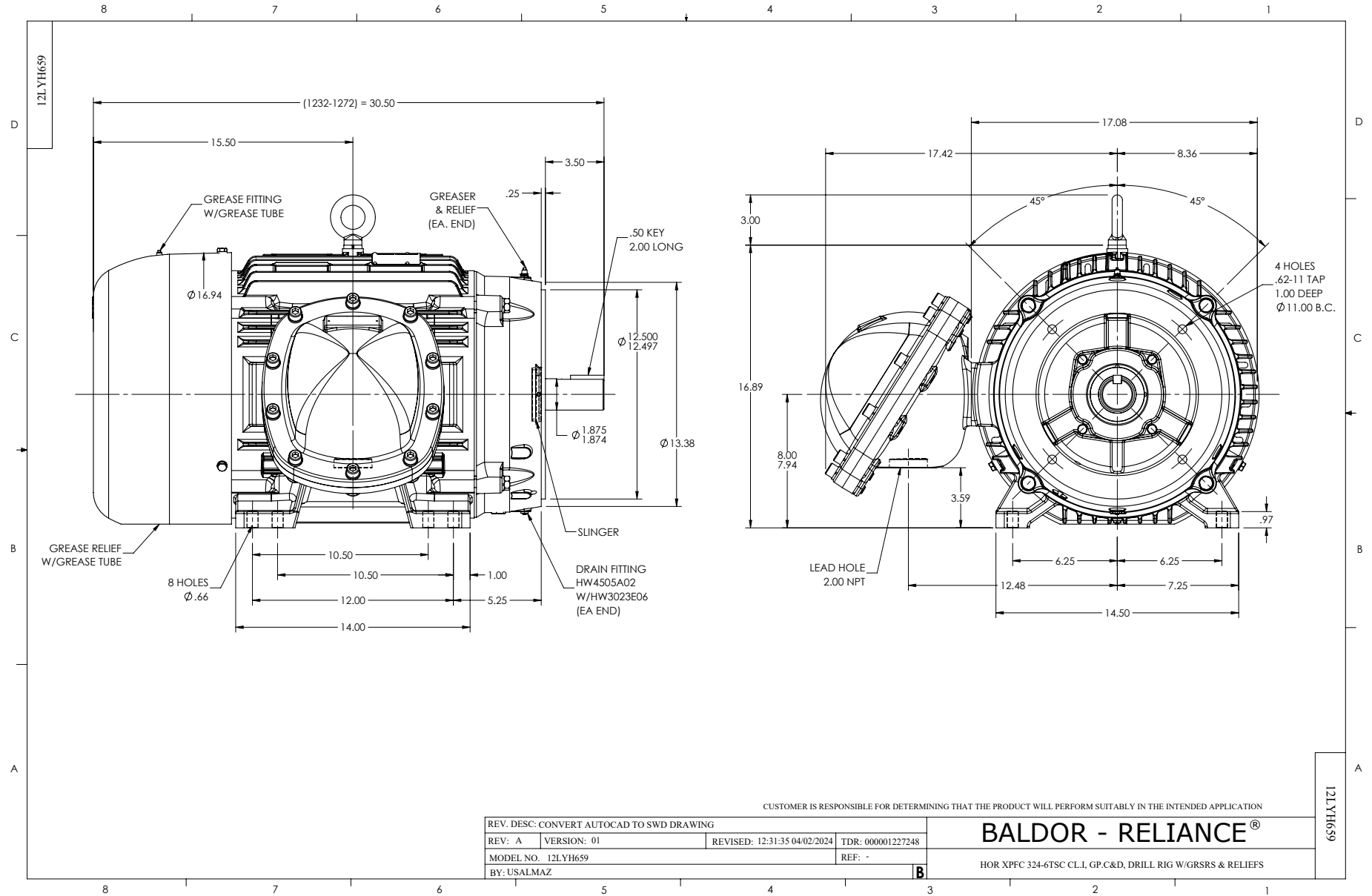
Typical performance - not guaranteed values.

40 HP 3 PH 60 HZ 3540 RPM 575 V 1252M

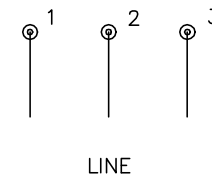
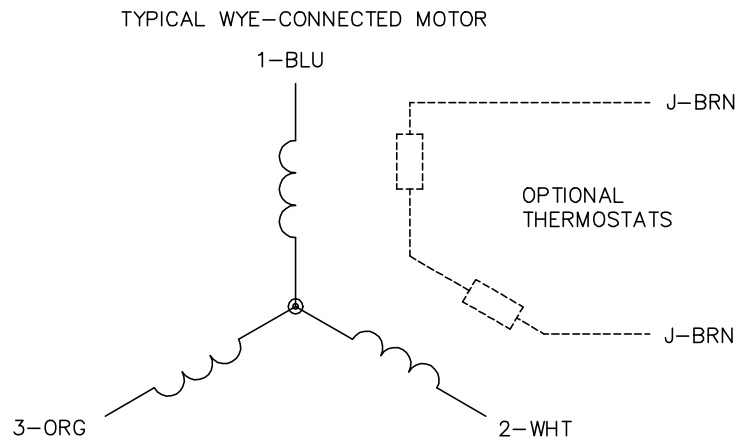
TORQUES (LB-FT): PO=244 PU=83.5 LR=115 LRA=253



12/23/2025 ACPERF, record # 77603



CD0006



NOTES:

1. THREE LEAD MOTOR MAY BE EITHER WYE CONNECTED OR DELTA CONNECTED.
2. INTERCHANGE ANY TWO LINE LEADS TO REVERSE ROTATION.
3. OPTIONAL THERMOSTATS ARE PROVIDED WHEN SPECIFIED.
4. ACTUAL NUMBER OF INTERNAL PARALLEL CIRCUITS MAY VARY.
5. LEAD COLORS ARE OPTIONAL. LEADS MUST BE NUMBERED AS SHOWN.

CD0006

REV. DESC: ADD CLASS CONN00000007		
REV. LTR: E	VERSION: 01	TDR: 000001099922
FILE: \AAA\00005\141	REVISED: 10:24:49 02/19/2019	BY: ENBRIRO
MTL: -		© □

**BALDOR - RELIANCE®**

3PH, SV, 3 LEADS, WYE OR DELTA CONNECTED

SH 1 of 1